

vide II 548, 516

Motetta 8 Voc. Altus Chori Inferioris

Handwritten musical notation on a five-line staff, beginning with a large initial 'P' and a clef. The notes are in a cursive style typical of 16th-century manuscripts.

Laudite Regna Throni

Handwritten musical notation on a five-line staff, continuing the melody from the previous line.

Alleluia redit Vita be

Handwritten musical notation on a five-line staff, continuing the melody.

ata pijs moritur mors in proba victor acci

Handwritten musical notation on a five-line staff, continuing the melody.

dit Inferni, palma tremenda,

Handwritten musical notation on a five-line staff, continuing the melody.

Je sus aeternas miseris mon

Handwritten musical notation on a five-line staff, continuing the melody.

strat adire Vias, adire Vias Jesu Victorum, nova

Handwritten musical notation on a five-line staff, continuing the melody.

gloria gloria pignus amoris

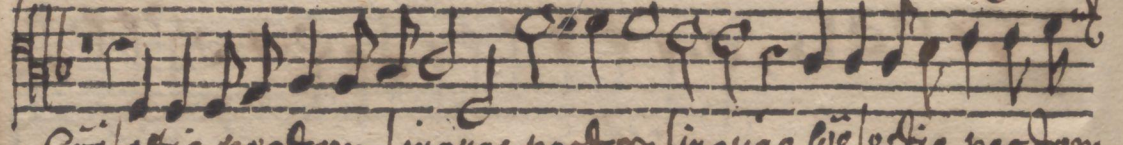
Handwritten musical notation on a five-line staff, concluding the piece with a double bar line.



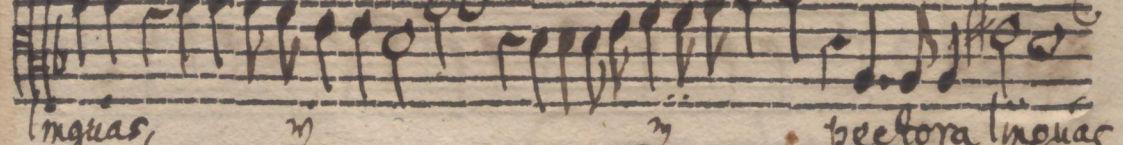
delitia mundi      te duce parata



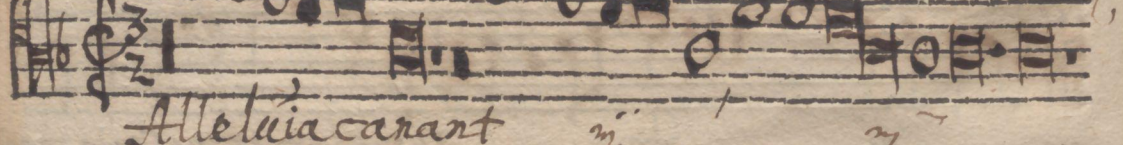
salus Unanimes solvant, Unanimes solvant



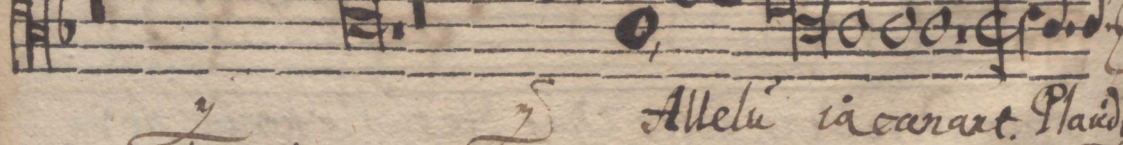
Coelestia pectora linguas, pectora linguas, coelestia pectora



linguas,      pectora linguas



Alleluia carant



Alleluia carant. Plaudite



te regnat tibi regnat tibi

