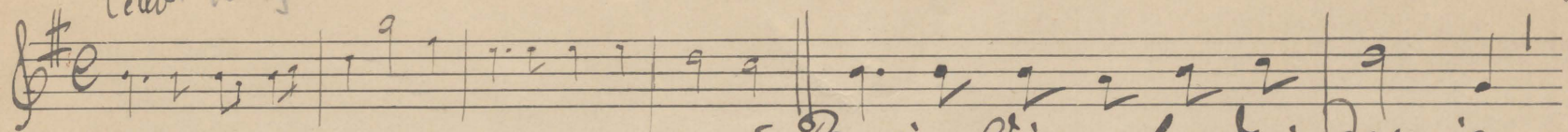


IV.8

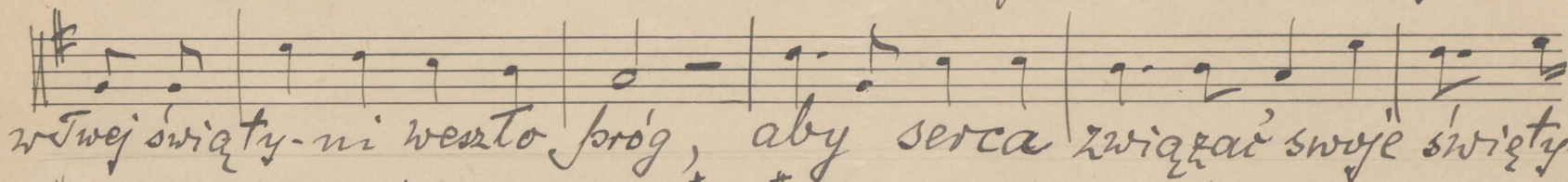
Pieśń do ślubu.

Z. Koszyński.

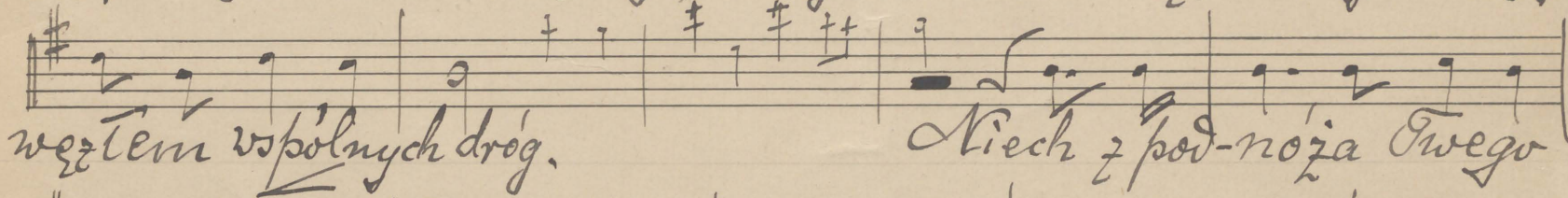
Celli 1049



Boże Ojcie ludzi dwoje

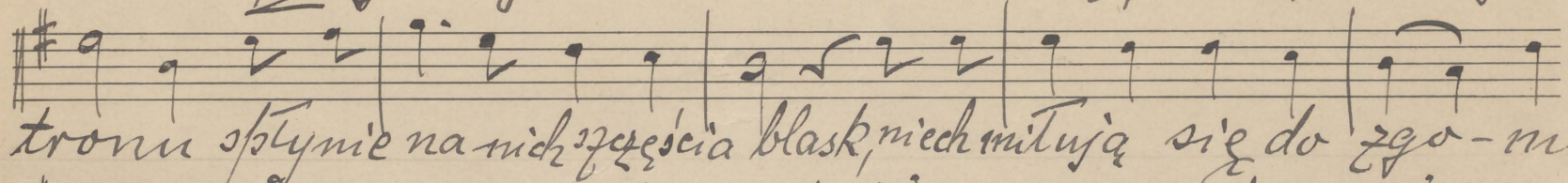


w Twojej świątyni wesoło próg, aby serca związać swoje świętym

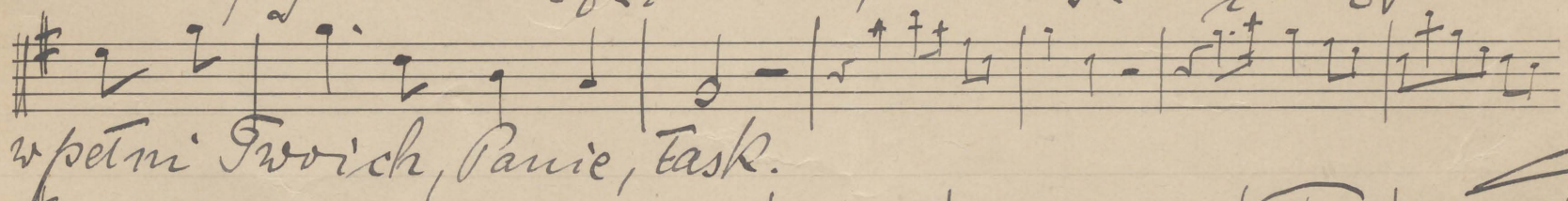


węzłem wspólnych dróg.

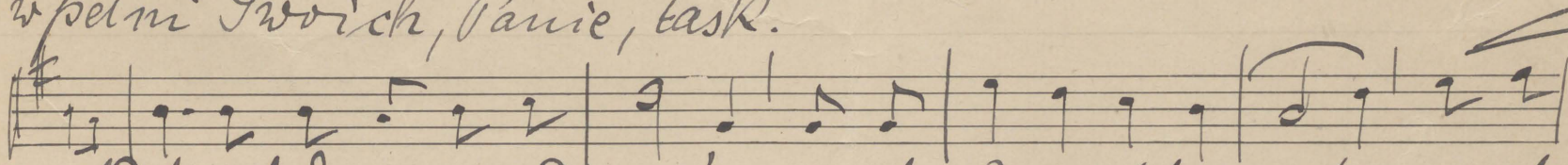
Niech z pod-nóża Twego



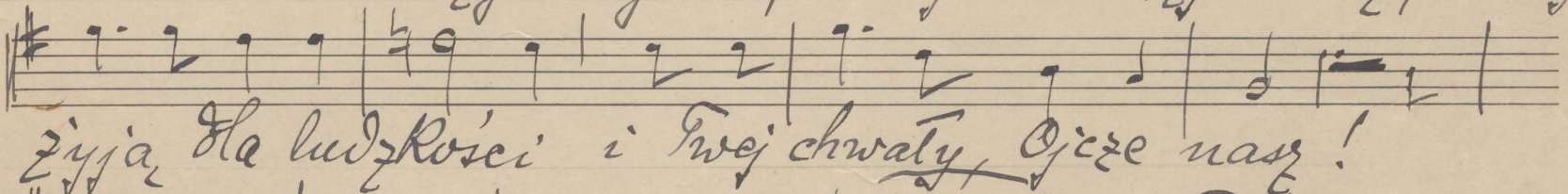
tronu spłynie na nich szczęścia blask, niech miłują się do zgo-mu



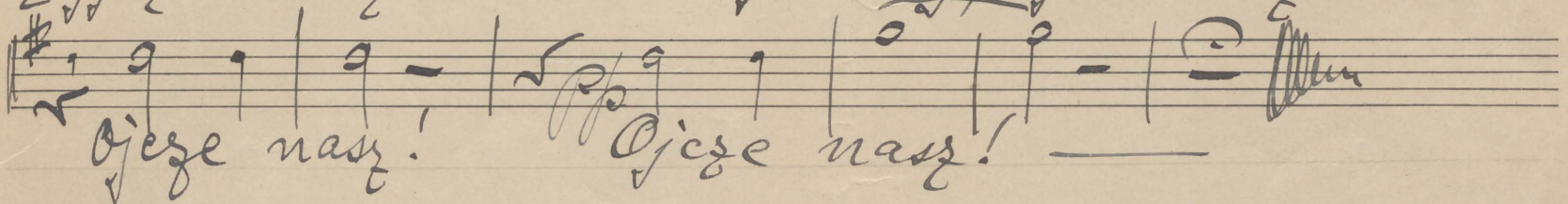
w pełni Twoich, Panie, łask.



Niech w ich domu zgoda gości, niechaj wierność trzyma straż, niechaj



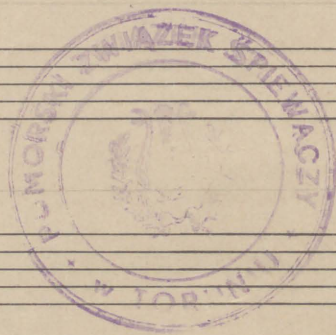
żyją dla ludzkości i Twojej chwały, Ojcie nasz!



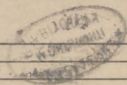
Ojcie nasz!

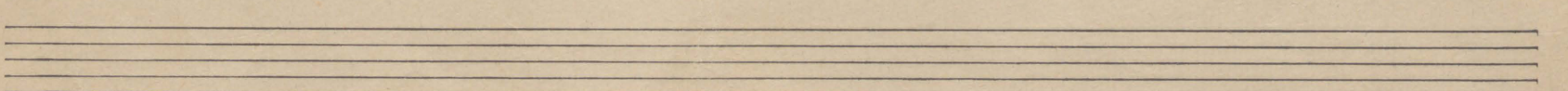
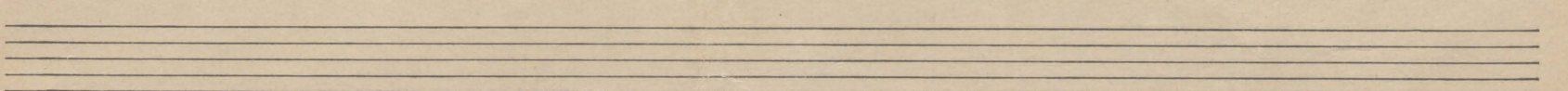
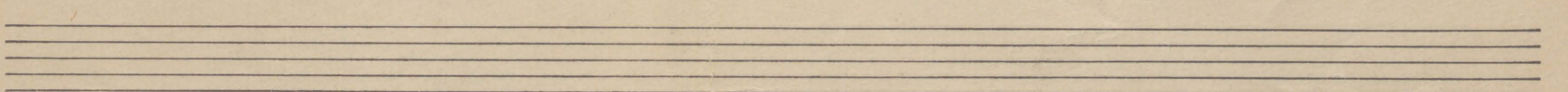
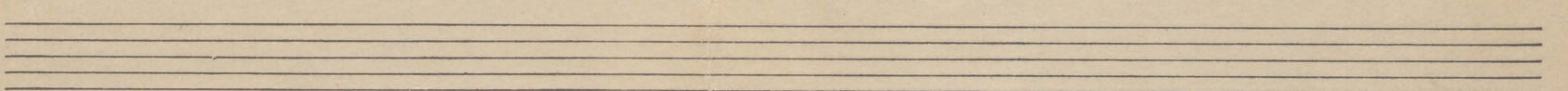
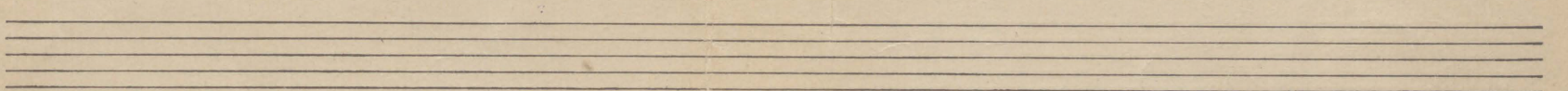
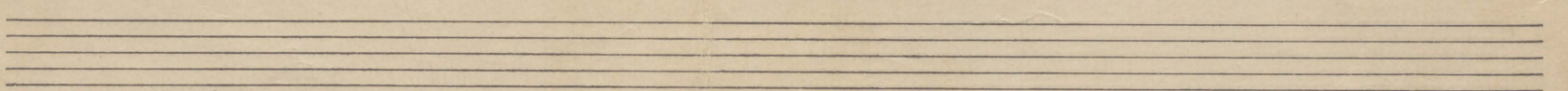
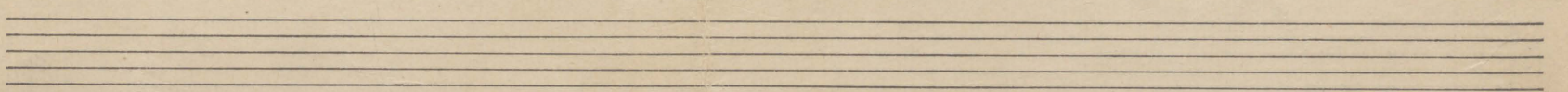
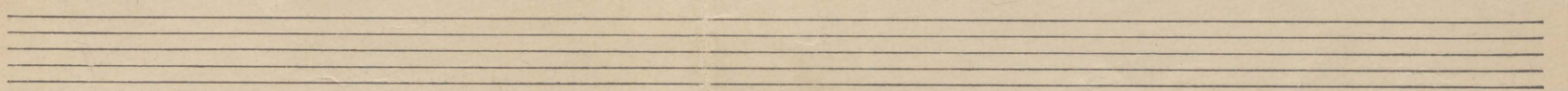
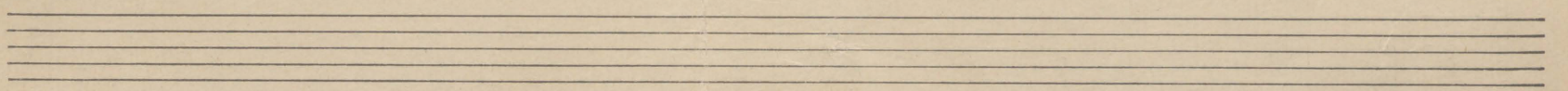
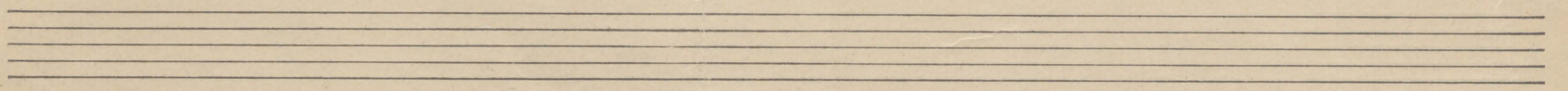
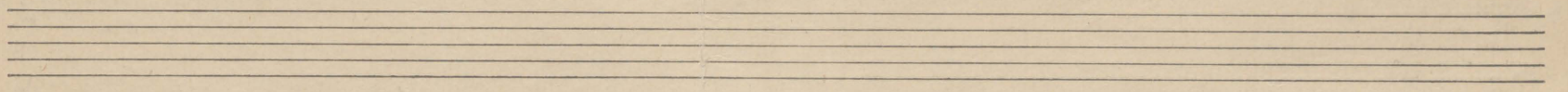
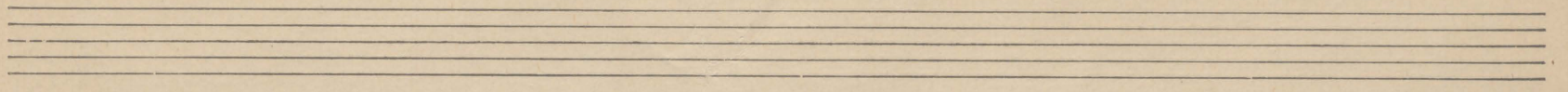
Ojcie nasz!

E 19



D. 68/2012





Skrypce I.

Pieśń o ślubu.

Z. Waryński.

Vlny

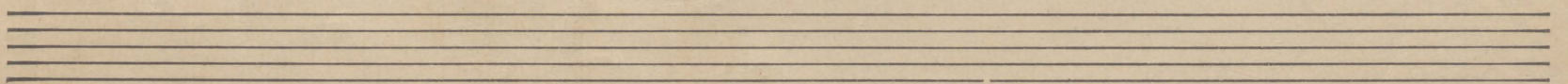
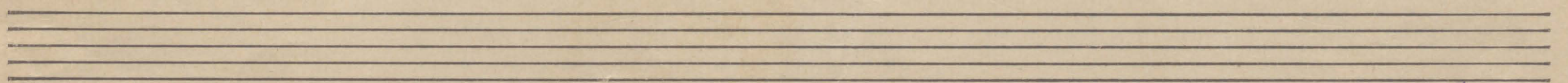
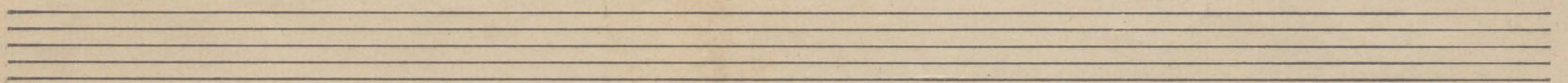
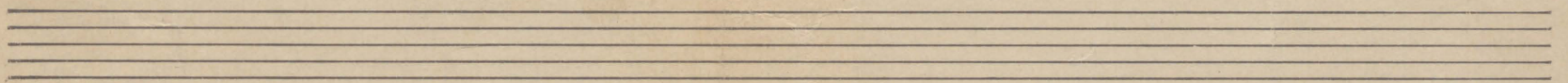
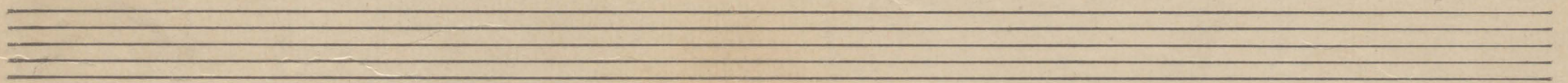
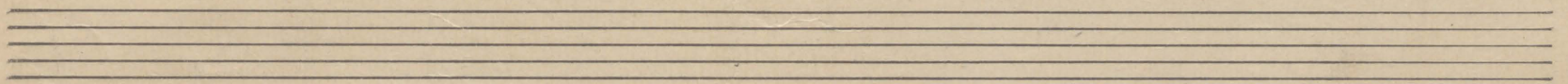
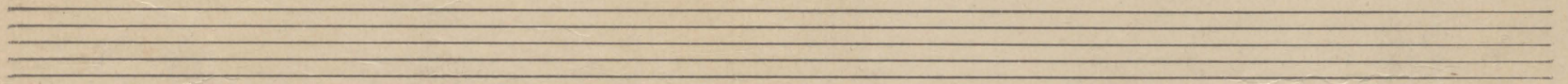
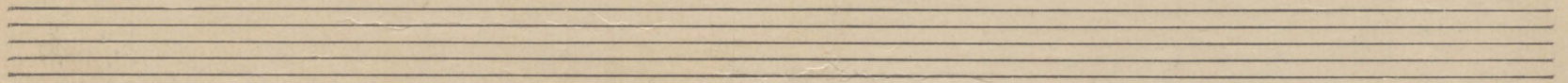
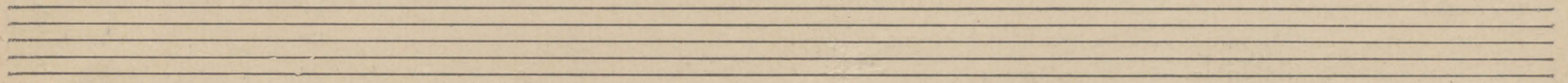
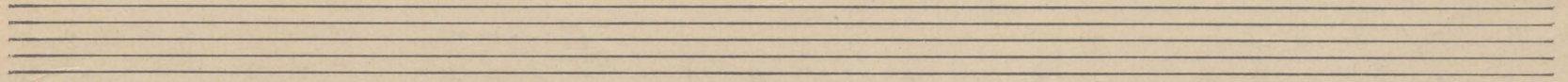
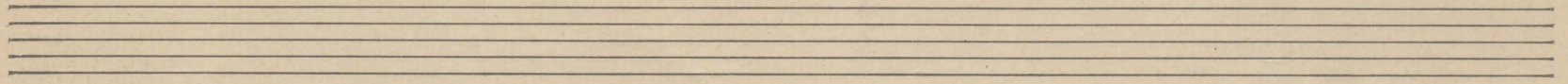
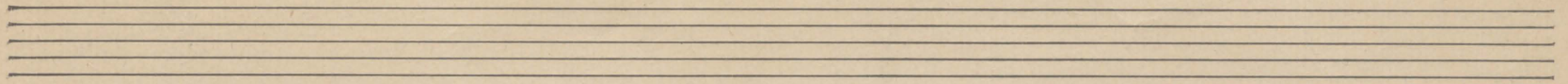
Handwritten musical score for Violin I, consisting of seven staves of music. The key signature is one sharp (F#) and the time signature is 2/4. The score includes various dynamics such as *pp*, *mf*, and *p*, and performance instructions like *pizz.* and *arco*. The music features a mix of eighth and sixteenth notes, with some rests and phrasing slurs.

E 19



D. 68/2092





Skrypcce II.

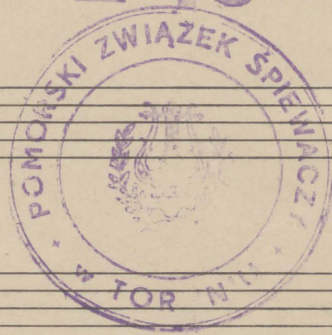
Pieśń do ślubu.

J. Wężycki

violin

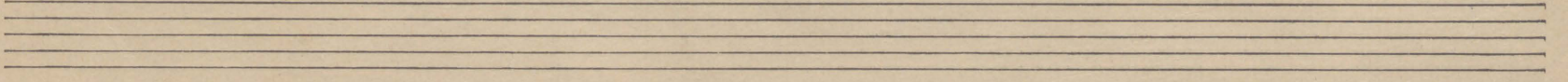
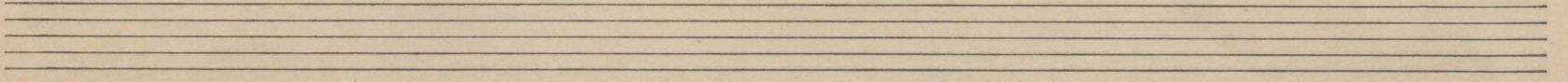
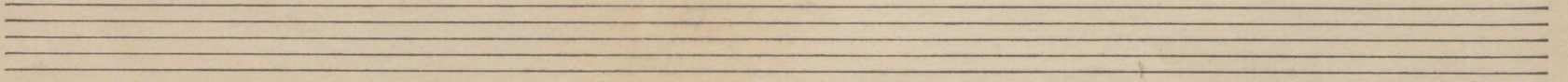
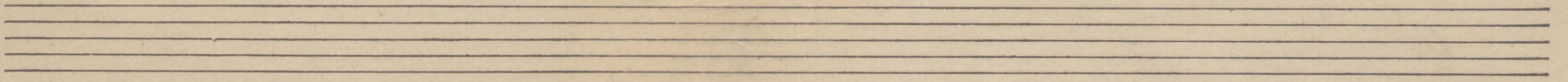
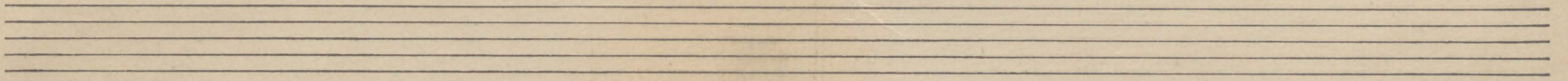
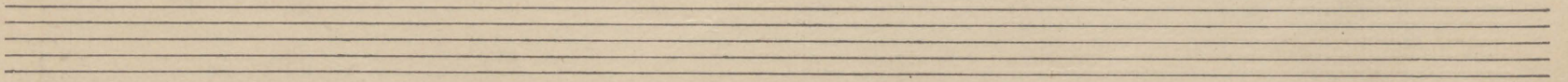
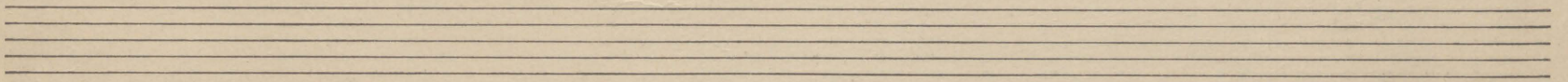
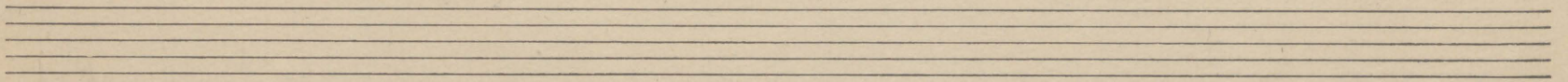
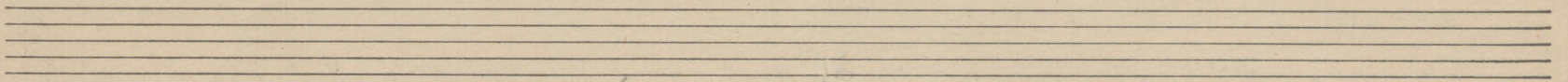
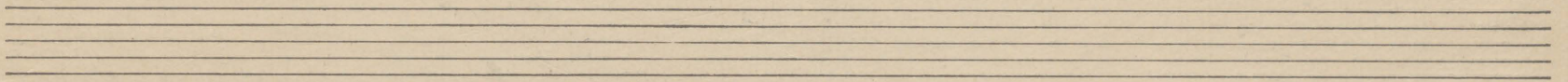
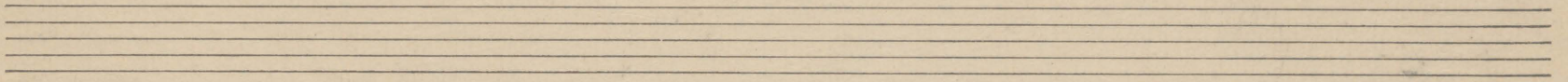
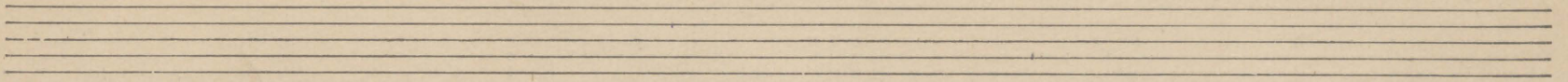
Handwritten musical score for Violin II, titled "Pieśń do ślubu" by J. Wężycki. The score is written on six staves in G major (one sharp) and 2/4 time. It includes dynamic markings such as *pp*, *pizz*, and *arco*. The notation features various rhythmic values, including eighth and sixteenth notes, and rests. The piece concludes with a double bar line and a fermata.

E 19



D.6812012





Wiolonczela

E 19

Pesni So sluku.

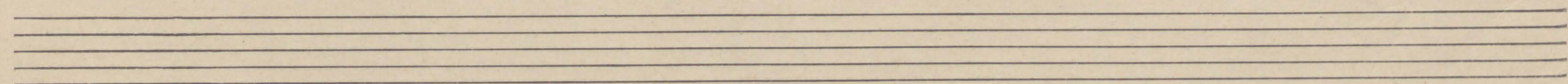
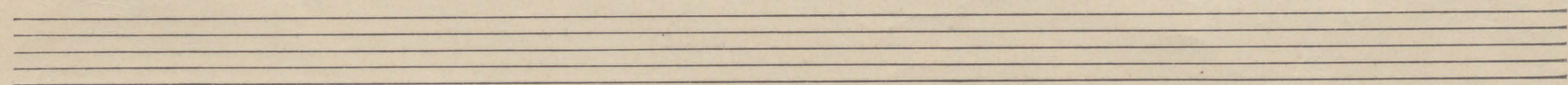
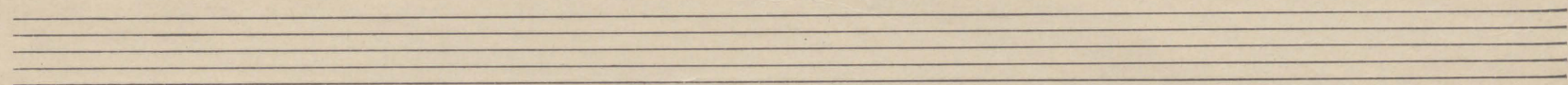
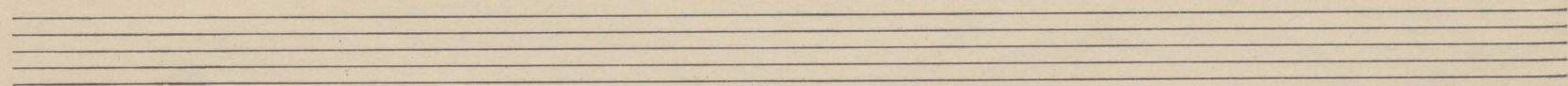
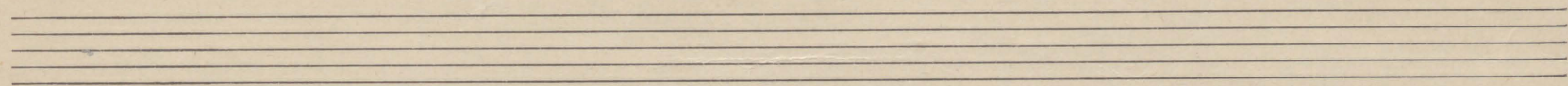
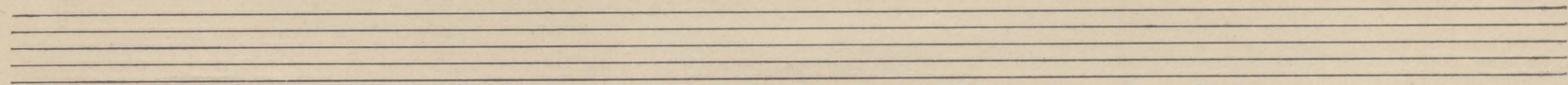
F. Moczyński.

VII 1049

TOR

D.6812012

BIBLIOTEKA
W TORUNIU
UNIWERSYTETU



Organy. Piesni Do Slubu.

Z. Moczyński.

E 19

11149

Handwritten musical notation for the first system, featuring a treble and bass clef with a key signature of one sharp (F#) and a common time signature (C). The notation includes various note values and rests.

Handwritten musical notation for the second system, including a "Viol." marking above the treble staff. The notation continues with notes and rests in the same key and time signature.

Handwritten musical notation for the third system, showing more complex rhythmic patterns and note groupings. The notation includes beams connecting notes and various rests.

Handwritten musical notation for the fourth system, continuing the piece with similar notation. The notation includes various note values and rests.

Handwritten musical notation for the fifth system, featuring a change in the treble clef. The notation includes various note values and rests.

Handwritten musical notation for the sixth system, concluding the piece. The notation includes various note values and rests.

N.S.



Handwritten musical notation on a page with eight staves. The first two staves contain a system of music with treble and bass clefs, a key signature of one sharp (F#), and a common time signature (C). The notation includes chords and melodic lines. The third and fourth staves contain another system of music, also with treble and bass clefs and a key signature of one sharp. This system concludes with a double bar line, a common time signature, and a final flourish. The remaining four staves are empty.