

Biblioteka
U. M. K.
Toruń

290

III

28

4

DONALD E. SUPER

THE BACKGROUND OF
POLISH-GERMAN RELATIONS
IN CHARTS AND FIGURES

THE ELLNER COMPANY
Publishers
New York

1932

PRICE \$1.00

DONALD E. SUPER

Exeter College
Oxford

THE BACKGROUND OF
POLISH-GERMAN RELATIONS
IN CHARTS AND FIGURES

THE ELLNER COMPANY

Publishers
New York

1932

COPYRIGHT 1932
By THE ELLNER COMPANY
Reproduction is permitted.



Gabinet Map¹
A-290-III



Scale of Miles

POLAND AND GERMANY

POPULATION :

Poland

32,000,000

Germany

65,000,000

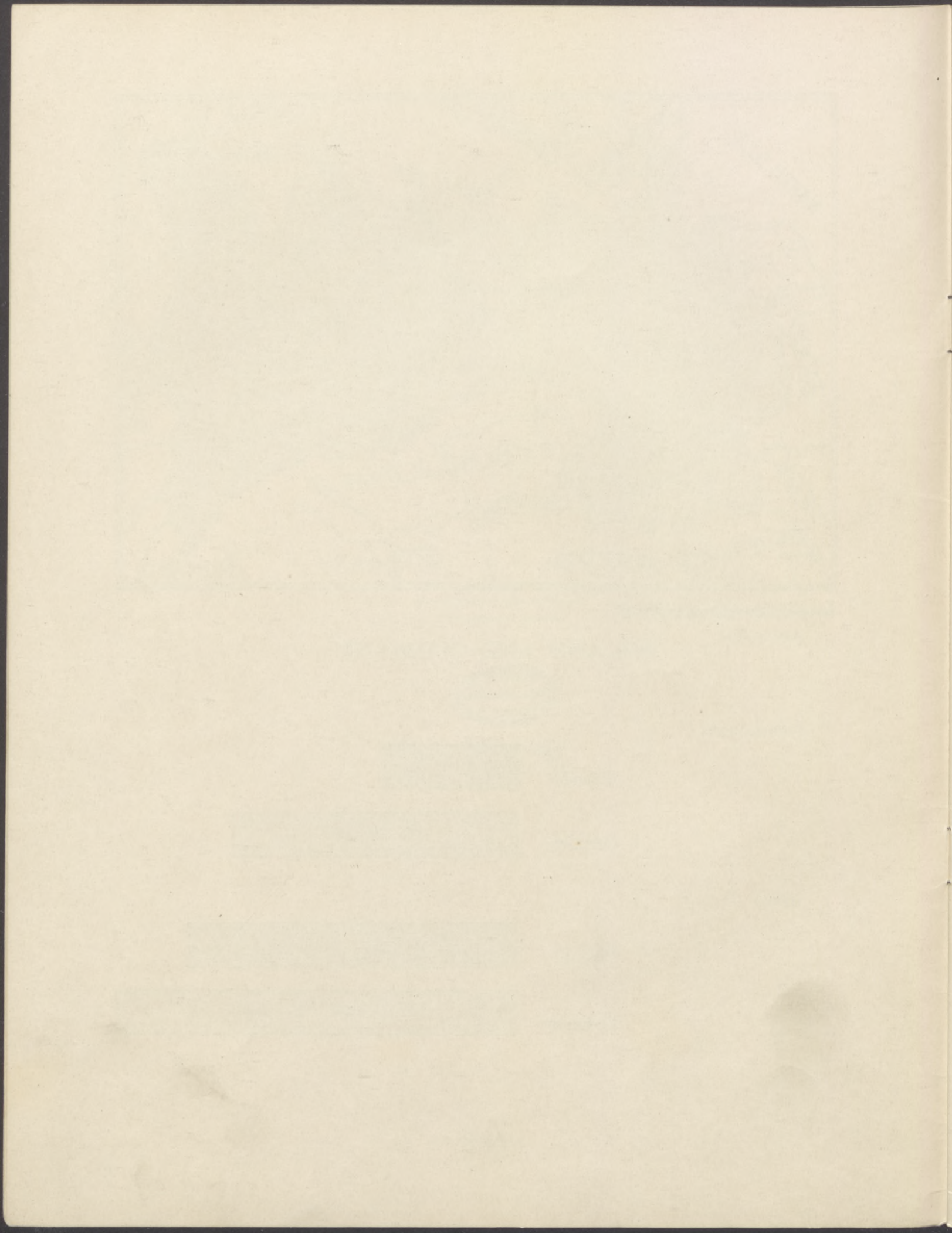
AREA :

Poland

150,000,000 Sq. Miles

Germany

182,000,000 Sq. Miles



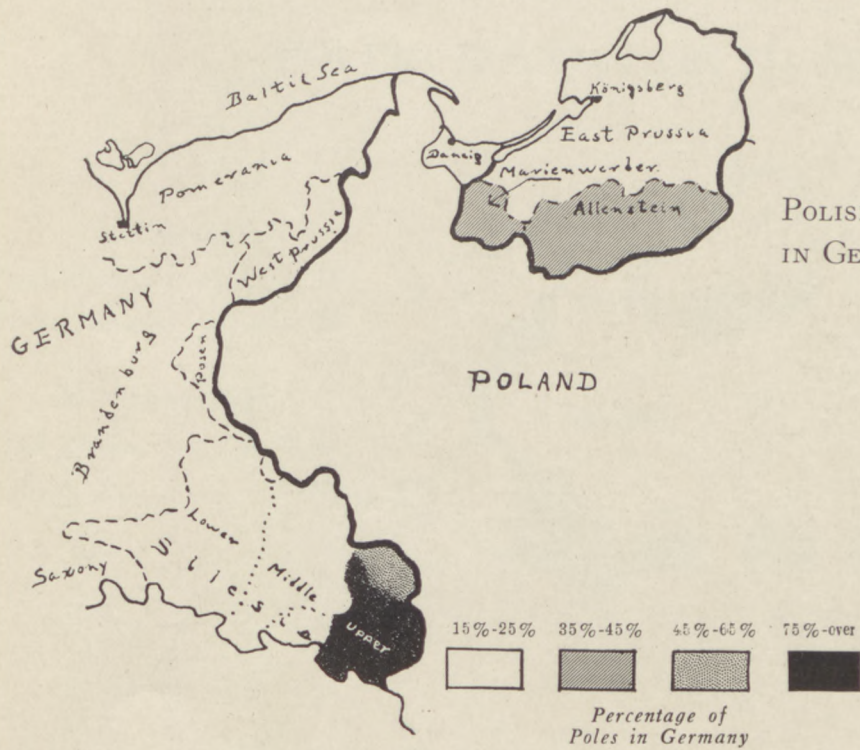
GERMANS IN POLAND

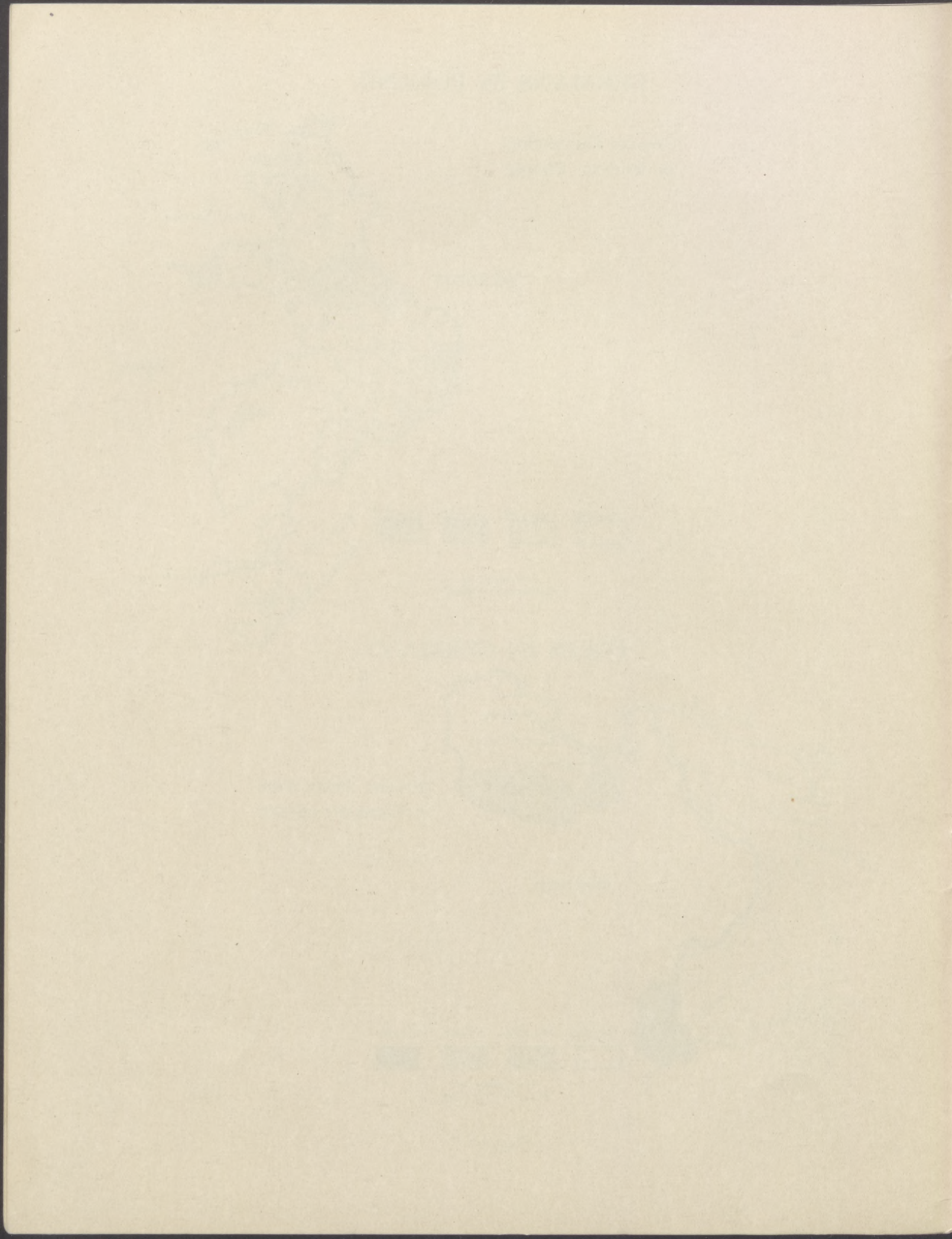
GERMAN POPULATION
IN POLAND 884,105



POLES IN GERMANY

POLISH POPULATION
IN GERMANY 985,283





GERMAN EDUCATION IN POLAND

I. PRIMARY

| | |
|--|--------|
| Schools maintained at public expense | 721 |
| Number of pupils | 80,323 |
| Private Schools | 209 |
| Number of pupils | 11,237 |

II. SECONDARY

| | |
|-------------------------|--------|
| High Schools | 39 |
| Number of pupils | 10,019 |
| Teachers Colleges | 4 |
| Number of pupils | 429 |

GERMAN PARLIAMENTARY REPRESENTATION IN POLAND

| | |
|---------------------------------------|---|
| Senators | 3 |
| Deputies in Sejm | 5 |
| Deputies in Upper Silesian Diet | 7 |



Map showing the percentage of German secondary schools in Poland's border provinces.



Map showing the percentage of German primary schools in Poland's border provinces. Underlined figures show the percentage of German children in each province.

POLISH EDUCATION IN GERMANY

I. PRIMARY

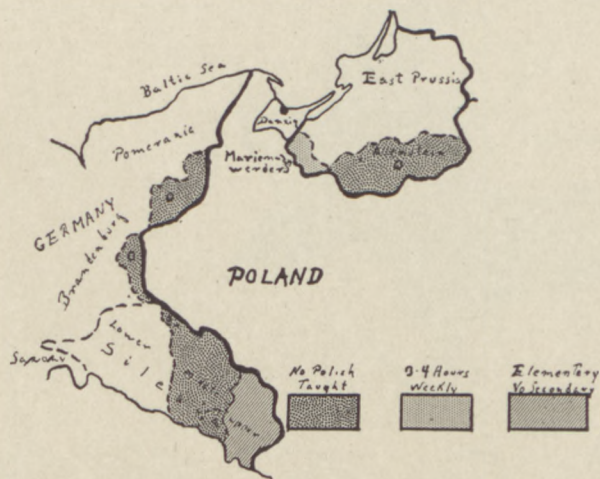
| | |
|-----------------------|----|
| Public Schools | 28 |
| Private Schools | 53 |

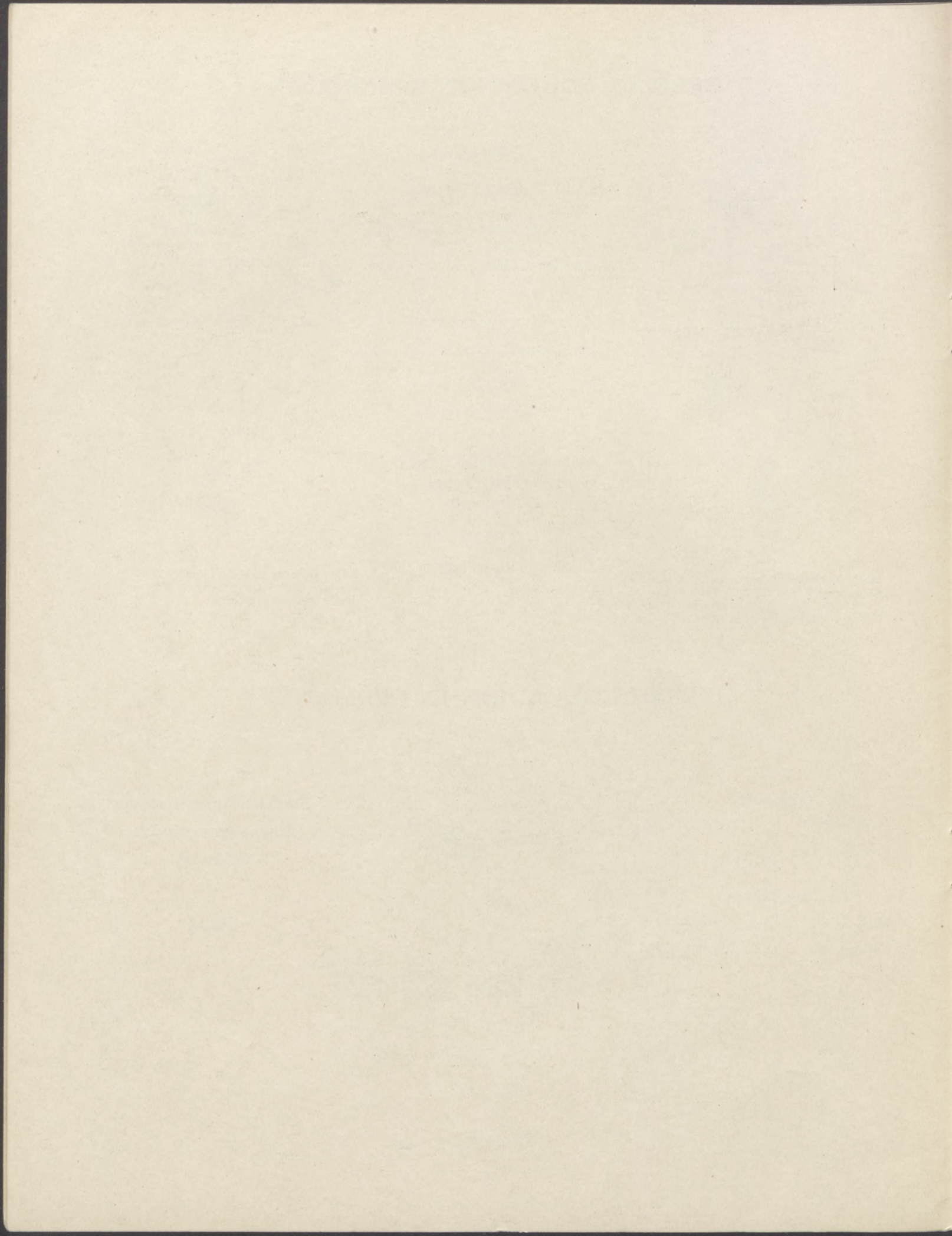
II. SECONDARY

| | |
|--------------------|------|
| High Schools | NONE |
| Colleges | NONE |

POLISH PARLIAMENTARY REPRESENTATION IN GERMANY

NONE

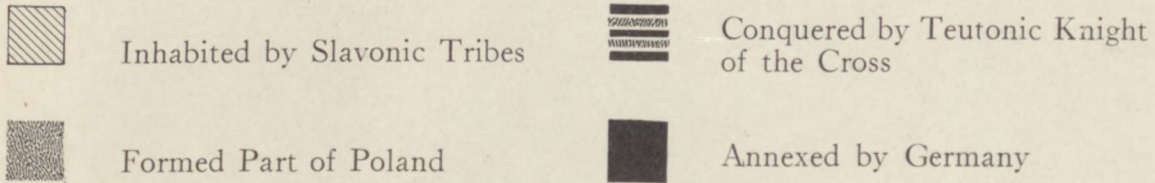
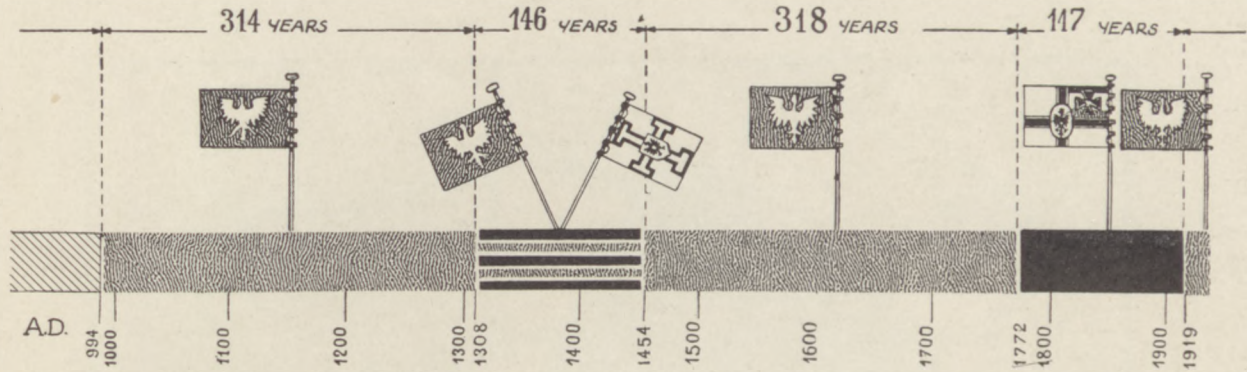




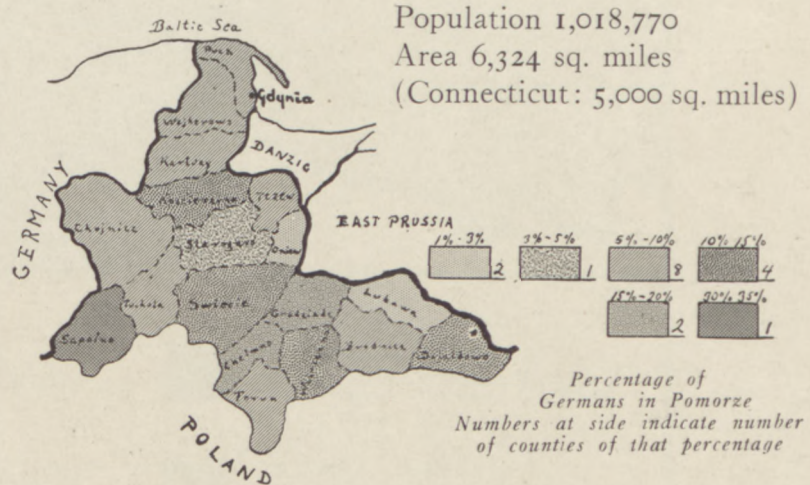
POLISH POMERANIA

NOTE: The definition "Polish Corridor" has been invented by the Germans, and widely used to denote the Polish maritime province of Pomorze (Polish Pomerania).

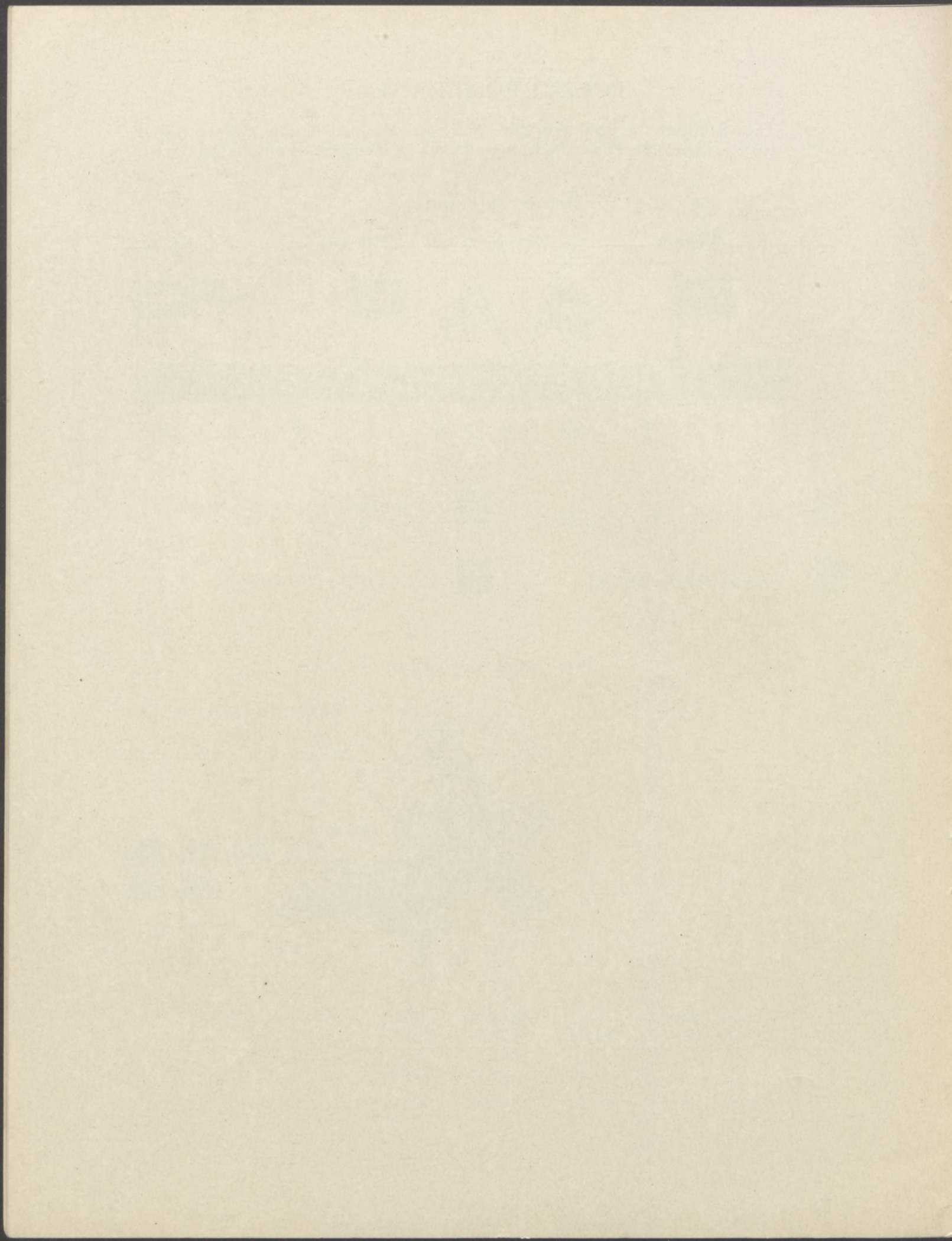
HISTORY OF POMORZE



POPULATION OF POMORZE

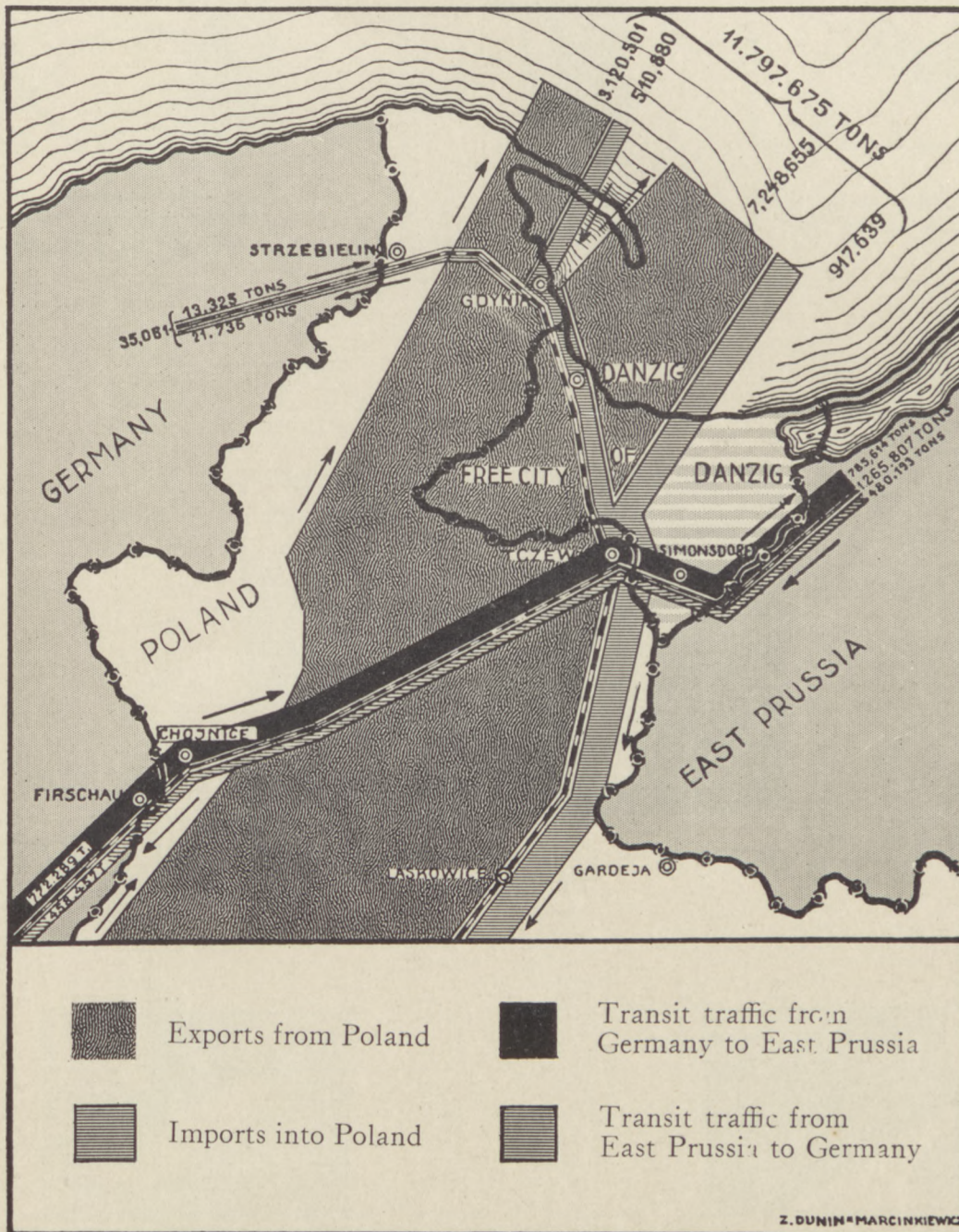


| Source | Total | Germans | Slavs | Percentage of Slavs |
|-------------------------------|-----------|---------|---------|---------------------|
| German Official Figures, 1910 | 990,145 | 437,412 | 552,733 | 56 |
| Polish Official Figures, 1921 | 939,254 | 196,029 | 859,596 | 79.1 |
| Estimate, 1928 | 1,018,770 | 95,460 | 923,310 | 90.6 |



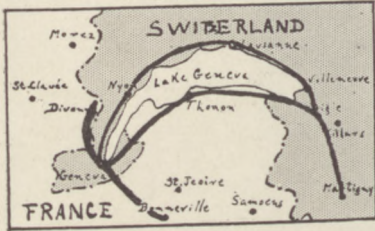
THE ECONOMIC IMPORTANCE OF POMORZE TO POLAND AND TO GERMANY

Volume of Polish imports and exports by sea compared with the transit traffic between Germany and East Prussia across Pomorze, 1930.

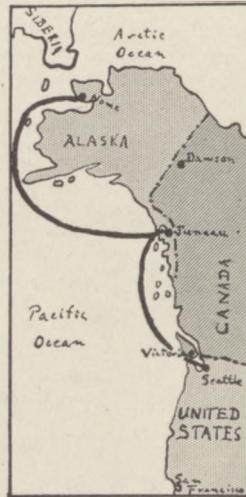


NOTE: 60% of Polish foreign trade goes by sea through Pomorze.

SOME CORRIDORS IN EUROPE AND AMERICA



A double corridor, satisfactorily settled by agreement between Switzerland and France.

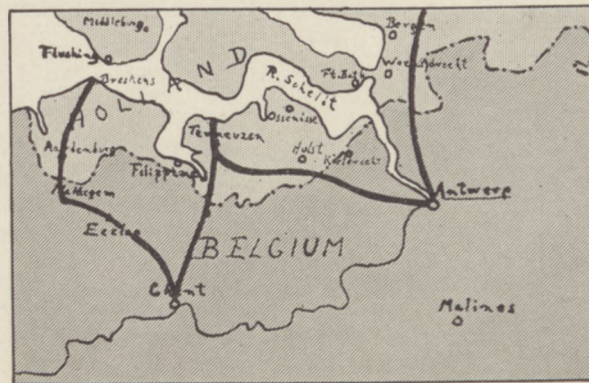


British Columbia, dividing Alaska from the United States.

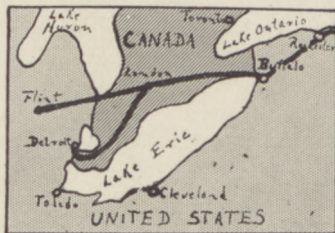


The Panama Canal-Zone, dividing Panama at its capital.

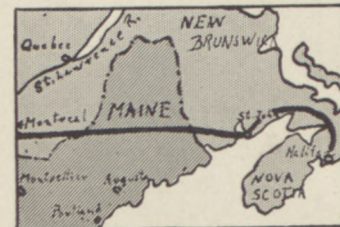
THE BELGIAN CORRIDOR



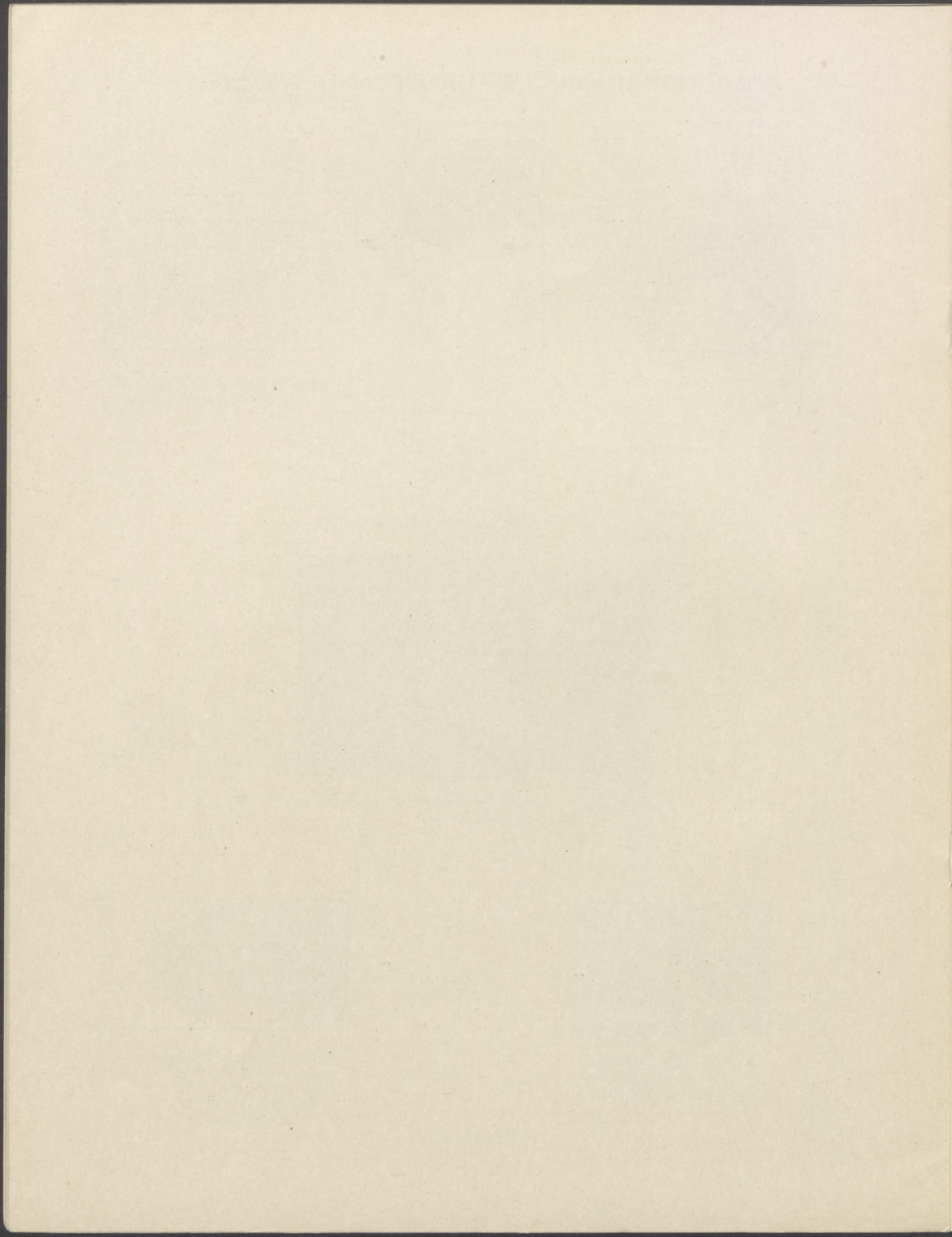
The mouths of the River Scheldt, giving Antwerp access to the sea.



To give Canada its own lake route—a corridor between Detroit and Buffalo.

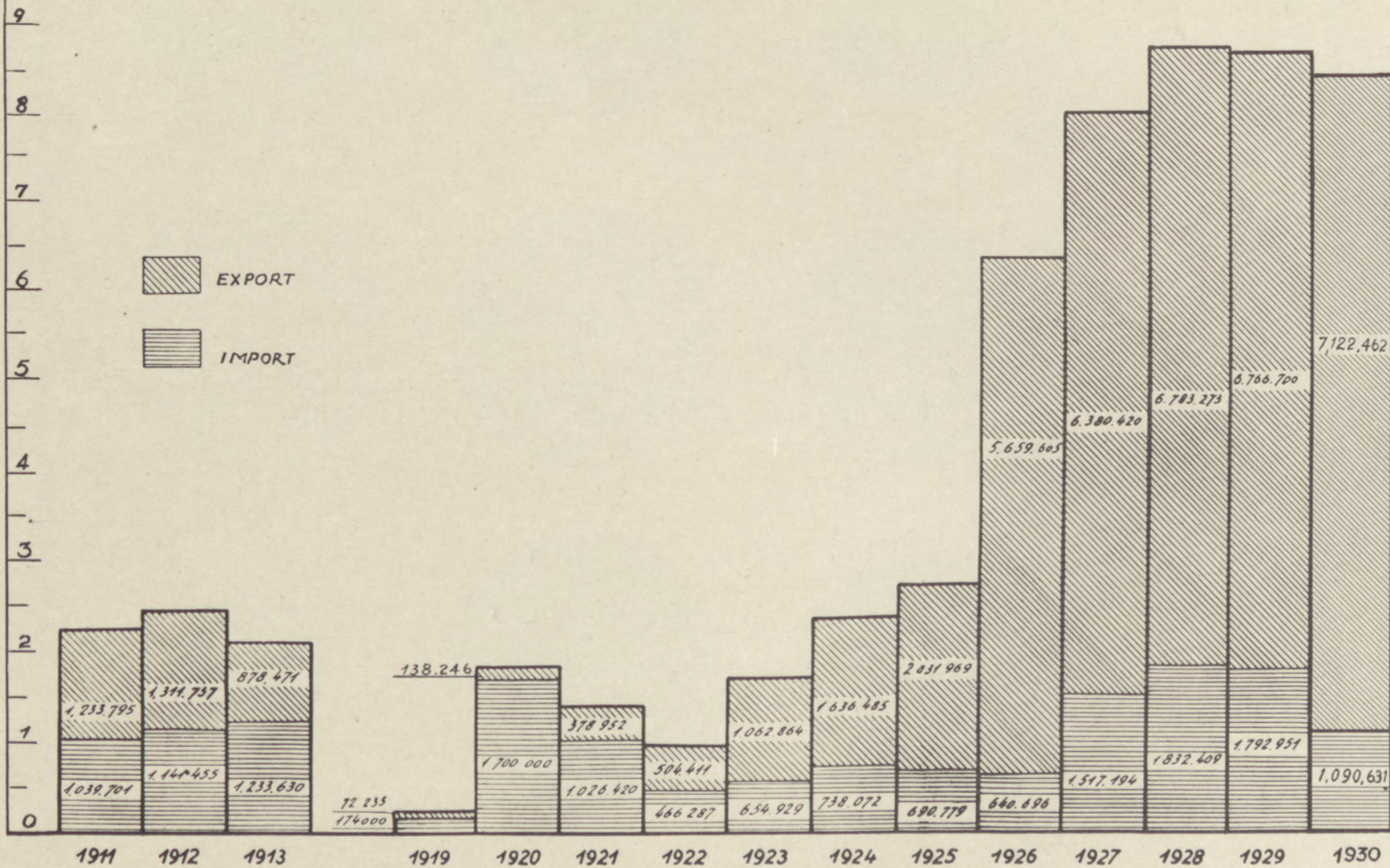


Dividing Halifax from Montreal—a corridor to which the U. S. A. had a disputed claim at the time of settlement.

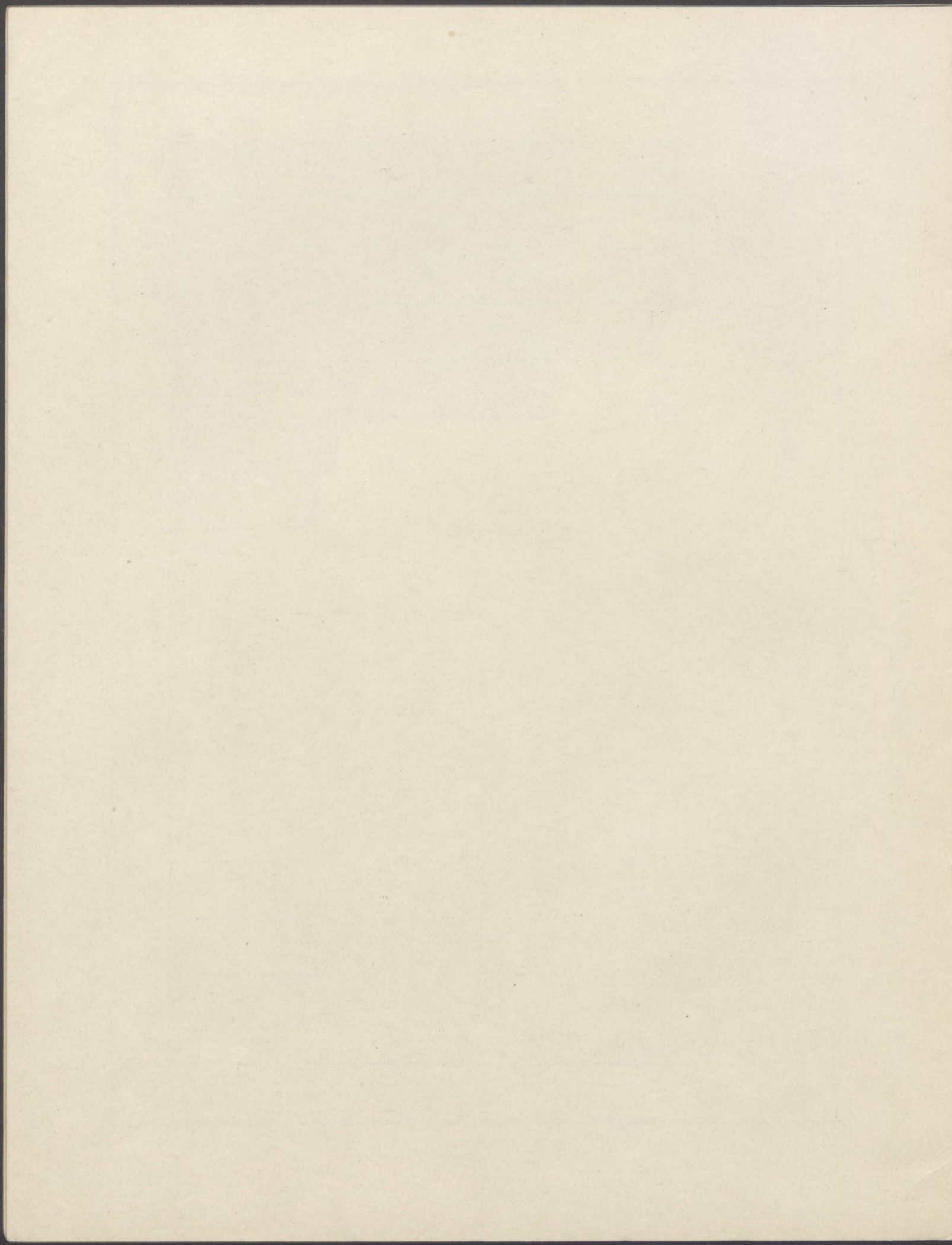


THE TRADE OF DANZIG


TOTAL
in million tons




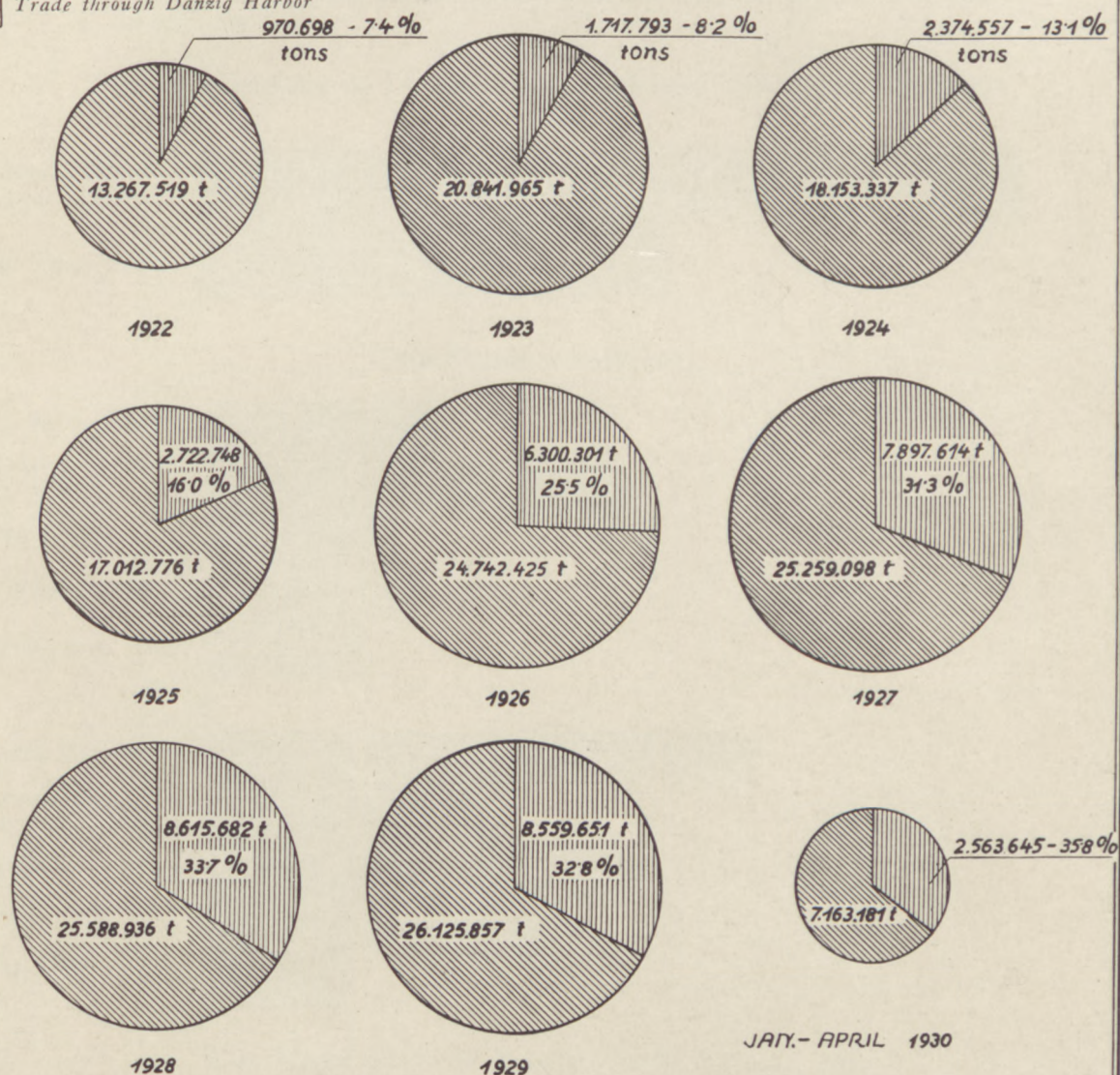
[PLATE 7]



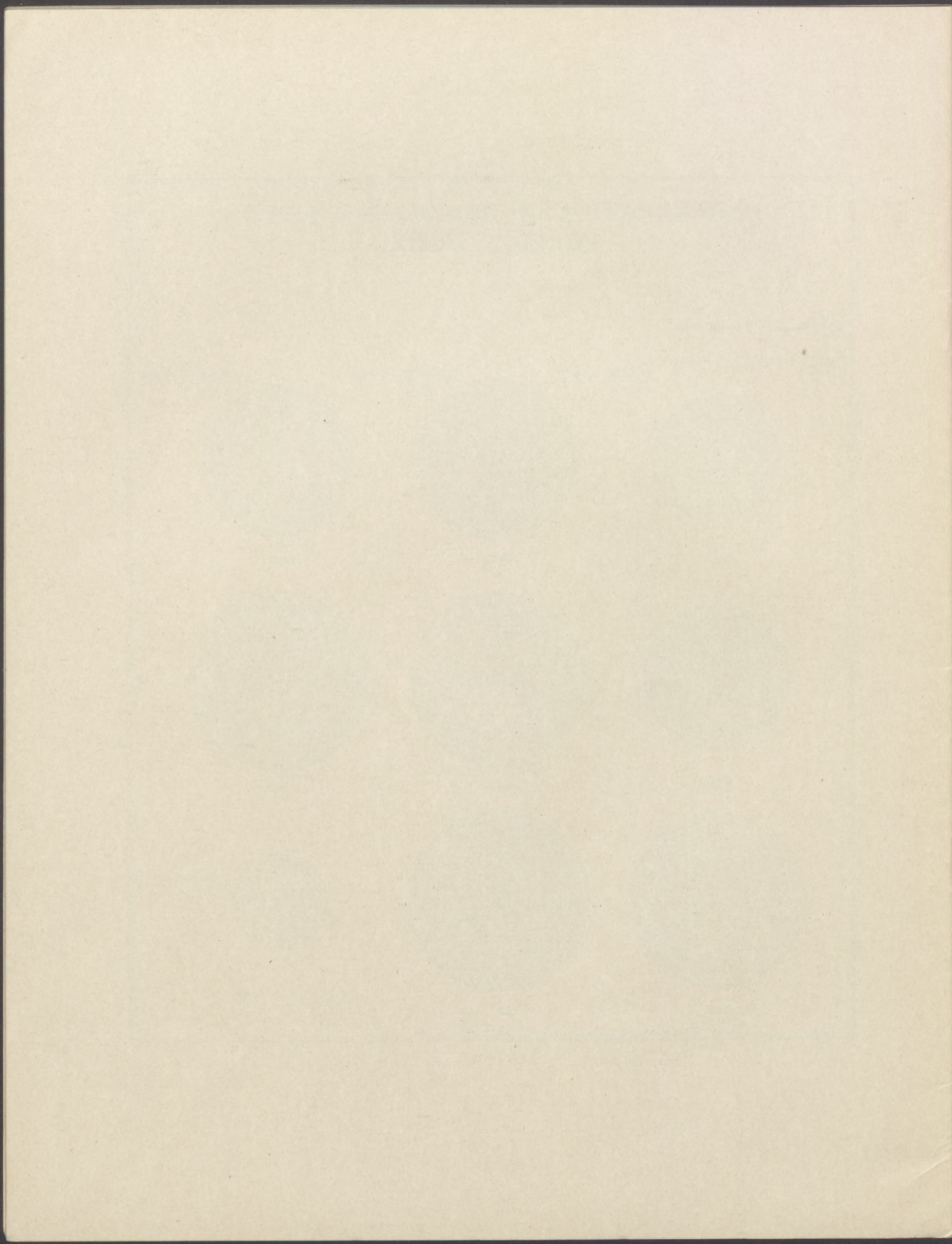
PARTICIPATION OF DANZIG IN POLAND'S FOREIGN TRADE

 Poland's Foreign Trade

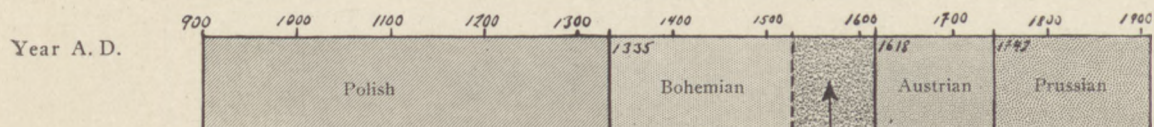
 Trade through Danzig Harbor



t = Tons



UPPER SILESIA



[1526. Bohemia autonomous part of Holy Roman Empire (Austria)]

THE POLITICAL STATUS OF SILESIA

Polish till 1335
(about 400 yrs.)

Bohemian for 283 years

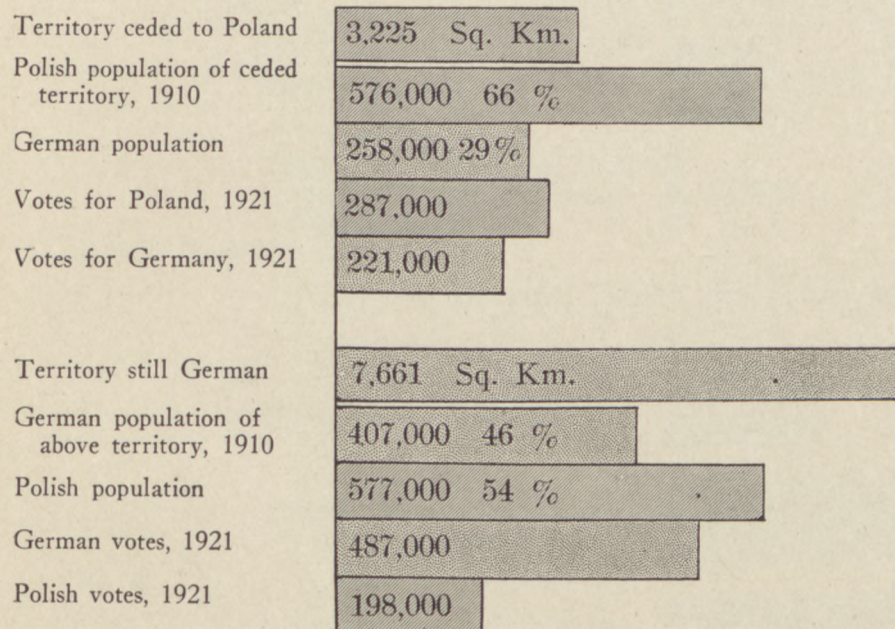
Austrian for 124 years
Prussian for 176 years

In spite of the long time that Upper Silesia has been under foreign rule, its Polish inhabitants have kept their national language and characteristics, and still form most of the rural population.

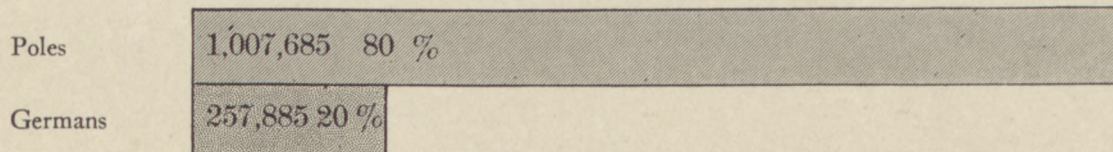
THE NATIONALITY OF UPPER SILESIA, GERMAN AND POLISH FIGURES

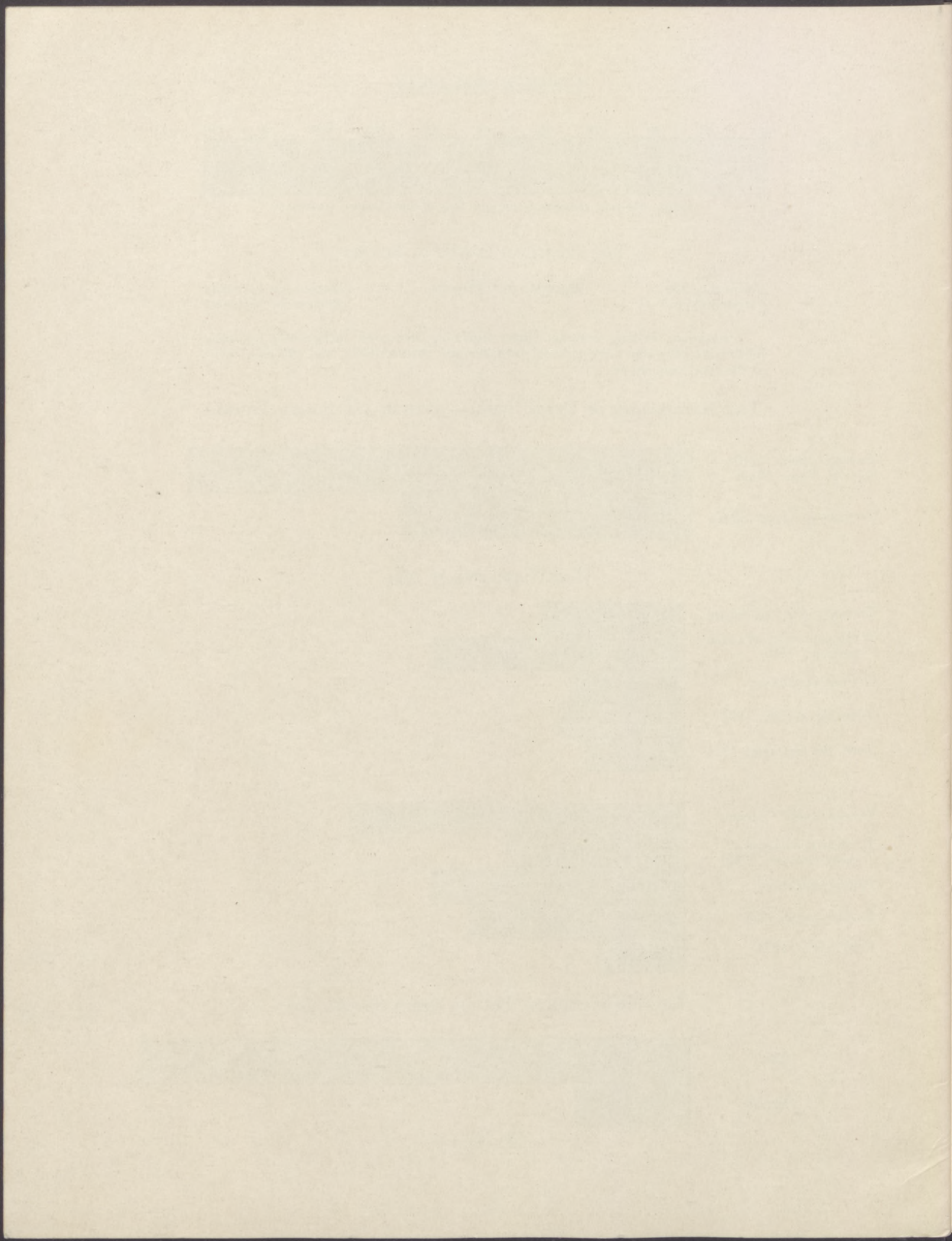


THE PLEBISCITE OF 1921



THE POPULATION OF POLISH UPPER SILESIA, 1927



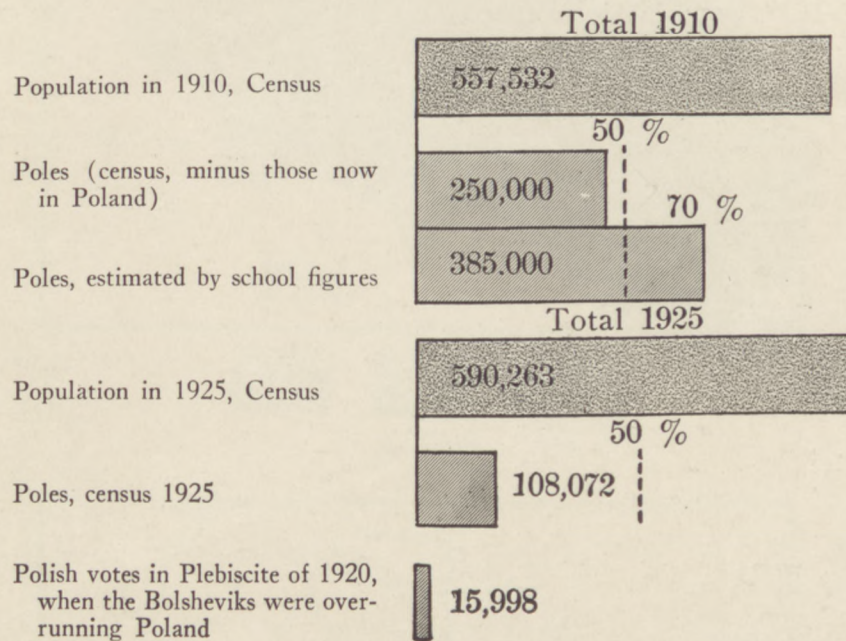


EAST PRUSSIA

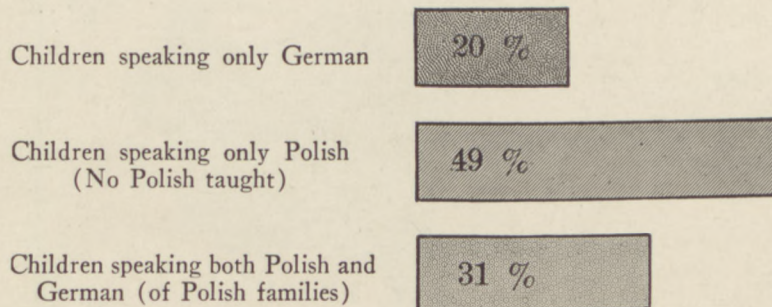
Population 2,500,000

Area 15,000 sq. miles

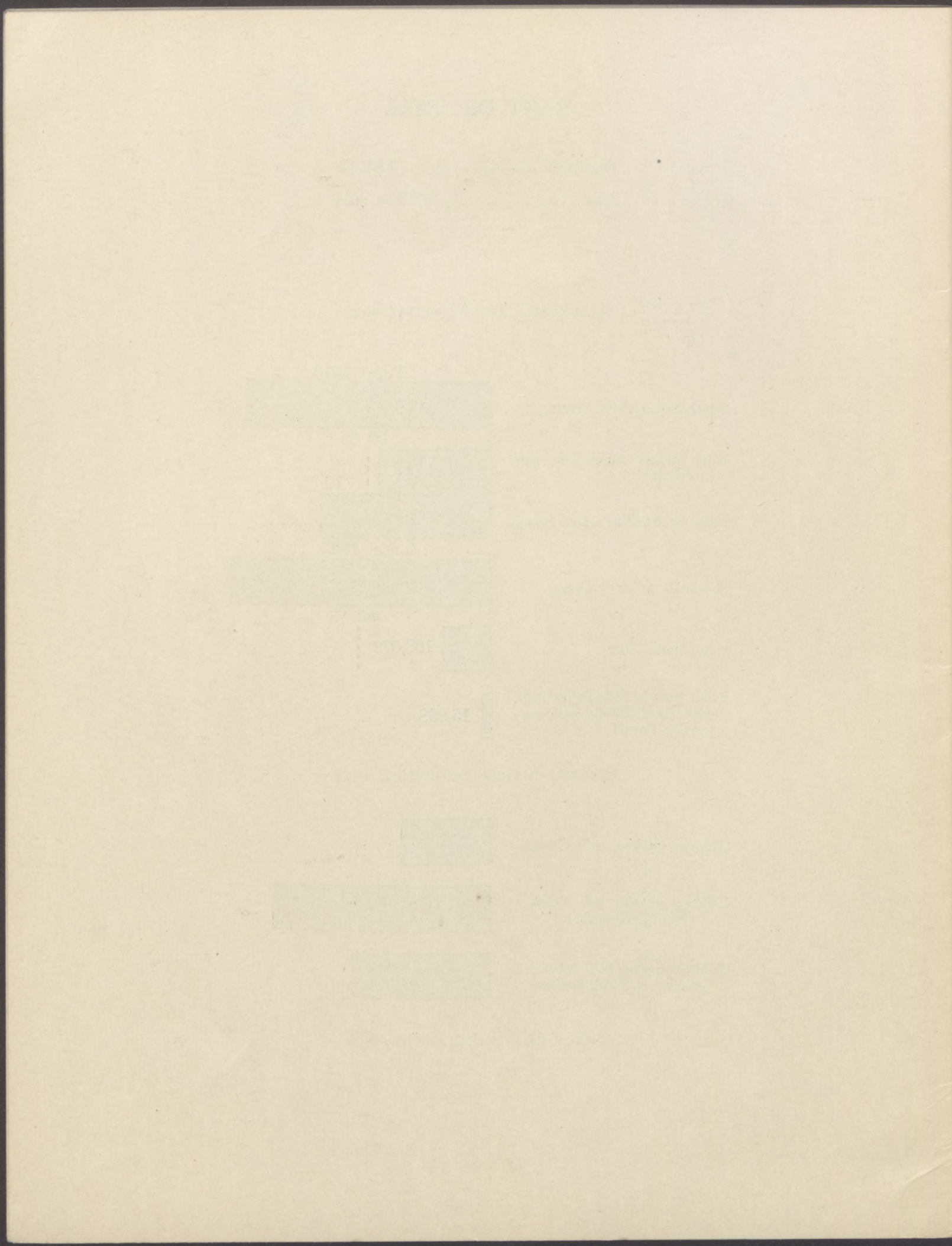
ALLENSTEIN AND MARIENWERDER



OFFICIAL SCHOOL STATISTICS, 1924



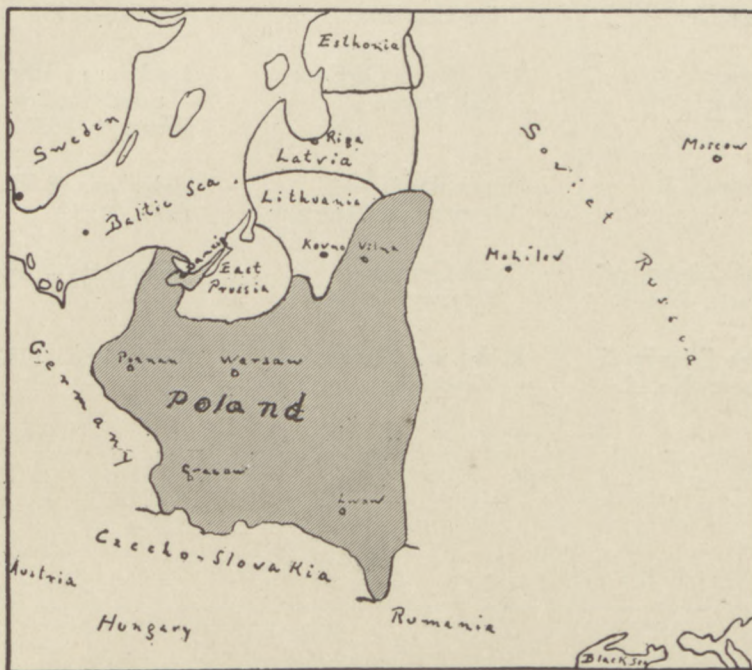
Total of Polish speaking children—80%



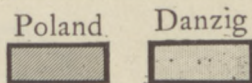
HISTORICAL MAPS OF POLAND

ON THE SAME SCALE

POLAND
1454-1772



POLAND
SINCE 1921



Biblioteka Główna UMK



300052050599

BIBLIOGRAPHY

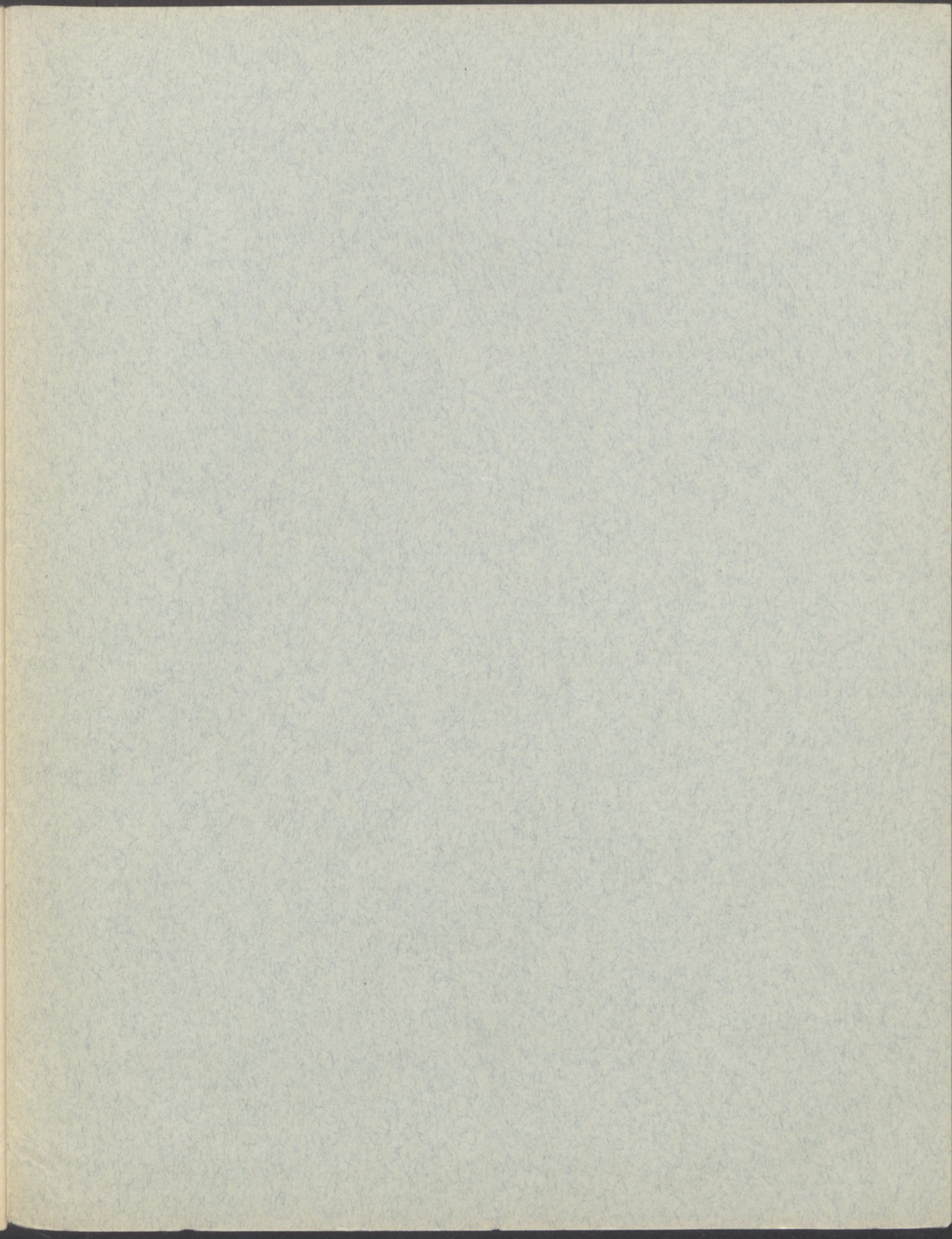
- | | | |
|---------------------------------|--------------------------------------|---|
| Augur | A Bulwark of Democracy | Appleton & Co. New York—1931 |
| Augur | Eagles Black and White | Appleton & Co. New York—1929 |
| Augur | Germany in Europe | Selwyn & Blount, Ltd. London—1927 |
| Diplomat | Poland, Germany and the Sea | Eyre & Spottiswoode London—1925 |
| Machray, Robert | Poland 1914-1931 | Allen & Unwin London—1932 |
| Skrzynski, Alexander | Poland and Peace | G. Allen & Unwin London |
| Smogorzewski, Casimir | Poland, Germany and the Corridor | Williams & Norgate London—1930 |
| Tomas, Adam | The Polish Corridor and Peace | Institute of International Studies Warsaw—1930 |
| Weinstein J. | Upper Silesia—a Country of Contrasts | Gebethner & Wolff Paris—1932 |
| Polish Library of Facts, No. 1. | Polish-German Relations | New York—1931 |
| Polish Library of Facts, No. 3. | Polish and German Minorities | New York—1932 |

W. 2067/51



Gabinet Map

A-290-III



Biblioteka Główna UMK



300052050599