



SALT LAKE
CITY and
VICINITY
—
UTAH

CAPT LAKE
CITY
VICINITY
UTAH

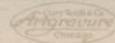


Salt Lake City *and* Vicinity



BIRD'S EYE VIEW OF UPPER MAIN STREET

Salt Lake City, Population about 100,000. Zion, the City of Saints, Capitol of Utah, founded in 1847, upon the shore of the Great Salt Lake, by the Mormon Pioneers, who had trudged overland from Illinois, is a center of business enterprise, natural beauty and historic interest. It is notably, well laid out, with wide, straight streets, shaded by poplars, catalpas and other deciduous trees, and bordered by running mountain water. In paving, electric service, hotels, stores, etc., it is thoroughly modern. The rugged Wasatch Range, hedges it on the east and northeast. Within the city, what usually is inspected by the visitor, is Temple Square, containing the chief Mormon buildings, the Temple, Tabernacle and Assembly Hall. Here also is the Bureau of Information, for the benefit of strangers. Adjacent to the square, are the Bee-Hive and Lion House and the Administration Offices, formerly the quarters of Brigham Young, the Prophet. Rivaling in interest, the evidences of Mormonism, past and present, with which the city is filled, on the west and stretching north and south, lies the Great Salt Lake, 100 miles long, in places 60 miles wide, six times as salty as the ocean and inhabited by only a minute shrimp. Large islands rise above its blue-gray surface. On its shore, a fascinating twenty minutes ride by rail, (during which extensive salt evaporating beds are passed) from the city, is the pleasure resort of Saltair, with mammoth pavilion, amusement features, vast bathing facilities and everything to make a veritable Coney Island, in the midst of the Rockies. Three miles east of the city, is the important army post of Ft. Douglas and in the same section, is the University of Utah, while around about, are innumerable mountain and canon attractions of manifold charms.

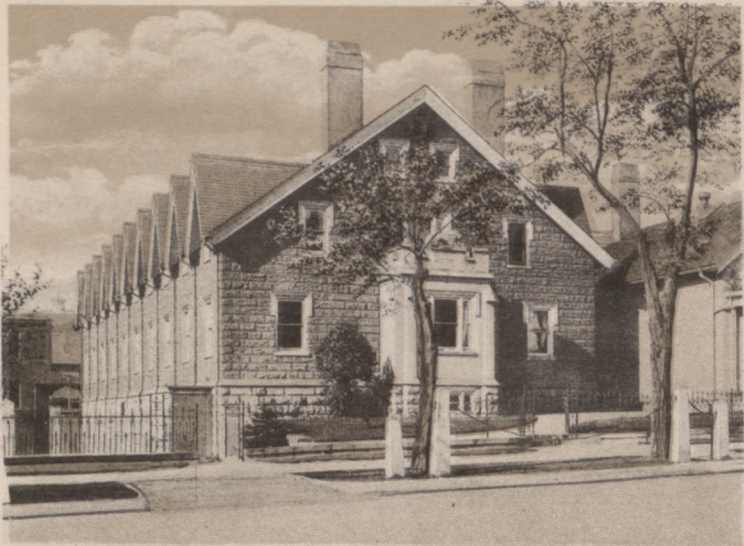




THE TEMPLE BLOCK AND BRIGHAM YOUNG MONUMENT.

The Temple Block is forty rods square and contains ten acres. Besides the Temple and annexed buildings, there are in the square, the Tabernacle, Assembly Hall, Bureau of Information and Sea Gull Monument. At the southeast corner of the block, is a stone marking the base from which Salt Lake City is surveyed. The Temple Block is surrounded by a stone and adobe wall, which was completed August 15, 1854. The Brigham Young Monument, stands at the head of Main Street. Two ideal figures represent a trapper or hunter and an Indian. A bronze relief tablet represents the Pioneers, camping at night. The names of the Pioneers are contained on a lettered tablet.

Lionsfont

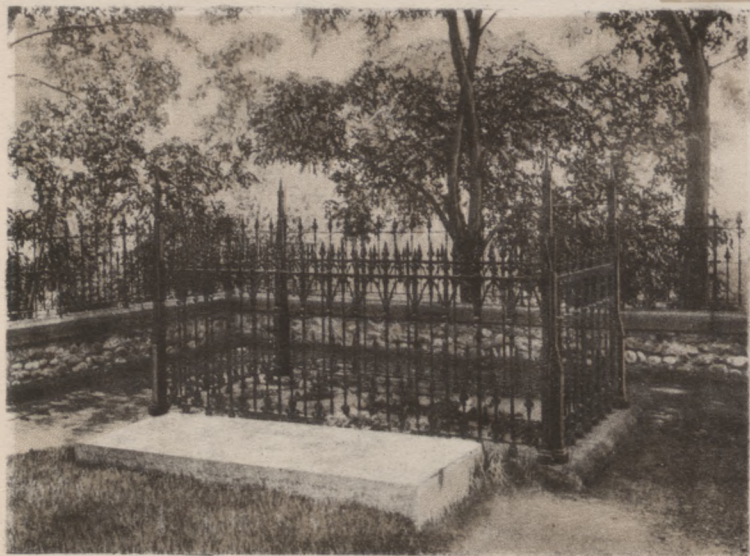


LION HOUSE.

Linnukobfont



BEE-HIVE HOUSE.



BRIGHAM YOUNG'S GRAVE.

Grab



FIRST HOUSE IN UTAH.

Luft



STATE CAPITOL BUILDING.

Utah may justly be proud of its State Capitol, now rapidly nearing completion. It has a commanding location on the north bench. The Capitol proper is 404 feet long, by 156 feet wide. The general style of architecture is pure Corinthian. The diameter of the dome is 64 feet. Fifty two granite columns, 42 feet high, will grace the exterior.

2 Lafayette



DENVER, RIO GRANDE AND WESTERN PACIFIC UNION DEPOT.



OREGON SHORT LINE, SALT LAKE ROUTE. UNION STATION.

Raffert

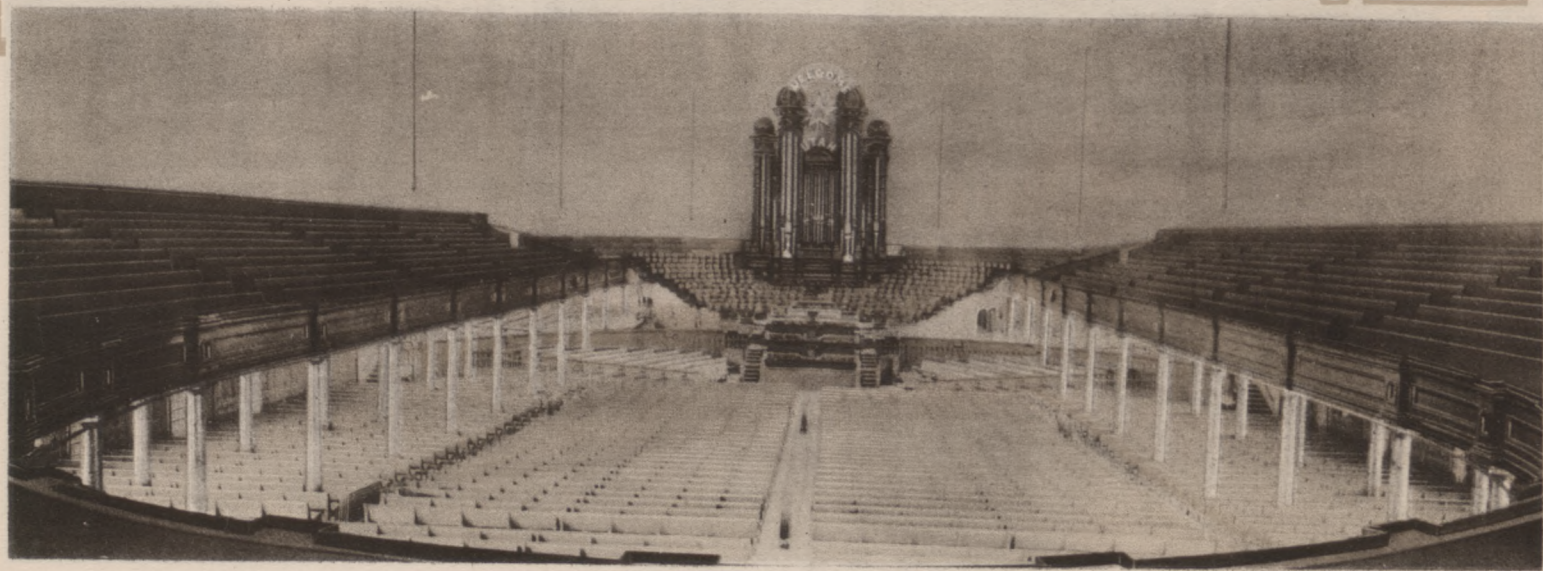


THE CITY AND COUNTY BUILDING.

This beautiful structure was built by the City and County combined. It is two hundred and seventy-two feet, by one hundred and fifty-six feet, Central Tower two hundred and fifty feet. Built of stone and brick, fire-proof and cost nearly eight hundred thousand dollars. It occupies a ten acre block. The grounds are beautifully parked and at night are lighted by electricity. It is a building, of which any city would feel justly proud.



GREAT MORMON TABERNACLE AND SEA-GULL MONUMENT.



INTERIOR, MORMON TABERNACLE.

Innenansicht sowie Tabernakel mit Vogel (Kirche)



TEMPLE GROUNDS, SHOWING MONUMENTS OF JOSEPH AND HYRUM SMITH, BASE OF MORMON TEMPLE ON THE LEFT,
HOTEL UTAH, IN BACKGROUND.

Temple Block, situated in the heart of the city, is a ten acre square. The grounds are beautifully parked, and tourists linger for hours admiring the well kept flower beds and enjoying the shady retreats. Near the centre of the grounds, are the statues of Joseph and Hyrum Smith, the martyred brothers, first Prophet and Patriarch of the Mormon Church. The Hotel Utah, is situated east of the Square.



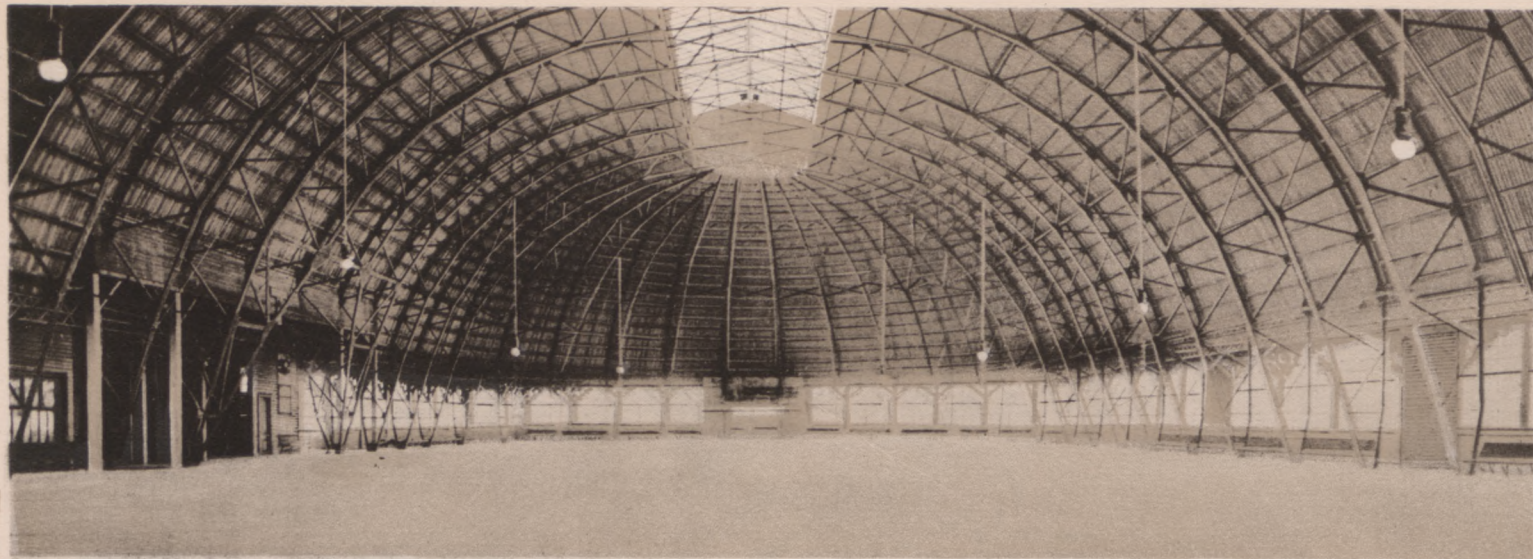
GREAT SALT LAKE CUT OFF.



SALT BEDS, GREAT SALT LAKE.

Reisebeschreibung am Salzsee

Innenansicht vom Pavillon am Salzsee



INTERIOR OF PAVILION, SALTAIR, GREAT SALT LAKE.



ARRIVAL OF TRAIN AT GREAT SALT LAKE.

Ankünfte der Züge am Salzsee

Kapman



THE BARRACKS, FORT DOUGLAS.



THE OFFICERS' HOME, FORT DOUGLAS.

Officers' Home

GENERAL VIEW OF MORMON TEMPLE GROUNDS AND HOTEL UTAH, WITH STATE CAPITOL IN DISTANCE.

Hotel Utah



The Temple Block is 40 rods square and contains ten acres of beautiful gardens. In this Historic Square, are the Great Temple, the Tabernacle, Assembly Hall and Bureau of Information. The Temple, commenced April 6, 1853 and completed April 6, 1893, at a cost of four million dollars. It is 186½ feet long, by 118½ feet wide. The foundation or footing walls are 16 feet thick and 8 feet deep, the basement walls 8 feet thick and upper walls 6 feet thick. The side walls are 107½ feet high. West Center tower, 204 feet high, east center tower, 210 feet high, surmounted by a hammered copper statue, 12½ feet high, gilded with pure gold leaf. The large Tabernacle was commenced in 1865, and completed in April 1870. It is a fine Auditorium, 150 feet wide, 250 feet long and 80 feet high, having wonderful acoustic properties. Seating capacity 8,000. Hotel Utah, opened June 9, 1911, is a veritable white Palace, built of White enamel brick, with terra cotta trimmings, at a cost, including furnishings, of two million dollars.

It is 176 feet by 200 feet, and ten stories high, surmounted by a tower, which rises four stories above the roof gardens and capped with a mammoth bee-hive, set on a pedestal, framing on each of its four panels the Eagle and Shield, all of which is illuminated at night by 6,400 tungsten lights. Sea Gull Monument, erected in commemoration of the Miraculous Delivery of the Mormon Pioneers from starvation, when a plague of crickets threatened destruction of their crops in 1848 and 1849. Flocks of Sea Gulls appeared and preyed upon the destroyers, until the pests vanished. The Utah State Capitol, has a commanding location on the North of the City. It is 404 feet long, by 156 feet wide. The general style of Architecture is pure Corinthian. The diameter of the Dome is 64 feet. Fifty-two Granite Columns, 42 feet high, will grace the exterior.



MAIN STREET, LOOKING SOUTH.

Main Street is the principal business thoroughfare in Salt Lake City. The standard width of a Salt Lake street is 132 feet, thus allowing double tracks for street cars, without fear of congestion by other traffic.

Lainy



BRIGHAM YOUNG MONUMENT.

The Brigham Young Monument, stands at the head of Main Street. Two ideal figures represent a trapper, or hunter and an Indian. A bronze relief tablet represents the Pioneers camping at night. The names of the Pioneers are contained on a lettered tablet.



SEA GULL MONUMENT, TEMPLE BLOCK.

Erected in grateful remembrance of the Mercy of God to the Mormon Pioneers.

L. W. Moore



EAGLE GATE, LOOKING TOWARDS STATE CAPITOL.

This structure, originally holding double gates, formed part of the unique cobble-stone wall, around the property of Brigham Young. For several years it has been preserved as a land mark, having been reconstructed of cut stone. The Eagle, originally of carved wood, has been sheathed with copper, in order that it may withstand the elements. It has no special significance to the Mormons, except that they are always glad to see the outspread and protecting wings, of our noble bird of freedom. The Eagle gate stands at the head of the longest straight street in the world.

Arthur Ford



THE WASATCH MOUNTAINS, FROM LIBERTY PARK LAKE.

On the east of Salt Lake Valley, is the Majestic Wasatch Range of the Rockies, its mountain peaks being snow-capped the year round. Several fine public parks are owned by the Municipality, the largest of which is Liberty Park, located in the southern part of the city.

Wasatch Range vom Freiheitspark im Sommer

2. Høyningssyde



BEAUTIFUL SUMMER RESORT, WANDAMERE.



SCENE AT LAGOON, NEAR SALT LAKE CITY.

4 Views



ST. MARY'S CATHEDRAL.



METHODIST EPISCOPAL CHURCH.



IMMANUEL BAPTIST CHURCH.



FIRST PRESBYTERIAN CHURCH.

There are seventy-two church buildings in Salt Lake City. Prominent among them are the Catholic Cathedral, the First Presbyterian Church, the famous Mormon Temple and Tabernacle and many other splendid religious edifices. Almost every religious denomination is represented, including the Adventist, Baptist, Catholic, Christian, Congregational, Episcopal, Greek, Hebrew, Latter Day Saints, Lutheran, Methodist, Presbyterian, Reorganized, Scientist and Unitarian, besides several other organizations, which maintain missions and church activities.

Garylyoff



FEDERAL BUILDING AND GENERAL POST OFFICE.

This fine building of cut Utah Stone, lined with polished marble, cost near a million dollars and was completed in 1906. It is situated on Main Street, four blocks south of the Temple, on the same side of the street. The General Post Office and Federal Offices are located in the building.

4 Krankenhäuser



THE HOLY CROSS HOSPITAL.



ST. MARK'S HOSPITAL.



JUDGE MERCY HOSPITAL.



DR. GROVES L. D. S. HOSPITAL AND NURSES' HOME.

Sapina am Baljeu



SALTAIR PAVILION, GREAT SALT LAKE.

Saltair is world-famous for its wonderful bathing, which constitutes one of the greatest attractions at the resort. You cannot sink! Here is water of such density that the human body remains on the surface, regardless of the bather's wishes, and once in the briny waves, you enjoy the most remarkable experience and sensation. You float like a cork! You are your own boat, paddling yourself here and there, with all the delight of a brand new novelty. The salt water is invigorating in the extreme.



CITY PARK AND A PORTION OF THE BUSINESS DISTRICT, OGDEN, UTAH.

Biblioteka Główna UMK



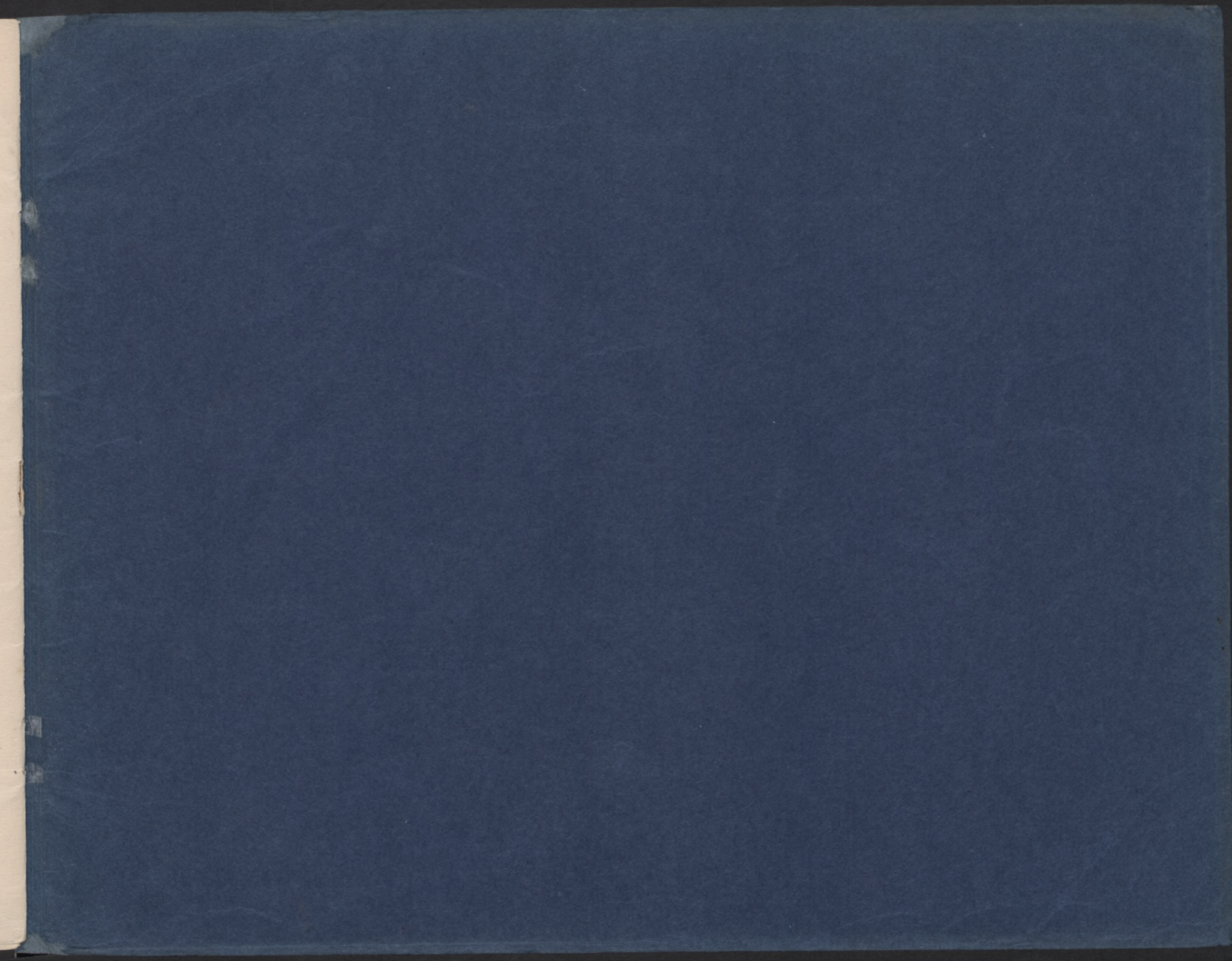
30021762213



VIEW OF OGDEN RIVER AND CANYON, UTAH.



THE NARROWS, OGDEN CANYON, UTAH.



Zbiory Graficzne

Biblioteka
Główna
UMK Toruń

M. 334