

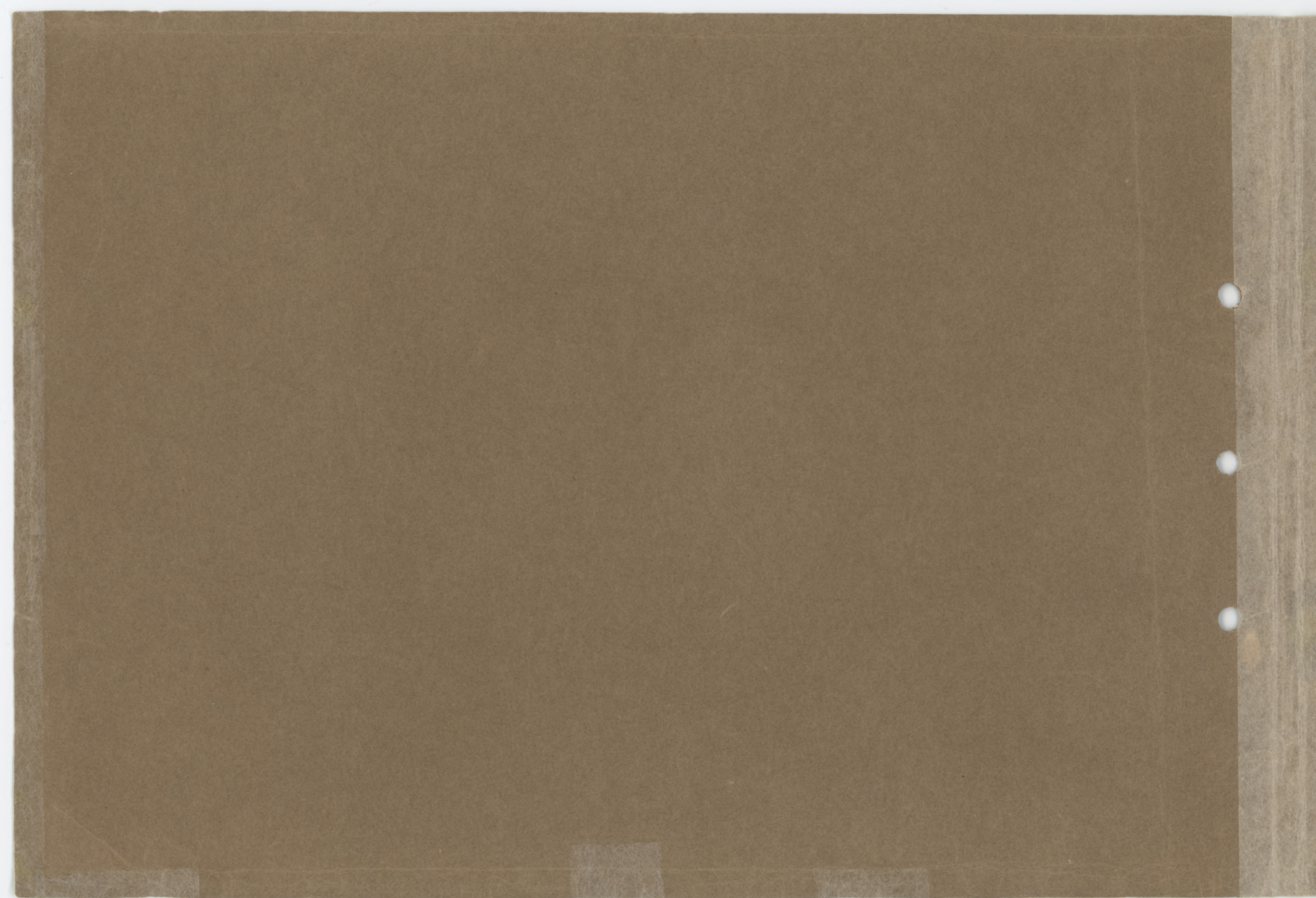


VIEWS OF
HALIFAX

NOVA SCOTIA.

THE
MEMORIAL TOWER
NORTH WEST ARM

THE
EMPIRE PORT AND
EASTERN GATEWAY OF
CANADA



KONSTANTY J. KOWSKI



Halifax City

The Empire Port



ONE OF THE FINEST HARBORS
AND STRONGEST FORTRESSES
IN THE WORLD. THE CITY
BEAUTIFUL, ITS DELIGHTFUL
SURROUNDINGS, AND MILITARY
AND NAVAL EQUIPMENT, SHEWN
IN OVER FIFTY TYPICAL VIEWS.

McALPINE PUBLISHING CO., Ltd.
Publishers, Printers, Lithographers
HALIFAX, CANADA

INTRODUCTION



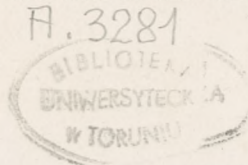
HE world still loves the heroic, and the visible emblems of war always interest the sightseer. Halifax is a famous Garrison City, and divides honors with Quebec in its interest to Americans, the latter being a typical old-world continental city, while Halifax is thoroughly English. The Americans who visit these two cities are entering foreign lands. They are seeing the old world transplanted into the new, and at Halifax visitors will also find a great railway and steamship terminus, which is to the Dominion of Canada what New York is to the United States.

The "Memorial Tower," the corner stone of which was laid October 2nd, 1908, to commemorate the one hundred and fiftieth anniversary of the birth of representative government in His Majesty's Dominions beyond the seas, is one of the commanding objects that meet the eyes of the voyager when entering Halifax Harbor.

Halifax is English in everything—in its business habits, its social customs, its mode of dress, its amusements. And well it might be, nurtured as it has been up to within a few years by the naval and military treasury of the Mother Country. The best regiments of the line have been in garrison here; the finest cruisers have ridden at anchor at the dockyard. The bravest British soldiers and sailors have led Halifax society; thousands of Tommies and Jack Tars have daily gone about their avocations at this port.

Halifax has great importance in the eyes of the King, and is one of the strongest links in the chain of Britain's Empire around the world. Halifax was founded a century and a half ago by Hon. Edward Cornwallis, and was named after the Earl of Halifax, a statesman of the time. Its magnificent harbor made it the natural naval and military capital of Great Britain in the New World. Millions have been expended upon fortifications, which bristle on every hand. The navies of the world could ride at anchor upon this spacious harbor. The approaches are guarded by a number of forts on either side. First are York Redoubt and Spion Kop; then at either end of McNab's Island, which lies directly across the harbor mouth, are Ives' Point Battery and Fort McNab. Next comes George's Island with Fort Charlotte. To the left is Point Pleasant Battery, at the extreme southern extremity of the peninsula upon which Halifax is situated. On the city side of the harbor are also Fort Ogilvie and Fort Cambridge, whilst Fort Clarence is across on the Dartmouth shore.

High over the city rise the frowning battlements of the Citadel, Fort George, a gigantic work of engineering, full of mysterious passages, concealed batteries and secret arsenals. Other objects of interest are the dockyards, where the men-of-war of this station are outfitted; the flagship and cruisers of the Canadian



A. 3281
K. 183/87
G. 483/87

Squadron, as they lie at the anchorage; the massive dry dock, where the Indiana and other of Uncle Sam's warships have been repaired.

What with reviews, march-outs, sham battles, bombardments, church parades and such like, the Tommies and Jack Tars make things very interesting for Halifax people and their guests during the summer months.

But the naval and military features do not exhaust the list of attractions which Halifax offers. There are the beautiful public gardens, the very finest on the continent; Point Pleasant Park, with its delightful driveways, cooled by Atlantic breezes; Bedford Basin, a broad expanse of water at the head of the harbor, delightful for boating, yachting, bathing and excursions.

Halifax is the Capital City of Nova Scotia; the Provincial Building, Government House, Court House and other public buildings are beautiful specimens of colonial architecture.

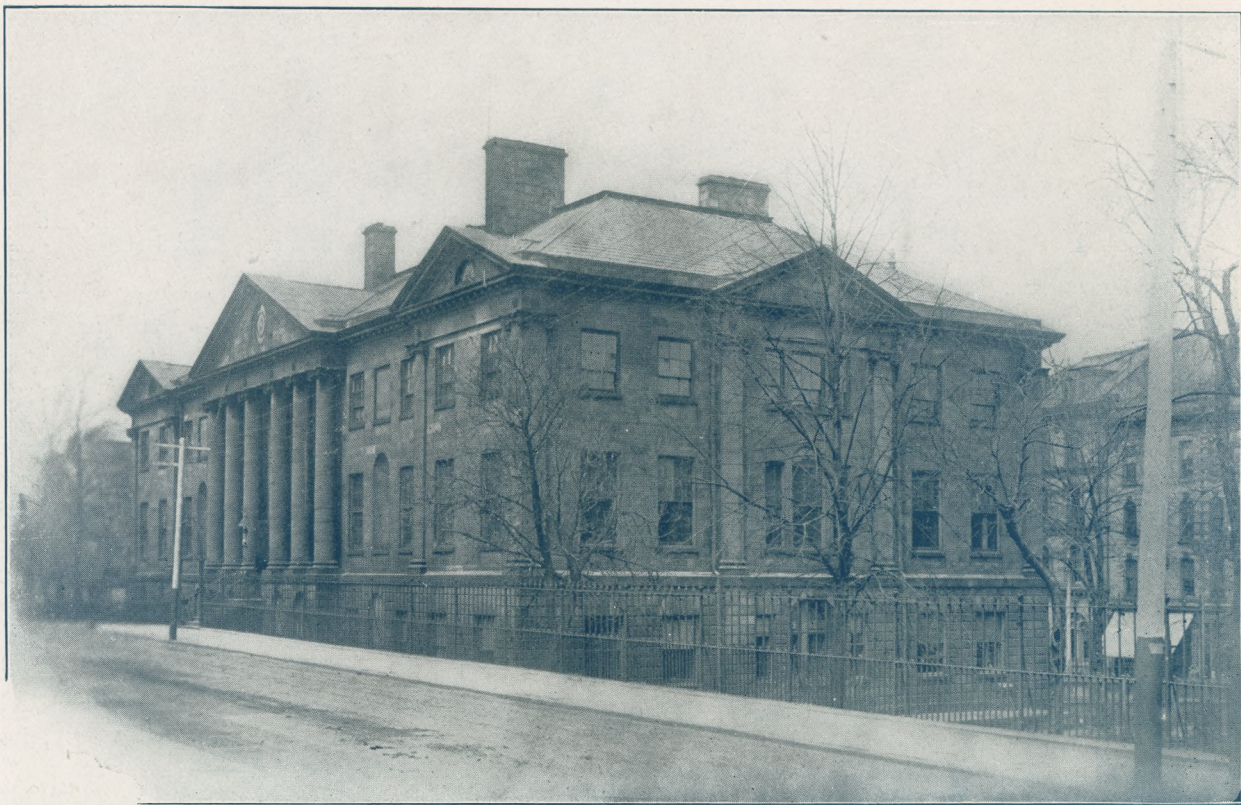
The Northwest Arm, three miles long and a quarter to three-quarters of a mile wide, a lovely inlet of the sea, with its ever-changing tides, bounds the western side of Halifax City. It has a reputation almost world-wide for the charm of its scenery, its pure atmosphere and the quiet beauty of its historic surroundings. In the olden times it was a Mecca of the aborigines, who made annual pilgrimages to this spot for the purpose of fishing and hunting. It was second nature with the Indians to pick out the most pleasant locations for their wigwams, and they came in numbers for hundreds of miles to camp on the banks of the Waegwoltic. In fancy one can see the mirrored surface of the Arm broken by a thousand paddles, and the steep slopes of the containing hills clothed with the primeval forest right down to the water's edge. "The memory of the red man, it lingers like a spell," and adds a pathetic and picturesque touch to the story of the Arm. History repeats itself, and now the Northwest Arm is the pleasure resort for the white man and his children, who disport themselves in thousands of boats and canoes; and with its regattas and illuminated boat parades, accompanied by the sweet strains of military bands, it rivals in fairy-like enchantment the fetes of the old world. The history of the Northwest Arm is an entertaining story, and for full information we would refer the reader to "Sketches and Traditions of the Northwest Arm," by J. W. Regau, of Halifax.

Halifax is a noted educational centre. Among other institutions of learning are Dalhousie College and University, Canadian Naval College, Nova Scotia Technical College, Presbyterian Theological College, Holy Heart Seminary, Halifax Ladies' College, Convent of the Sacred Heart, St. Mary's College, and Schools for the Blind and Deaf and Dumb.

Its healthy, invigorating climate, first-class hotels, excellent theatres, efficient street car service, and good stores are other features that recommend Halifax as a place of residence or sojourn.



GOVERNMENT HOUSE



PROVINCIAL, BUILDING



CITY HALL, AND PARADE



ADMIRALTY HOUSE AND GROUNDS



ALL SAINTS' CATHEDRAL,



ST. MARY'S CATHEDRAL, AND GLEBE



CHEBUCTO SCHOOL,



TECHNICAL COLLEGE



MARTELLO TOWER



HALIFAX, LOOKING NORTH FROM CITADEL HILL,



TOWN CLOCK AND CITADEL HILL,



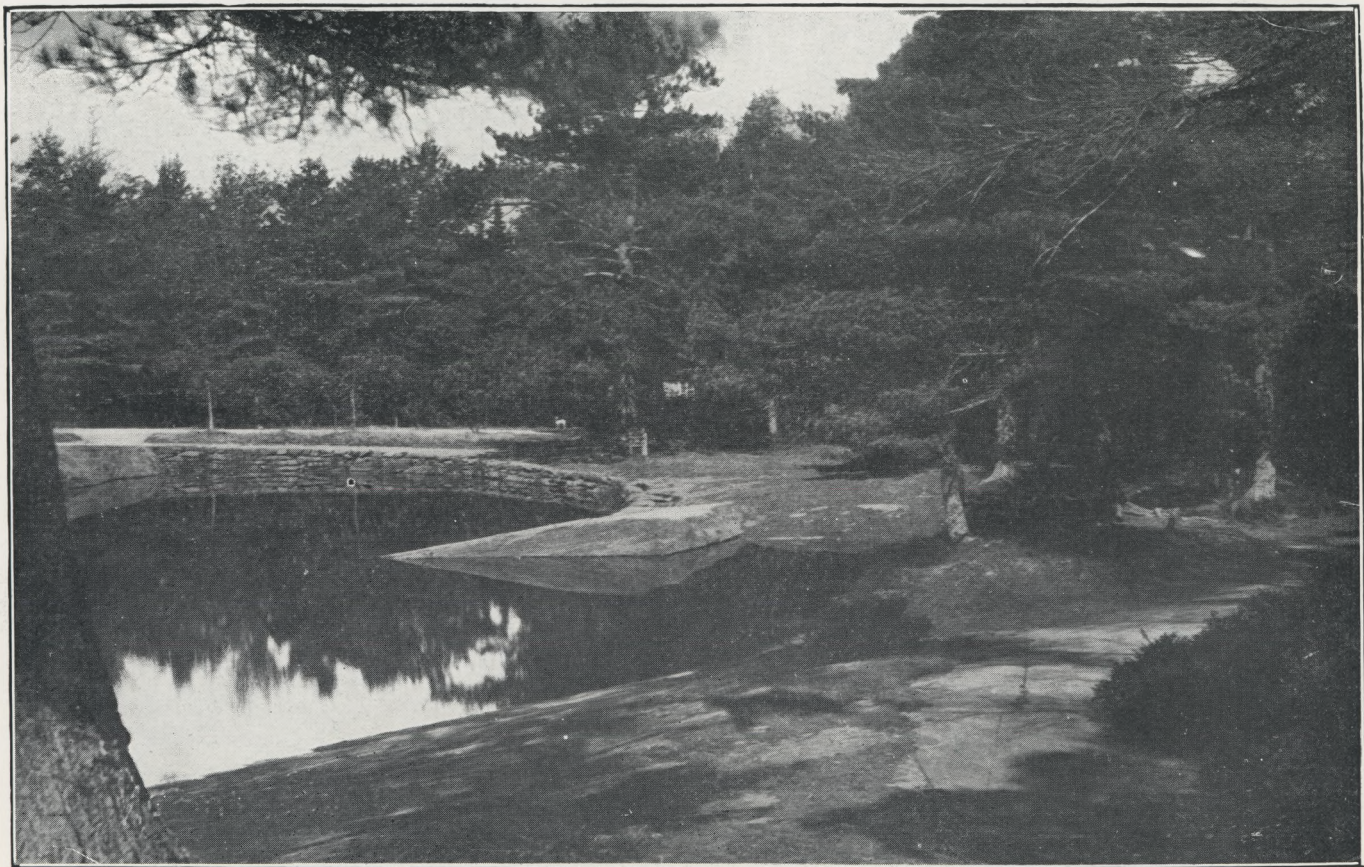
BARRINGTON STREET LOOKING SOUTH FROM PARADE



HOLLIS STREET, LOOKING SOUTH FROM THE POST OFFICE



POST OFFICE AND PUBLIC MARKET



POND IN POINT PLEASANT PARK





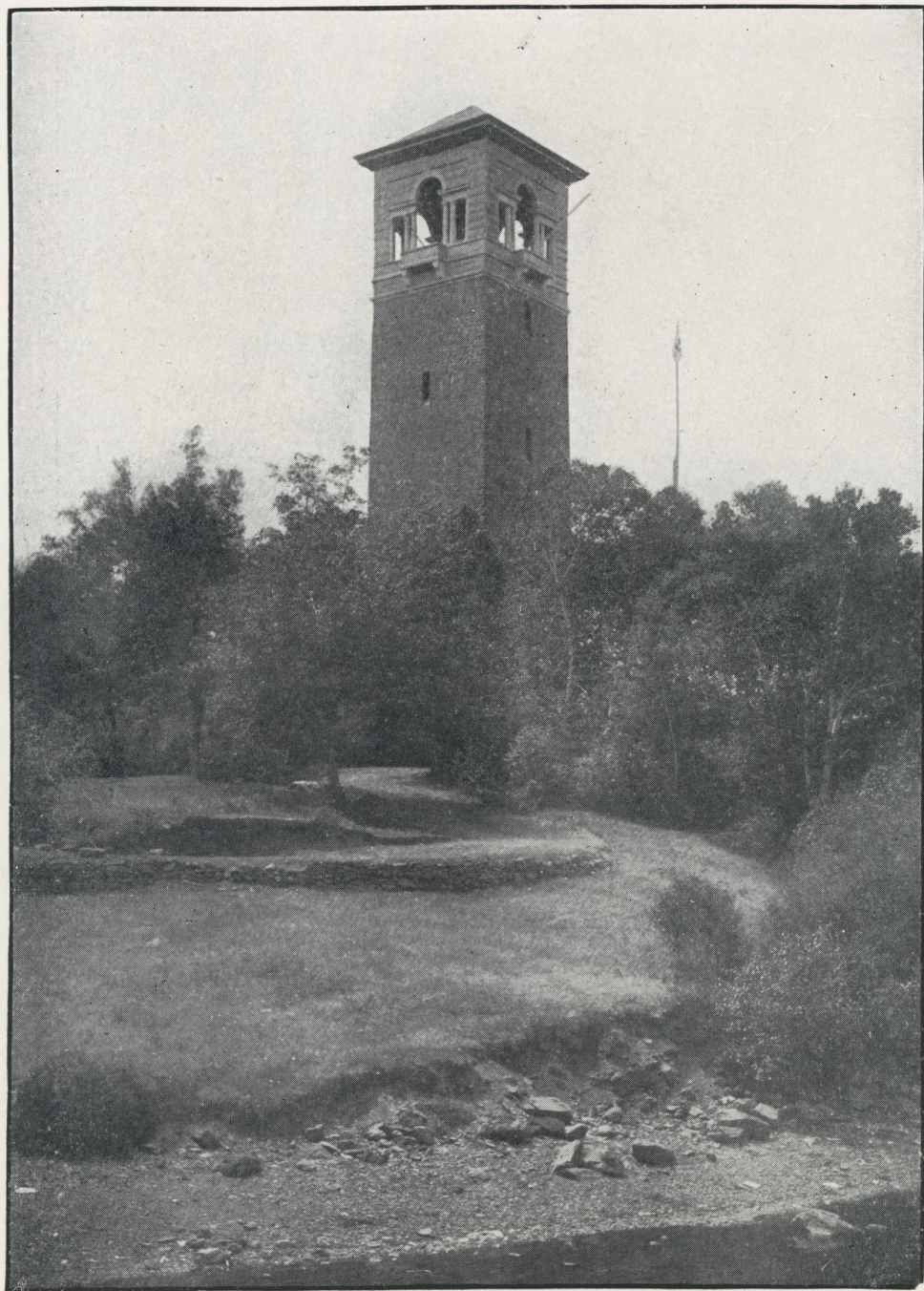
THE RUNNING BROOK, PUBLIC GARDENS



ONE OF THE LILY PONDS, PUBLIC GARDENS



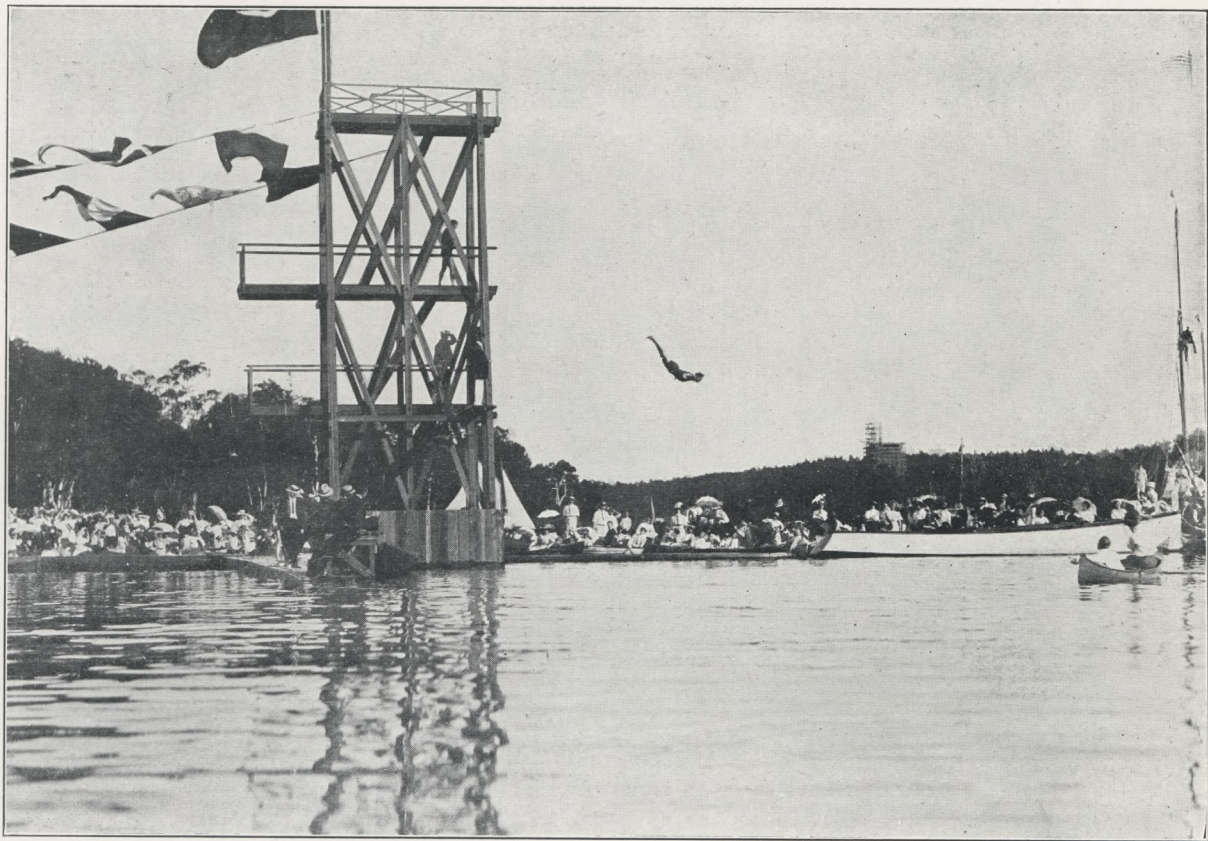
MEMORIAL TOWER IN WINTER



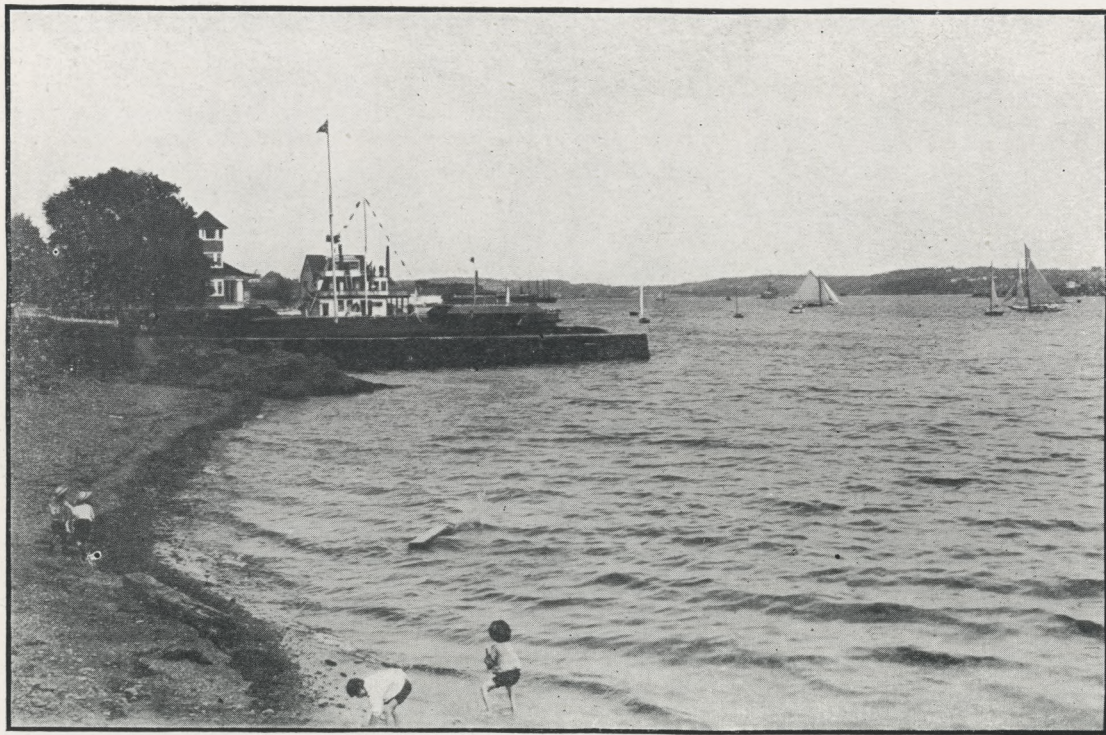
MEMORIAL, TOWER IN SUMMER



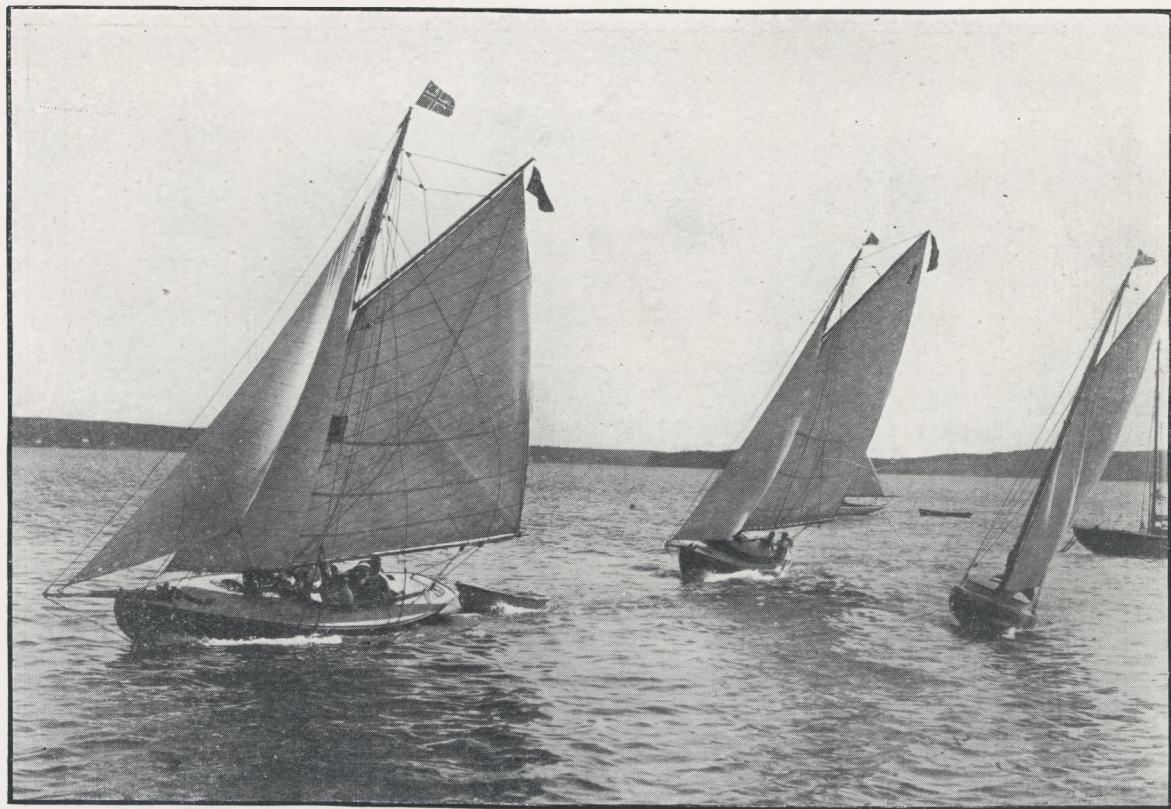
MELVILLE ISLAND, N. W. A.



HIGH DIVING AT THE WAEGWOLTIC



SITE OF NEW TERMINAL, PIERS OCCUPYING 1½ MILES OF WATERFRONT



YACHTING, HALIFAX HARBOR



CRAGG BROS., LIMITED
Corner George and Barrington Streets
THE CUTLERY HOUSE OF HALIFAX



SWANS IN PUBLIC GARDENS



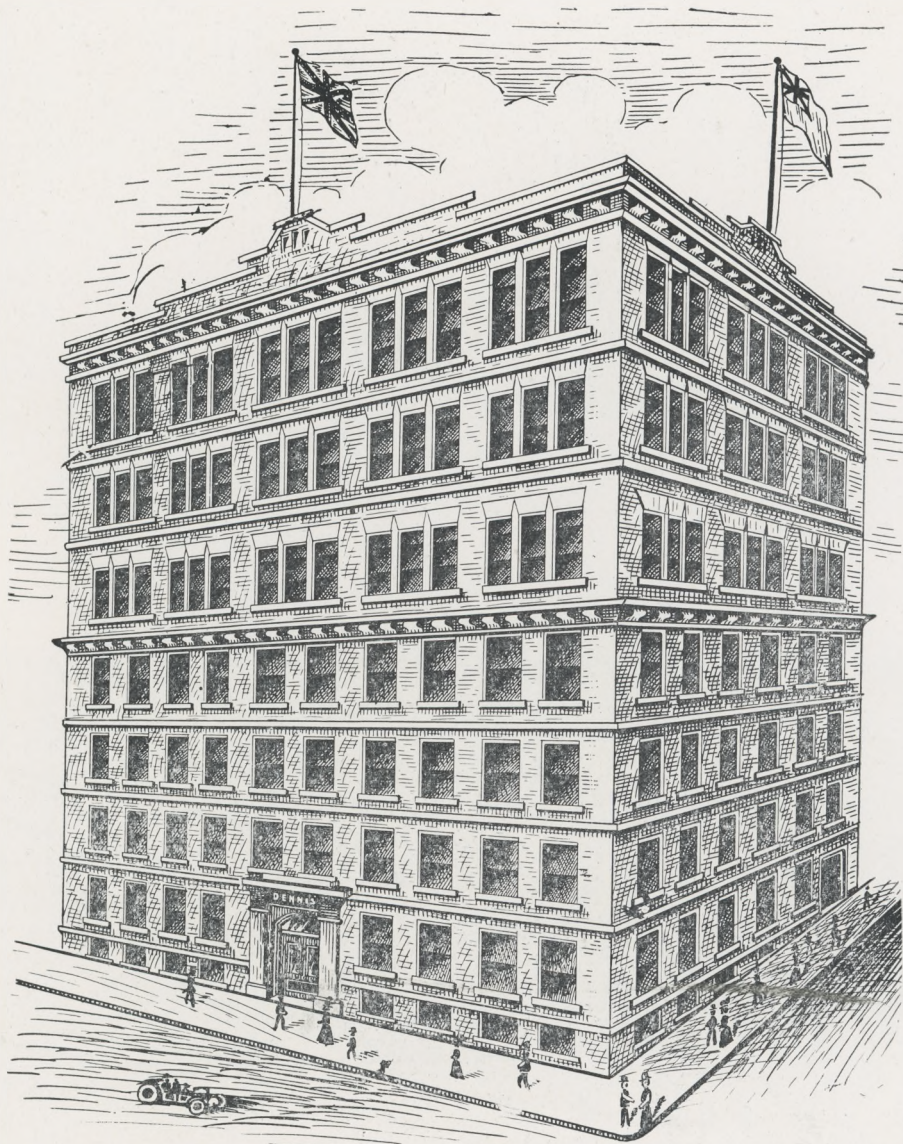
THE NEW CLOTHING PREMISES OF W. F. PAGE
Corner George and Barrington Streets



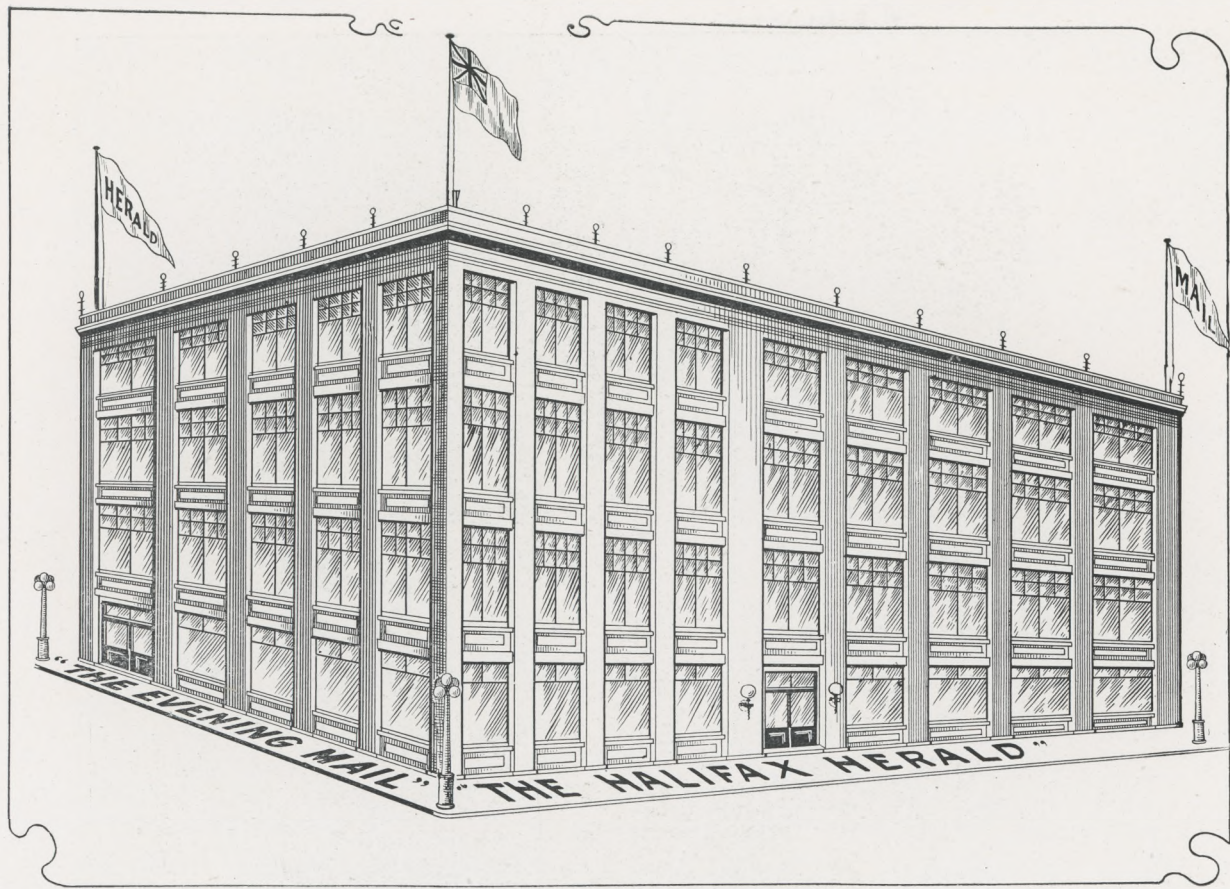
IN SIR SANDFORD FLEMING PARK, N. W. A.



YACHTS CREA AND YOULA R. N. S. Y. S



THE DENNIS BUILDING
Corner George and Granville Streets



THE HERALD BUILDING

Corner Argyle and Sackville Streets

The New Home of The Herald and The Mail, the upper floors of which will be occupied by McAlpine Publishing Co., Ltd., and Switzer Engraving Co., Ltd.



J. & M. MURPHY
Wholesale Dry Goods
Corner Duke and Hollis Streets



PANORAMIC VIEW OF HALIFAX FROM THE CITADEL.

From the ramparts of the Citadel the tourist obtains a comprehensive view of the City, and the magnificent proportions of the harbor appear to excellent advantage. Here the freighters of a nation's commerce might ride in safety, protected by the frowning guns of the Citadel and the fortifications on George's and MacNab's Islands—guardians of the harbor's mouth. Away to the right, at the entrance to the harbor, is Point Pleasant Park; while to the left the harbor broadens into Bedford Basin, a beautiful sheet of water. On the opposite side of the harbor is the suburban town of Dartmouth.



COW BAY SURF BEACH, HALIFAX, N. S.

An ideal spot for a day's outing—only nine miles from the City, good roads with picturesque scenery all the way. The combination of the Beach and Natural Park adjoining cannot be equalled in America.



FIRING ROYAL SALUTE FROM CITADEL, HALIFAX



OFFICE OF THE DIRECT CABLE COMPANY

48 BEDFORD ROW

In Direct Communication with Europe. The only Transatlantic Cable Landing at Halifax



RESIDENCE OF A. F. MACKINTOSH, PLEASANT STREET



RELIEVING GUARD IN WELLINGTON BARRACKS



S. S. Heathcote

S. S. Cape Breton
S. S. Bonavista

S. S. Earl Grey
S. S. Morien

HALIFAX GRAVING DOCK

Length, 560 feet ; Width, 79 feet ; Width of Entrance, 85 feet ; Depth of Water, 30 feet.

To be immediately extended to meet future requirements.

Vessels docked, painted and repaired expeditiously.

J. W. BROOKFIELD, Manager.



ON THE NORTHWEST ARM



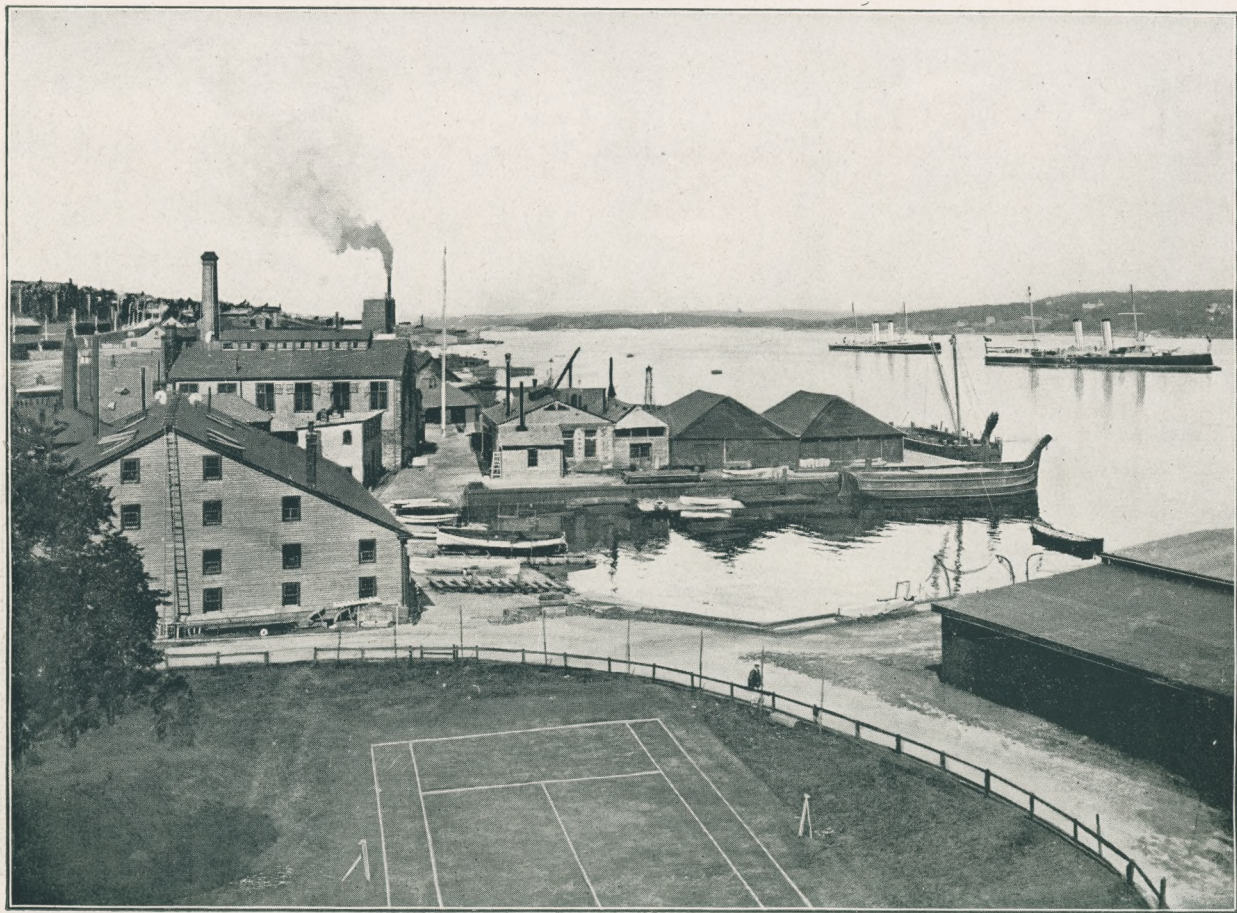
REVIEW ON THE NORTH COMMON



MEN-OF-WAR AT DOCKYARD



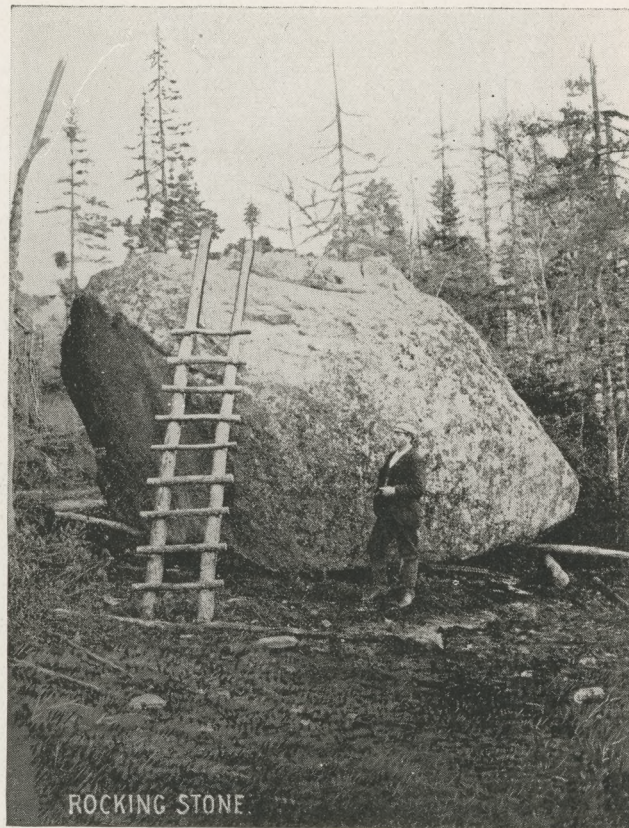
RESIDENCE ON YOUNG AVENUE
Built entirely of Nova Scotian Marble



NAVAL DOCKYARD, HALIFAX, N. S.



FLORAL TRIBUTE



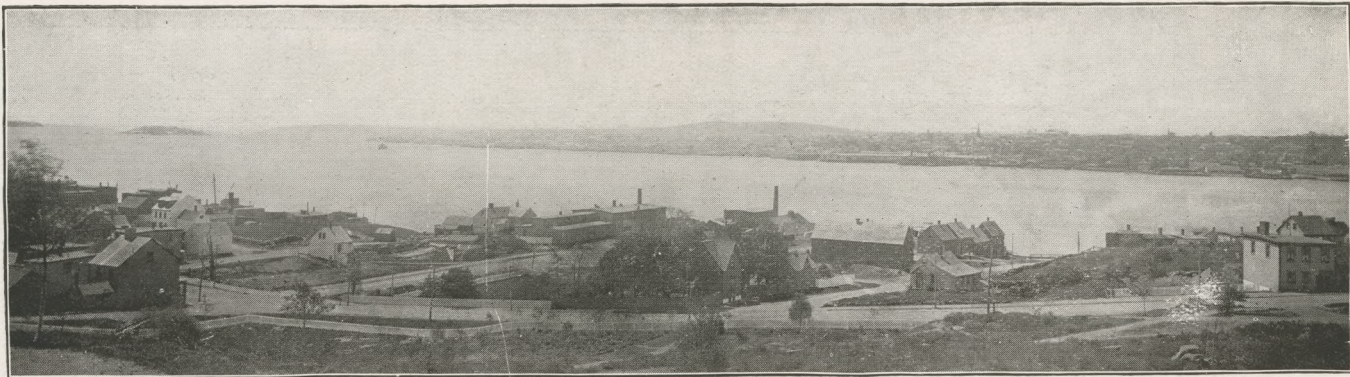
ROCKING STONE

ROCKING STONE, NEAR HALIFAX, N.

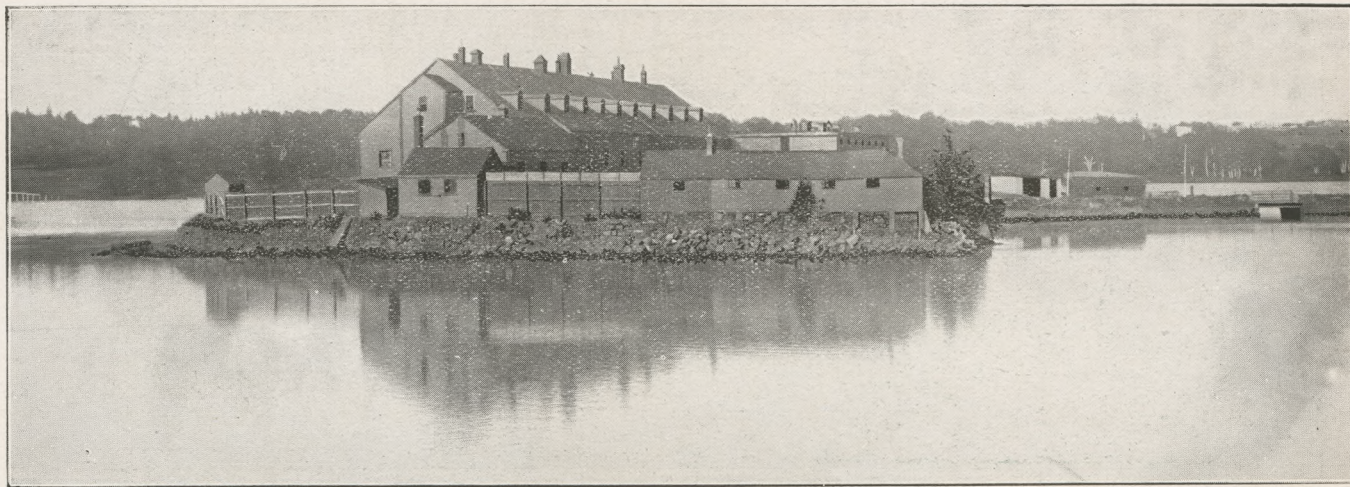


VOLUNTEER MONUMENT

Erected in Honor of the Heroes who Fell in South Africa



HALIFAX HARBOR—FROM DARTMOUTH



MELVILLE ISLAND, NORTHWEST ARM



TROOPS DRILLING ON HALIFAX COMMON



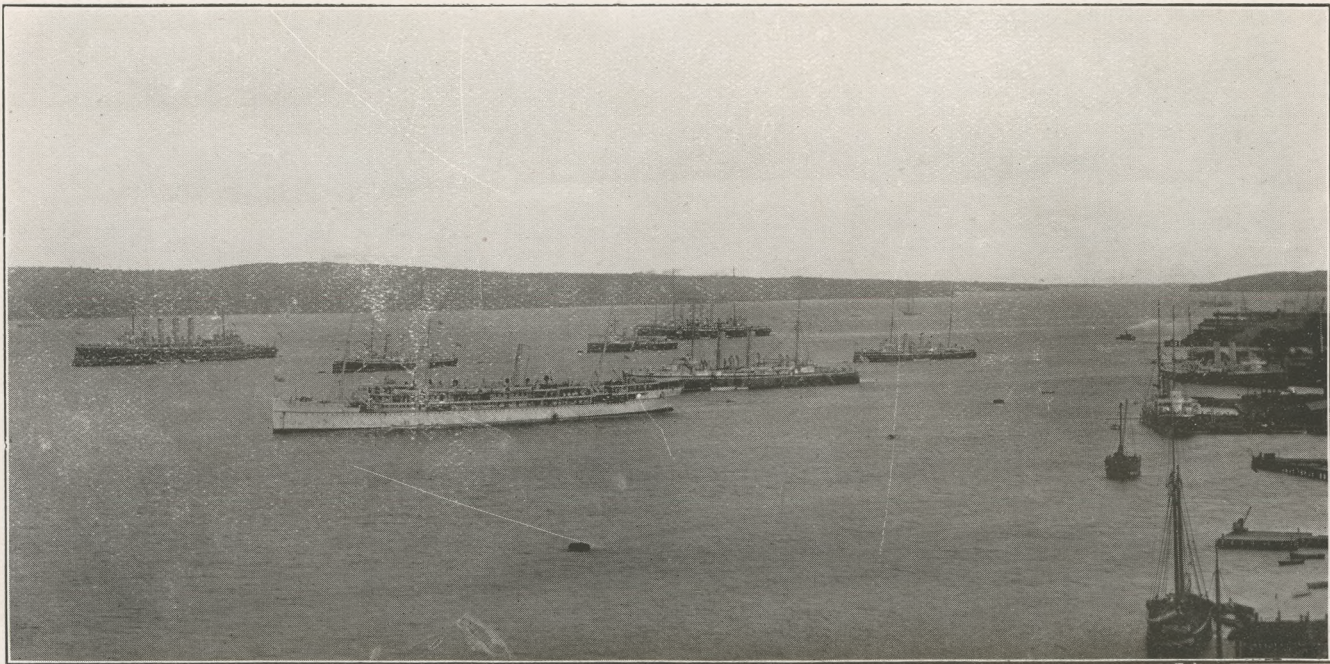
THE ARMORY, HALIFAX, N. S.



Halifax Study
1901

Torpedo Boats
1901

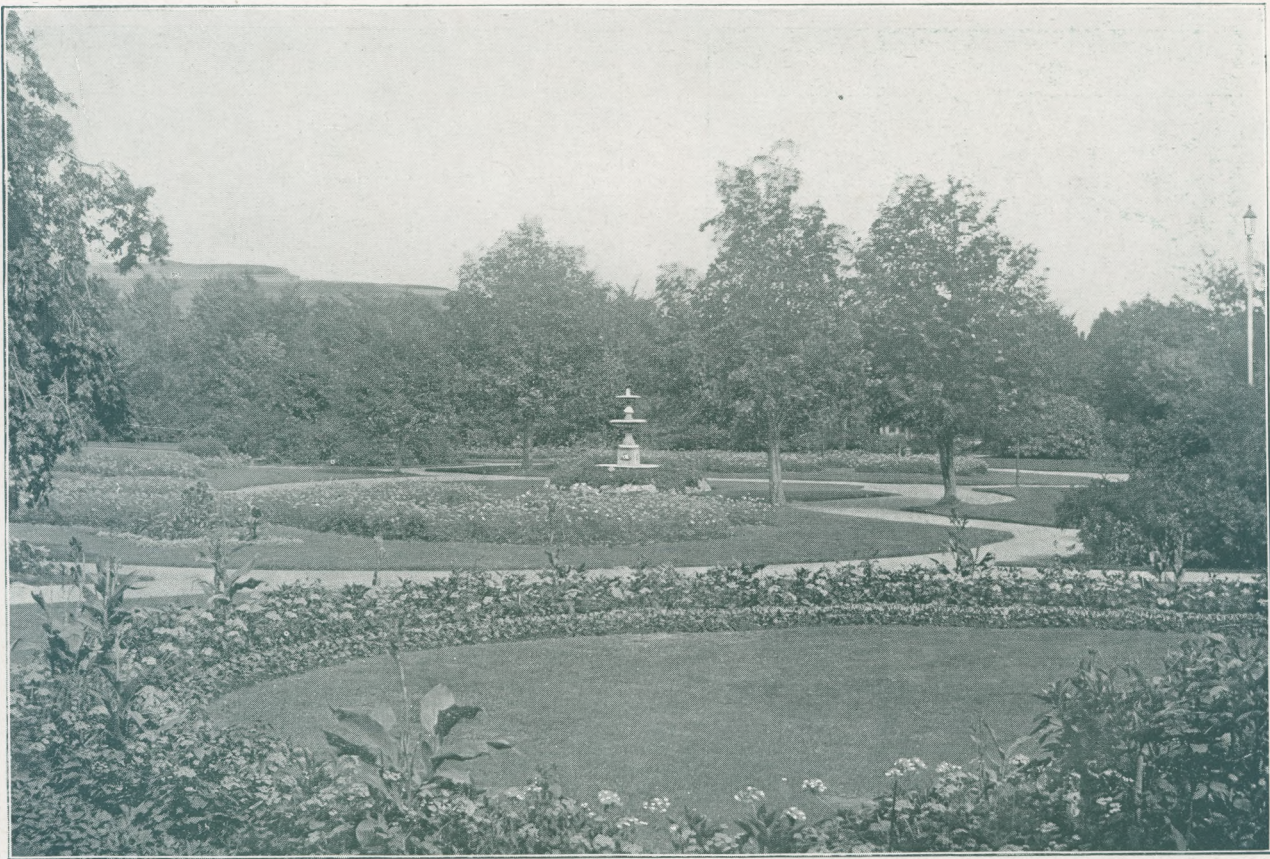
TORPEDO BOATS AT ANCHOR IN HALIFAX HARBOR



FLEET OF WAR VESSELS AT ANCHOR
Showing the magnificent proportions of Halifax Harbor



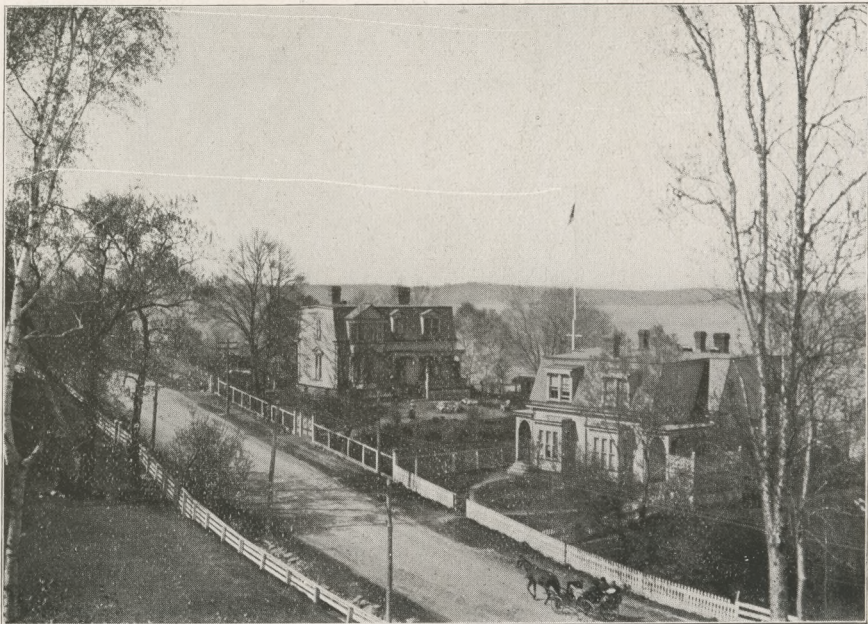
SCENE IN POINT PLEASANT PARK



ONE OF THE MOST BEAUTIFUL, PUBLIC GARDENS ON THE CONTINENT



PURCELL'S COVE, NEAR HALIFAX



ROCKINGHAM
Suburb of Halifax, on Bedford Basin



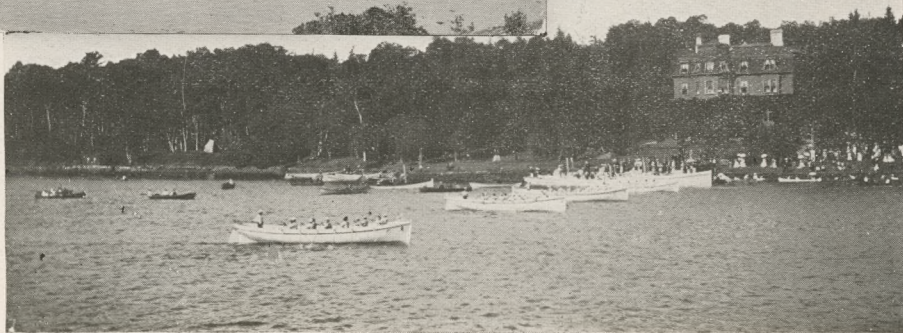
PRINCE'S LODGE
Suburb of Halifax, on Bedford Basin



BREEZY SPOTS AT HALIFAX
Point Pleasant Park



YACHTING ON HALIFAX HARBOR



REGATTA DAY, NORTHWEST ARM



NORTHWEST ARM ROWING CLUB



AMID A LUXURIANCE OF FOLIAGE
Band Stand, Public Gardens



INDIAN CAMP AT BEDFORD, NEAR HALIFAX



OLD CANAL, NEAR HALIFAX



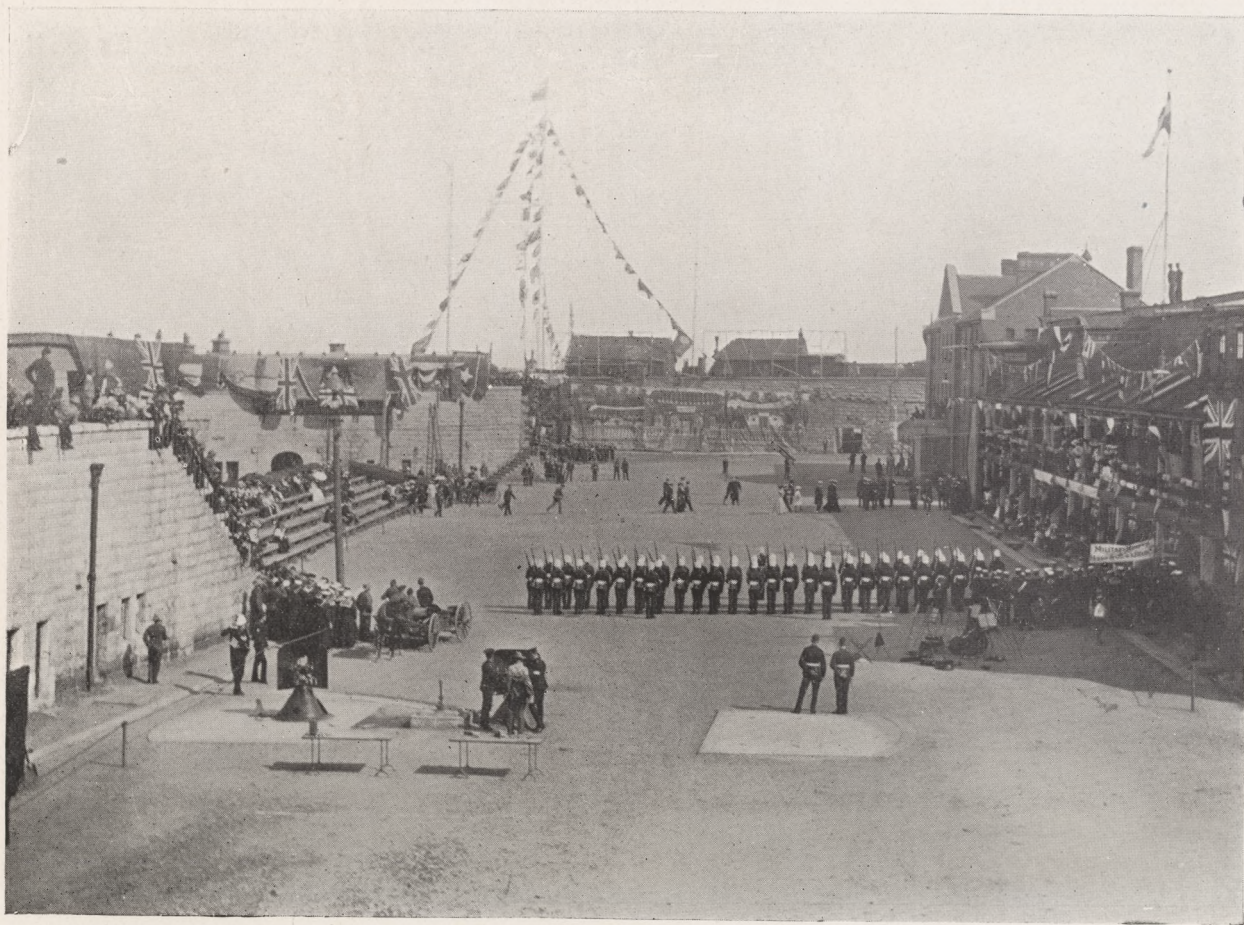
ENTRANCE TO CITADEL, OVER DRAWBRIDGE



VIEW OF HALIFAX HARBOR
Showing Dockyard in the foreground, Fleet of War



LOOKING FROM I. R. C. STATION
Vessels at Anchor, and Dartmouth in the Distance



TOURNAMENT IN CITADEL



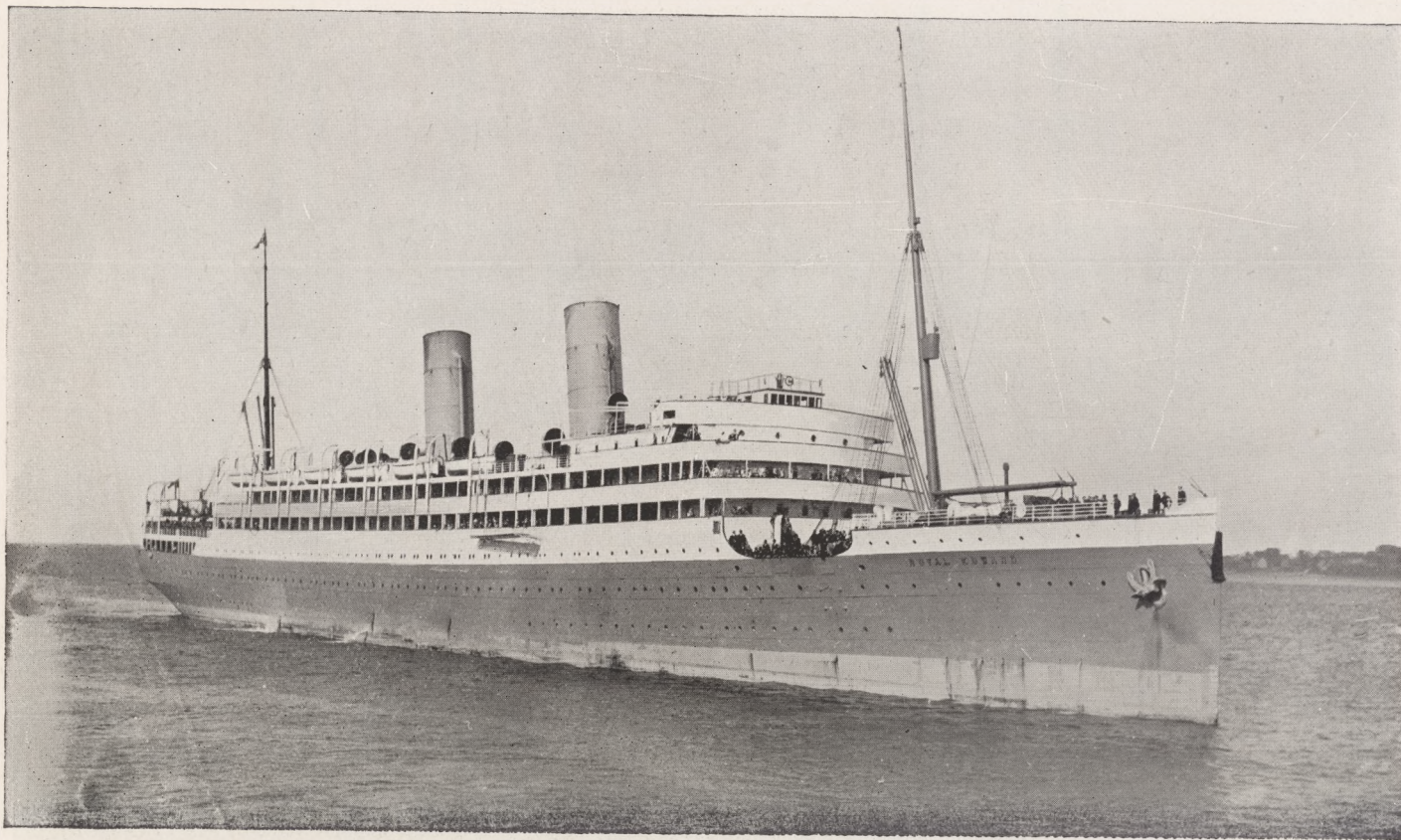
PAY DAY ON THE WAR-SHIPS



FIELD-GUN'S CREW IN THE DOCKYARD



N. & M. SMITH'S WHARF
Showing what the Fishing Industry Means to Halifax



R. M. S. "ROYAL EDWARD" ENTERING HALIFAX HARBOR

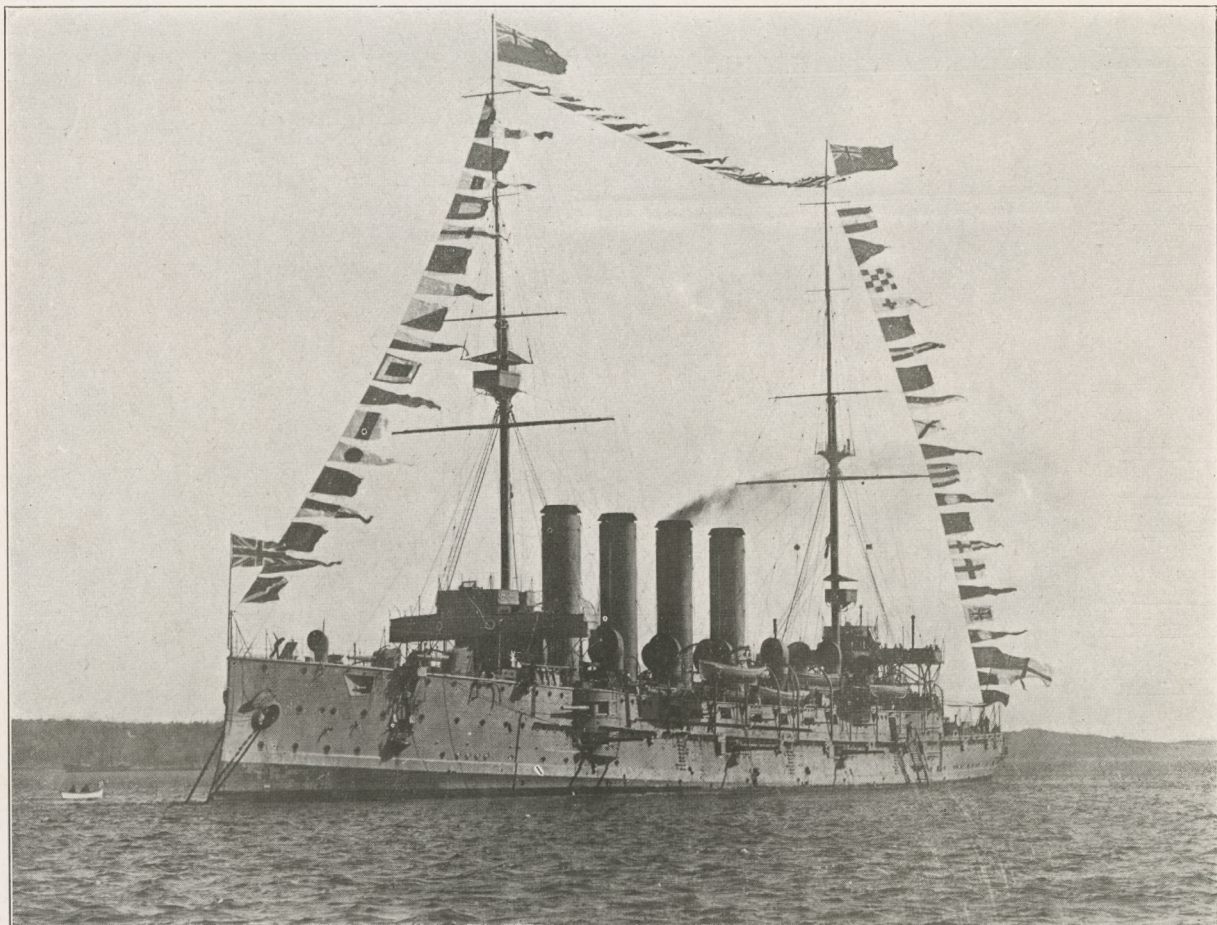
Flagship Canadian Northern Steamships, Limited, holder Canadian Atlantic Record between Great Britain and Halifax



ONE OF THE FISHING VESSELS OF THE MARITIME FISH CORPORATION, LTD., ENTERING HALIFAX HARBOR



HALIFAX HOTEL, HOLLIS STREET



THE FIRST CRUISER OF THE CANADIAN NAVY
H. M. C. S. "Niobe" as she looked just after she dropped anchor in Halifax Harbor



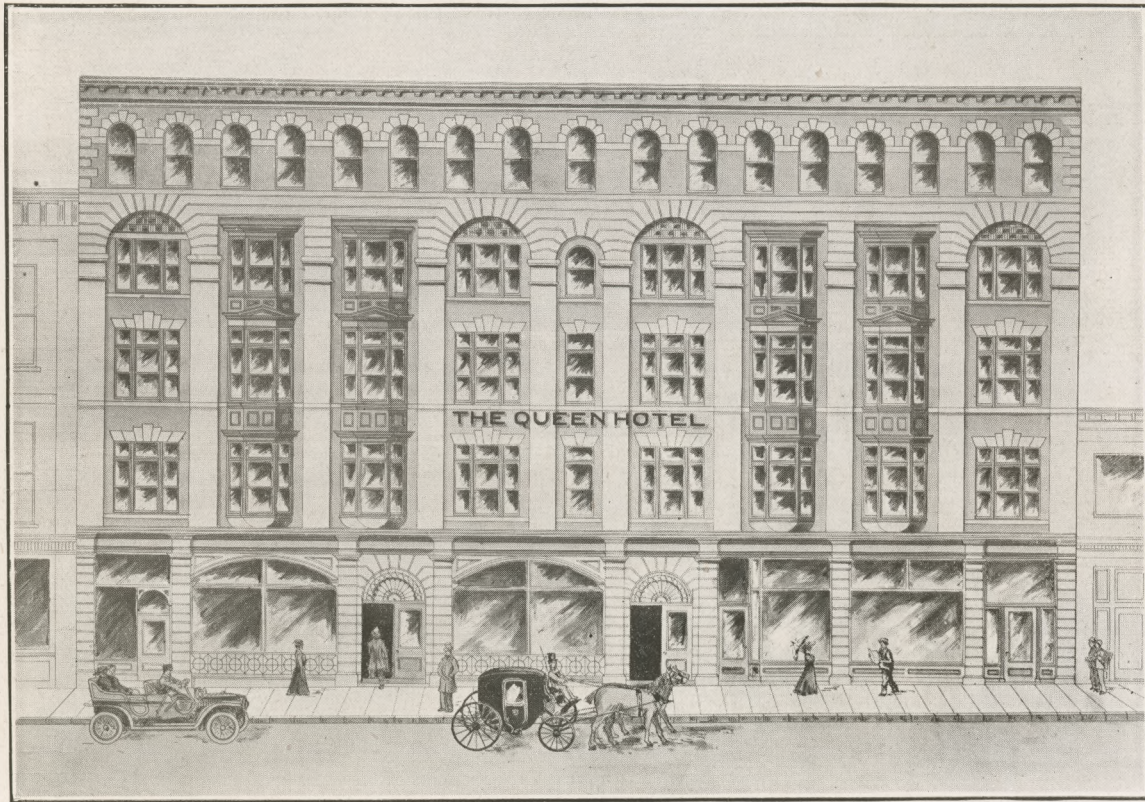
REGIMENT ON PARADE



Direct Connection
with
Prince Edward Island

"OCEAN LIMITED"
between
Montreal, Quebec, St. John, Halifax
Intercolonial Railway

Direct Connection
with
The Sydneys



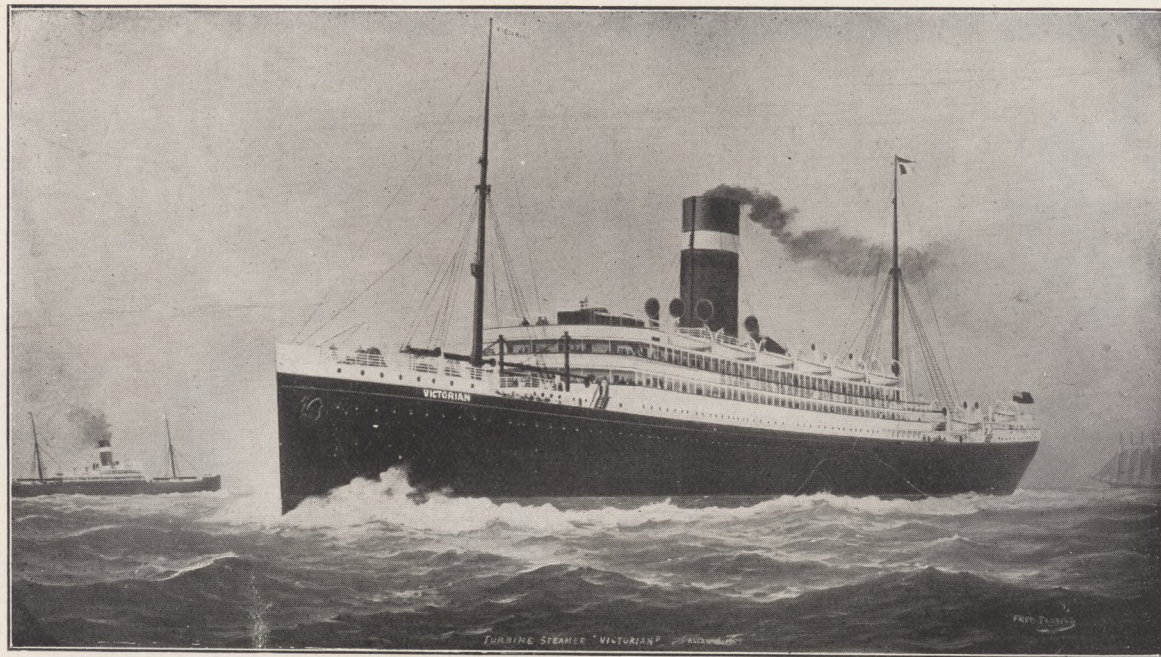
QUEEN HOTEL, HOLLIS STREET



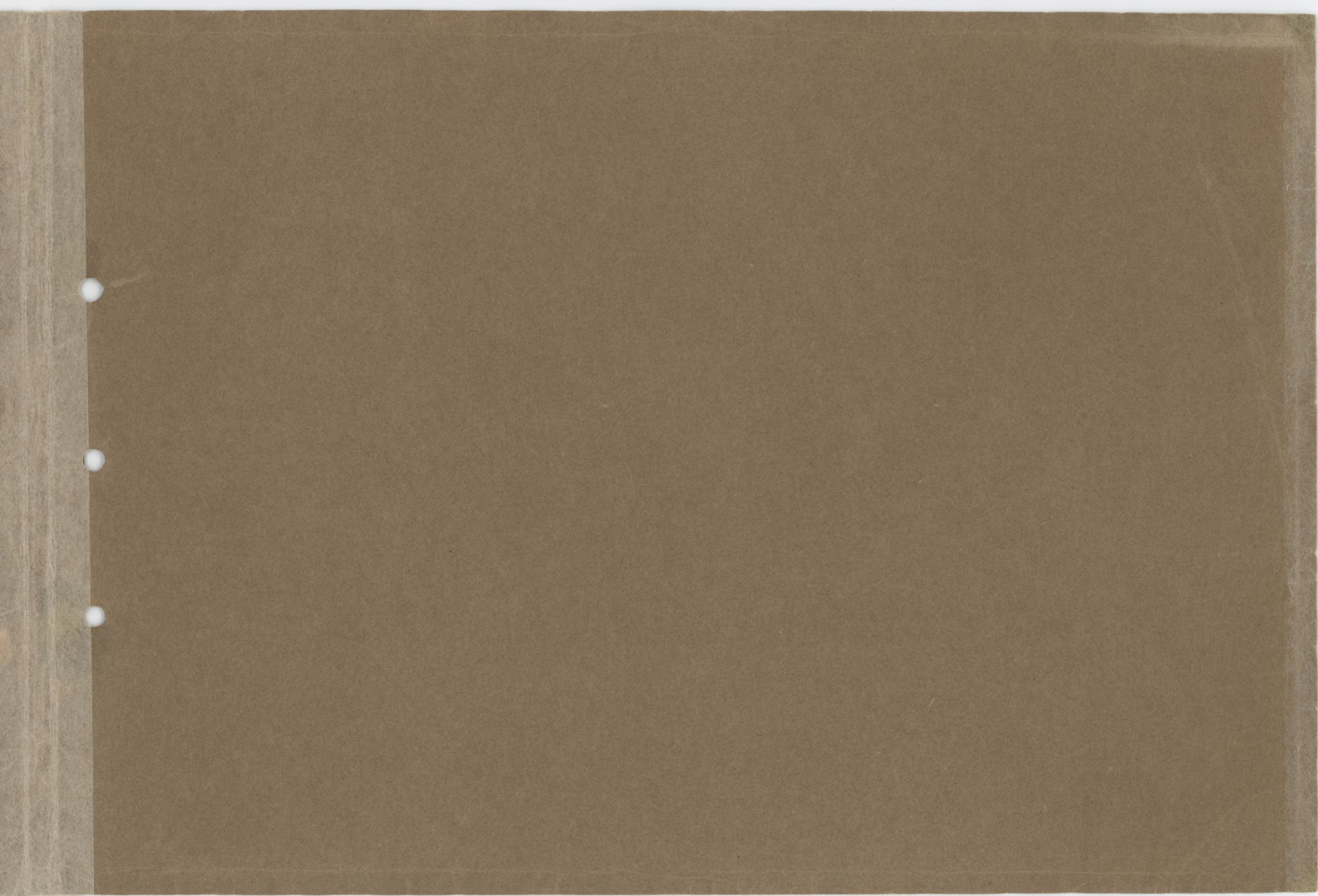
HOME OF THE WAEGWOLTIC CLUB, NORTHWEST ARM
Viewed from two points, showing just a glimpse of the Club House through the trees

020/5/89

800-



R. M. S. "VICTORIAN" (12,000 TONS) ENTERING HALIFAX HARBOR
The First Transatlantic Turbine Steamship
ALLAN LINE ROYAL MAIL STEAMSHIP COMPANY



Zbiory Graficzne

Biblioteka
Główna
UMK Toruń

A. 3. 281