

VICTORIA & ALBERT MUSEUM

VICTORIAN &
EDWARDIAN
DECORATIVE
ARTS



HER MAJESTY'S STATIONERY OFFICE

PRICE 2s. 0d. NET.

SMALL PICTURE BOOK No. 34.
First published October 1952.
Sold at the Victoria & Albert Museum,
South Kensington, and by Her Majesty's
Stationery Office at the addresses given
on page 3 of the cover. Crown copyright
reserved. Printed in Great Britain by
W. S. Cowell Ltd, Butter Market,
Ipswich.

N. Wadley.

VICTORIA & ALBERT MUSEUM

VICTORIAN
AND EDWARDIAN
DECORATIVE
ARTS

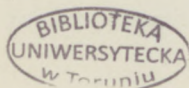
LONDON
HER MAJESTY'S STATIONERY OFFICE
1952

NOTE

This picture-book has been issued in conjunction with the Exhibition of Victorian and Edwardian Decorative Arts held in 1952 to commemorate the centenary of the foundation of the 'Museum of Ornamental Art', the original ancestor of the Victoria and Albert Museum.

All the objects illustrated survive, and have been newly photographed for the purpose of this publication.

1461842



D2 6122

INTRODUCTION

AFTER having been out of fashion for the past forty years, Victorian furniture and furnishings are now receiving the attention of the initiated. This new-found interest is mainly directed to those quaint and bizarre examples which seem by exaggeration to epitomize what we think of as 'Victorianism'. This picture-book, however, is not concerned with the outlandish and the retrospectively picturesque, nor, to any extent, with the routine everyday productions of the period. It concentrates instead on the work of those original designers who sought to determine the taste of the Victorian and Edwardian age. The objects depicted must not, therefore, be regarded as mere curiosities, nor as typical specimens of the period. All were in advance of popular taste, many were the result of a conscious revolt against it, and all can claim some solid merit as the work of serious designers.

It would be wrong to regard these pioneers as working in entire isolation from public demand, or as exercising no influence on the standards of mass-production. The widespread and revolutionary influence of A. W. N. Pugin and William Morris has long been generally recognized, but it can equally be claimed that the aspect of every home in the land has ultimately been affected not by them only, but also by the conventionalized arabesques of Owen Jones, the Anglo-Japanese taste represented here by Bruce Talbert's wallpaper and E. W. Godwin's table, the sophisticated naïveté of Voysey's birds, and even the 'Art Nouveau' extravagances of Charles Rennie Mackintosh. Each of these designers lived to see their highly personal—and originally derided—style become the basis for a

popular fashion, so that even today there is hardly a tea-room or cinema in the country in which the furnishings do not owe something to them.

The illustrations cannot pretend to include the work of every remarkable Victorian and Edwardian designer. In several important categories it has not been possible to trace any surviving examples: thus the carpets and jewellery of Sir Matthew Digby Wyatt, who was the first Slade Professor at Cambridge, the furniture of C. L. Eastlake and Norman Shaw, and the early rugs of Sir Frank Brangwyn, R.A., have had to be omitted. Other original designers such as J. D. Sedding, G. F. Bodley, Selwyn Image, and W. R. Lethaby have had to be left out for lack of space, and for the same reason it has not been practicable to illustrate A. W. N. Pugin's metal-work, or Bruce Talbert's furniture.

One or two of the objects illustrated may be ugly, but many are certainly beautiful, and all can undoubtedly claim the right to be remembered and preserved as sincere and original expressions of the astonishing variety and vitality that characterized the seventy-three years which they cover.

P.F.



1 Group of 'Summerly's Art Manufactures' about 1847



2 Early Victorian pottery



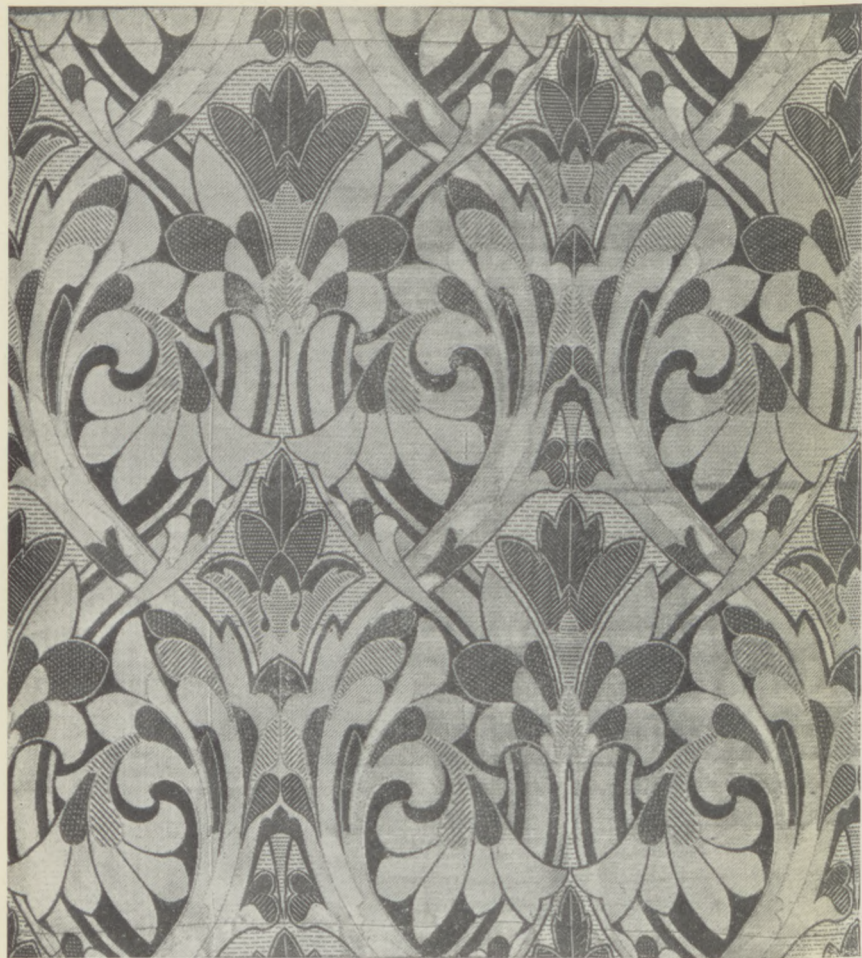
3 Early Victorian glass



4 Cabinet designed by A. W. N. Pugin, 1851



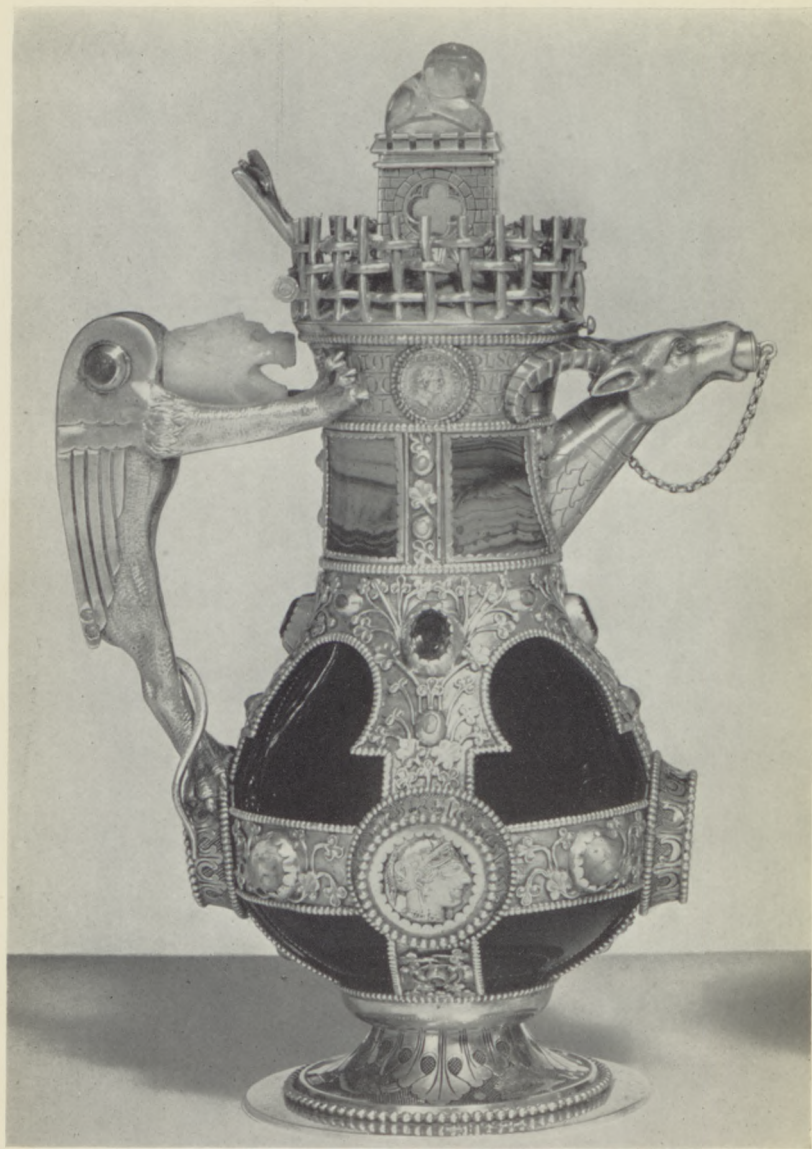
5 Stove designed by Alfred Stevens about 1852



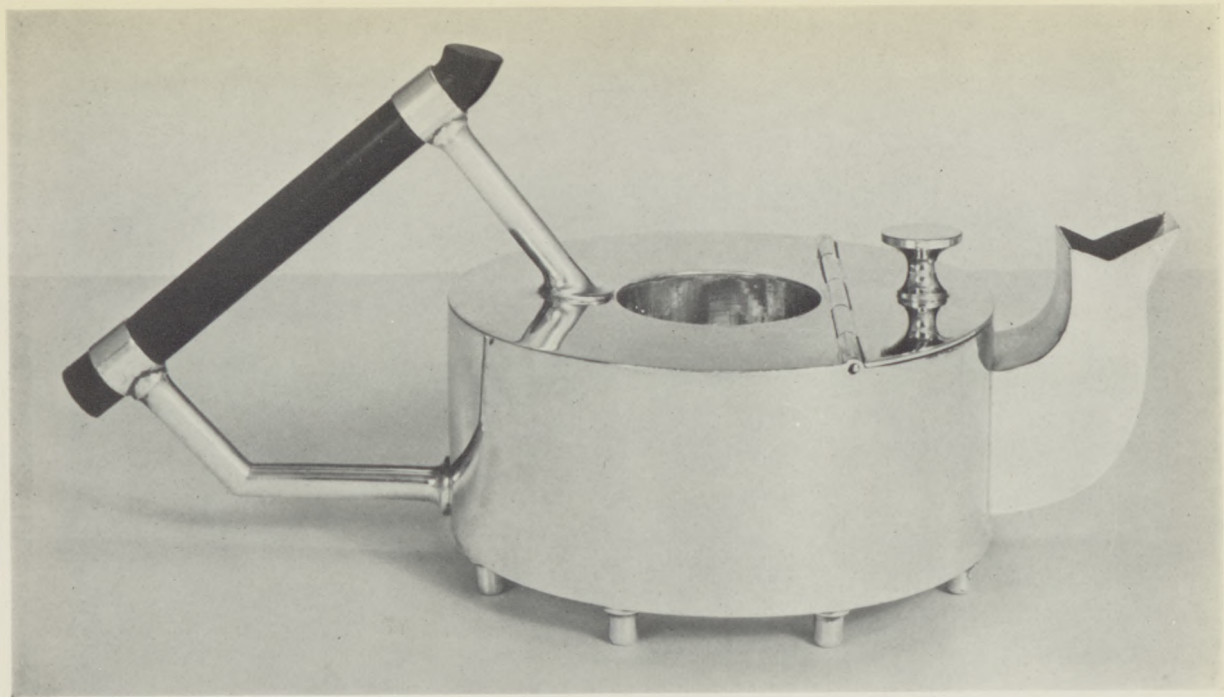
6 Silk tissue designed by Owen Jones about 1870



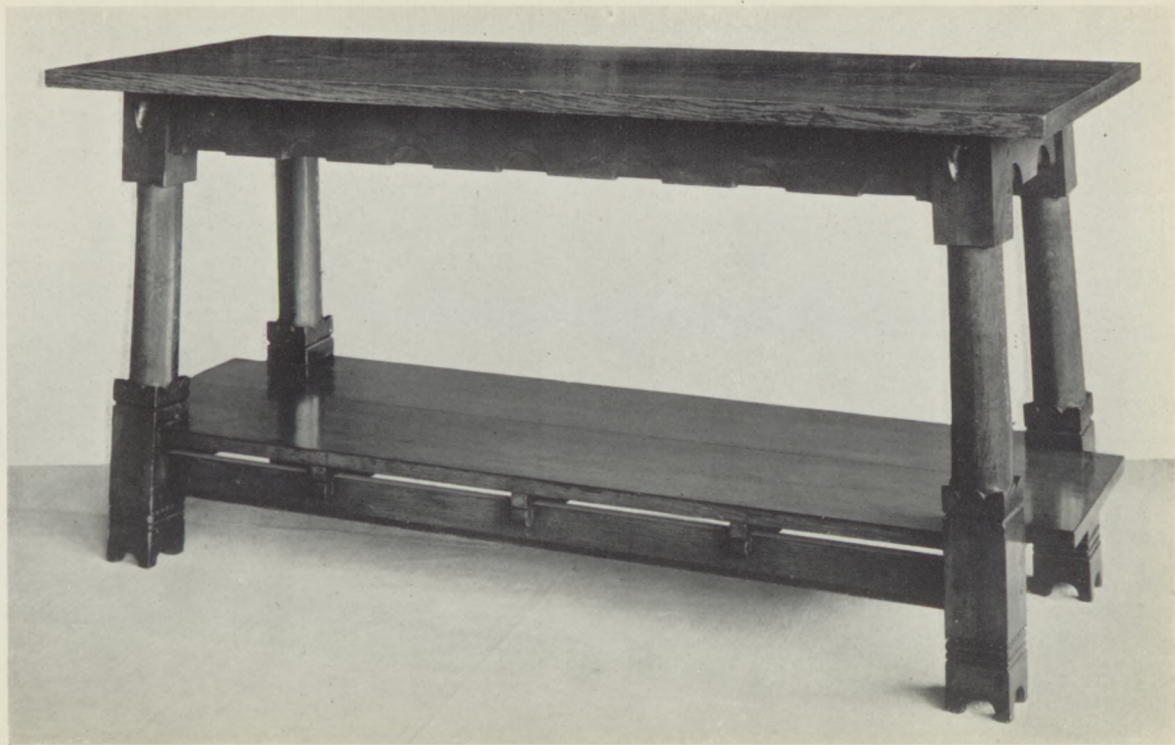
7 Wallpaper frieze designed by Bruce J. Talbert, 1877



8 Decanter designed by William Burges, 1866



9 Teapot designed by Christopher Dresser about 1880



10 Table designed by Philip Webb about 1870



11 Wardrobe probably designed by Philip Webb,
and painted by Sir E. Burne-Jones, 1858



12 Wallpaper designed by William Morris, 1876



13 Printed cotton designed by William Morris about 1892

BIBLIOTEKA
UNIWERSYTECKA
w Toruniu



14 Tapestry panel 'Flora' designed by Sir E. Burne-Jones
 and William Morris, 1885



15 Pottery designed by William De Morgan, 1882-98



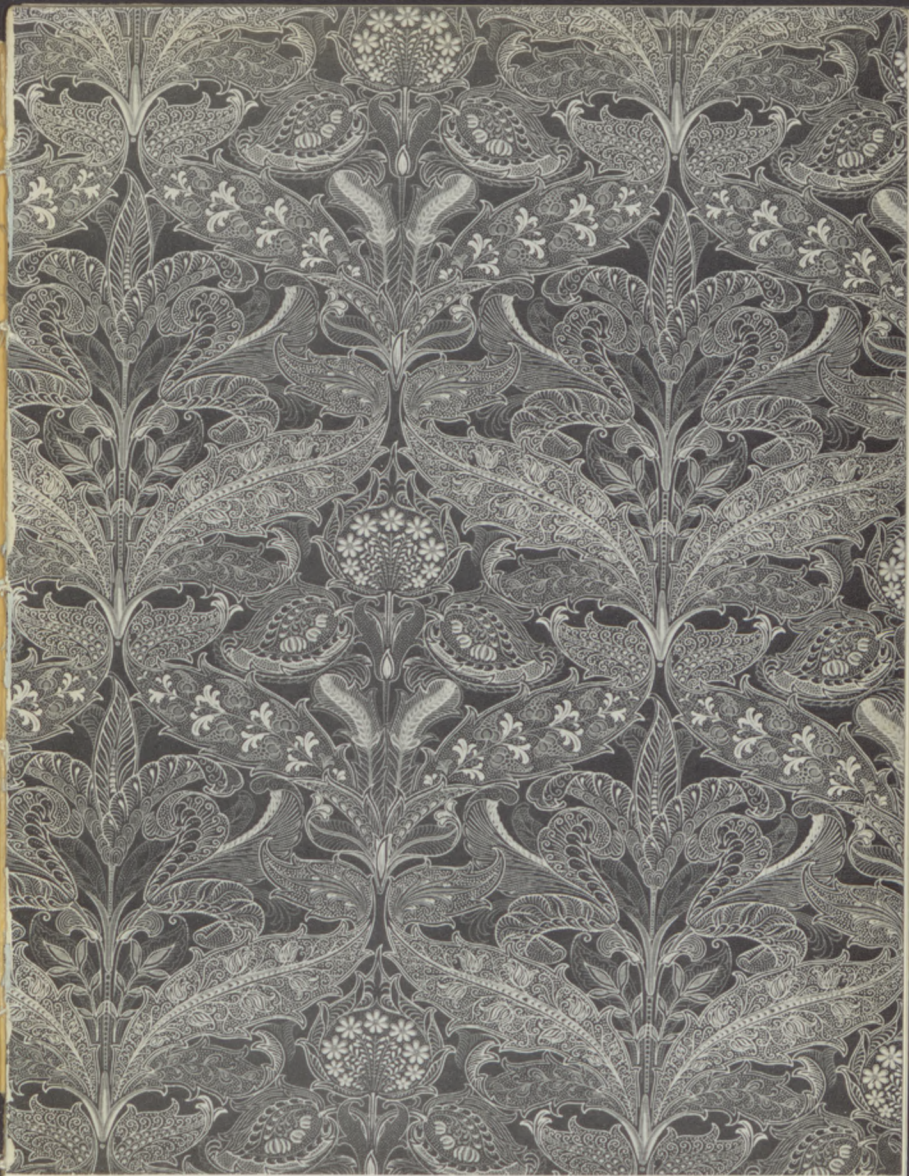
16 Late Victorian and Edwardian pottery



17 Pottery designed and made by the Martin Brothers, 1874-1903



18 Furniture designed by E. W. Godwin, 1868-85



21 Machine-printed cotton designed by Lewis F. Day, 1898



22 Woven fabric designed by C. F. A. Voysey, 1899



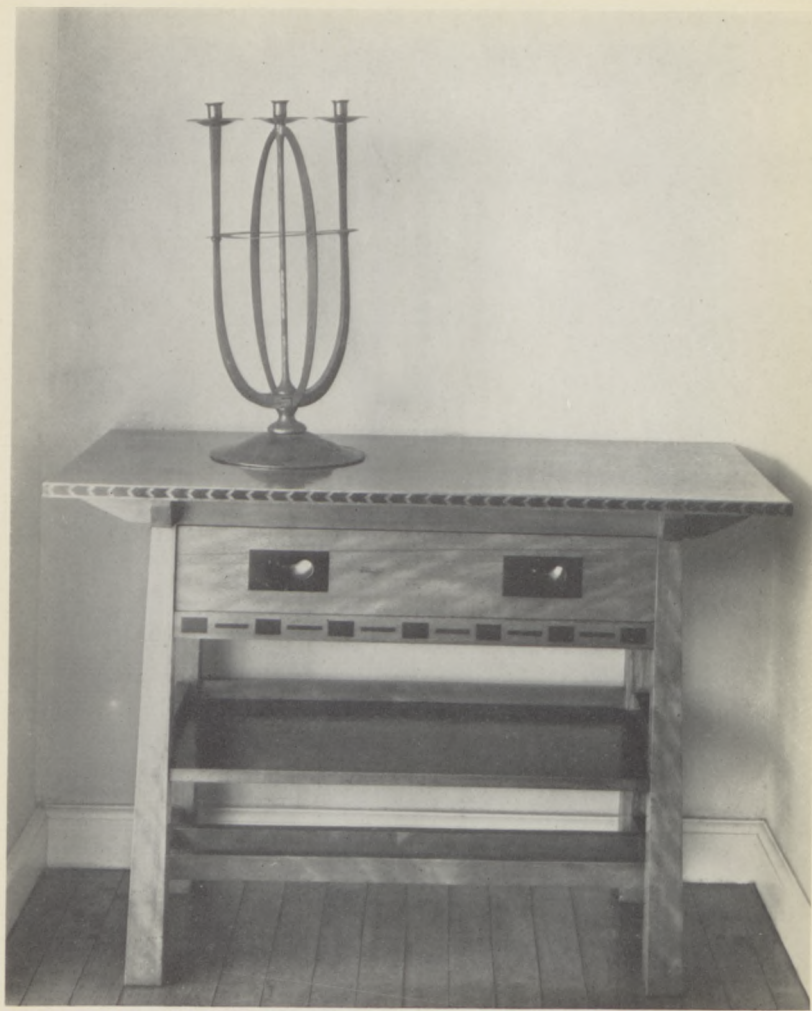
23 Desk, chair and carpet designed by C. F. A. Voysey about 1896



24 Furniture designed by Charles Rennie Mackintosh, 1897



25 (above) Cushion cover designed by Jessie Newbery about 1900
(below) Mirror frame designed by Margaret and Frances Macdonald, 1896



26 Hall table and candlestick designed by George Walton, 1887 and 1908



27 Embroidered curtain and child's chair designed by M. H. Baillie-Scott, 1901



28 Late Victorian and Edwardian glass



29 Late Victorian and Edwardian jewellery



30 (above) Teapot designed by W. A. S. Benson about 1900
(below) Chafing dish designed by Henry Wilson about 1906



31 Child's chair designed by Ambrose Heal, 1901



32 Cabinet designed by Ernest Gimson about 1910

NOTES

1. Group of 'Summerly's Art Manufactures' about 1847.
 - Wine Tray, papier mâché inlaid with gold, mother-of-pearl and ivory. Designed by Richard Redgrave (1804-88) and made by Jennens and Bettridge. L. 2 ft. 4½ in. W. 1 ft. 2½ in. 32-1865
 - Teapot, white glazed earthenware. Part of a service designed by 'Felix Summerly' (Henry Cole) (1802-82) for the Society of Arts Competition, 1846. Made by Minton & Co. H. 6 in. W. 5½ in. 2741-1901
 - The 'Flax' paper-knife, gilt metal and carved ivory. The handle designed by John Bell (1811-95), the blade made and fitted by Joseph Rodgers and Sons, Sheffield. L. 10½ in. W. 1 in. 447-1865
 - Water Carafe, glass enamelled and gilt. Designed by Richard Redgrave. H. 10¼ in. W. 5¼ in. 4503-1901
 - Christening cup, silver embossed and chased. Designed by Richard Redgrave and made by Harry Emanuel. H. 4⅞ in. W. 2⅞ in. 371-1865
2. Early Victorian Pottery.
 - Plate, painted in the 'Limoges' style by Thomas Bott at the Worcester Royal Porcelain Co.; 1867. Diam. 10⅞ in. In the possession of the makers.
 - Dish, painted by Emile Lessore at Wedgwoods; 1861. Diam. 15 in. 542-1894
 - Covered vase, made by Copelands; 1862. H. 10½ in. L. 17⅞ in. W. 8⅞ in. 8023-1862
 - Vase, designed by Alfred Stevens (1817-75) for Mintons; 1864. H. 16⅞ in. Diam. 18⅞ in. 184-1864
3. Early Victorian Glass.
 - Vase. Painted by Thomas Bott at Richardsons, Stourbridge; about 1851. H. 17⅞ in. Diam. 6⅞ in. In the possession of Benjamin Richardson, Esq.
 - Decanter, with cut decoration. Made by Richardsons, Stourbridge; about 1851. H. 14⅞ in. Diam. 5 in. In the possession of Mrs. E. Worrall.
 - Covered vase. Made by Isaac Barnes, Birmingham; about 1870. H. 9½ in. Diam. 2⅞ in. Given by the makers to the Birmingham City Museum and Art Gallery.
 - Jug, with engraved decoration. Made by James Green, London. Bought at the Great Exhibition, 1851. H. 13¼ in. Diam. 6¼ in. 4453-1901
4. Cabinet of carved and painted oak with wrought brass panels and fittings. Designed by A. W. N. Pugin (1812-52) and made by J. G. Crace. Exhibited at the Great Exhibition, 1851. H. 8 ft. W. 10 ft. D. 2 ft. 25-1852
5. Stove of cast bronze and brass, with panels of glazed earthenware. Designed by Alfred Stevens. Made by H. E. Hoole and Co., Sheffield, about 1852. H. 4 ft. 2 in. W. 2 ft. 4 in. D. 3 ft. 4030-1852
6. Silk tissue. Designed by Owen Jones (1809-74), and made by Benjamin Warner, about 1870. H. 1 ft. 5 in. W. 1 ft. 9 in. T.94a-1930

7. Wallpaper frieze designed by Bruce J. Talbert (1838-81). Made by Jeffrey and Co., 1877. H. 2 ft. 2 in. W. 1 ft. 9½ in. E.1855-1934
8. Decanter, silver mounted glass bottle set with precious stones and antique coins. Designed by William Burges (1827-81) and made by Richard A. Green, 1866. H. 11 in. W. 7 in. In the possession of Mrs. A. M. H. Westland.
9. Teapot, c.p.n.s. with ebony handle. Designed by Christopher Dresser (1834-1904) about 1880, and made by James Dixon and Sons, Sheffield. H. 4½ in. L. 9¾ in. W. 4¾ in. In the possession of the makers.
10. Oak table. Designed by Philip Webb (1831-1915), about 1870. H. 2 ft. 5 in. L. 5 ft. 5 in. W. 1 ft. 11½ in. W.45-1926
11. Wardrobe, painted and gilt. Probably designed by Philip Webb. The door painted by Sir Edward Burne-Jones (1833-98) with subjects from 'The Prioress's Tale' and with flowers on the sides painted by William Morris (1834-96); 1858. H. 4 ft. 3 in. W. 4 ft. 1 in. D. 1 ft. 4 in. In the possession of the Ashmolean Museum, Oxford.
12. Wallpaper, 'Pimpernel', designed by William Morris and made by Jeffrey and Co.; 1876. H. 2 ft. 5 in. W. 1 ft. 10½ in. E.497-1919
13. Printed cotton, 'Tulip and Willow', designed by William Morris and printed by Morris and Co., at Merton Abbey about 1889. H. 3 ft. W. 2 ft. 6 in. Circ. 89-1933
14. Tapestry panel, 'Flora'. The figure designed by Sir Edward Burne-Jones, the background by William Morris. Woven by Morris and Co., at Merton Abbey, 1885. H. 10 ft. W. 7 ft. 5 in. In the possession of the Whitworth Art Gallery, Manchester.
15. Pottery designed by William De Morgan.
 Covered vase, lustre-painted. Made at Fulham, 1888-98. H. 11¾ in. Diam. 8¾ in. C.413-1919
 Dish, lustre painted, probably at Merton Abbey 1882-8. Diam. 14½ in. 832-1905
 Vase, painted in 'Persian' colours. Made at Merton Abbey, 1887 or earlier. H. 12¾ in. Diam. 11¾ in. 407-1887
16. Late Victorian and Edwardian Pottery.
 Vase, parian porcelain, decorated in 'pâte-sur-pâte' by M. L. Solon for Mintons, 1873. H. 10¼ in. L. 8 in. W. 4¼ in. 573a-1877
 Covered jar, painted in lustre by Richard Joyce for Pilkingtons, about 1909. H. 4¾ in. Diam. 5 in. In the possession of the Manchester City Art Galleries.
 Wilkins at the Della Robbia Pottery, Birkenhead, 1899. H. 15¼ in. Diam.
 Vase, with sgraffito decoration by Charles Collis and painted by Liza 5¾ in. In the possession of the Williamson Art Gallery, Birkenhead.
 Jug, saltglaze stoneware, decorated by George Tinworth for Doultons, Lambeth, 1872. H. 9½ in. Diam. 5¾ in. 348-1874

17. Saltglazed stoneware designed and made by the Martin Brothers.
 Tankard. Made by R. Wallace Martin at Fulham, about 1874. H. 8½ in.
 Diam. 4¼ in. 3769-1901
 Vase. Made at Southall, 1886. H. 8½ in. Diam. 5½ in. C.1154-1917
 Jug. Made at Southall, 1900. H. 8¾ in. Diam. 6¾ in. C.493-1919
 Vase. Made at Southall, 1903. H. 10 in. Diam. 7½ in. C.468-1919
18. Furniture designed by E. W. Godwin (1838-86).
 Coffee Table, painted or ebonized oak. Made by William Watt, 1874.
 H. 2 ft. 3 in. W. 1 ft. 4 in. In the possession of the City Art Gallery,
 Bristol.
 Chair, oak. Made by William Watt, about 1885. H. 3 ft. 6 in. W. 3 ft.
 2 in. In the possession of Elizabeth, Lady Kilbracken.
19. Printed cotton designed by A. H. Mackmurdo (1851-1942). Printed by
 Simpson and Godlee, Manchester, for the Century Guild, about 1884.
 H. 3 ft. W. 2 ft. 9 in. In the possession of the William Morris Gallery,
 Walthamstow.
20. Nursery Wallpaper, 'The Sleeping Beauty' designed by Walter Crane
 (1845-1915). Made by Jeffrey and Co., about 1875. H. 2 ft. 6 in.
 W. 1 ft. 10 in. Circ. 566-1931
21. Machine-printed cotton designed by Lewis F. Day (1845-1910). Made by
 Turnbull and Stockdale, 1898. H. 2 ft. 5 in. W. 2 ft. In the possession of the
 makers.
22. Woven fabric, silk and wool, designed by C. F. A. Voysey (1857-1941)
 and made by Alexander Morton and Co., 1899. H. 2 ft. 5 in. W. 1 ft. 10½ in.
 In the possession of C. Cowles Voysey, Esq.
23. Group of furniture designed by C. F. A. Voysey.
 Oak Desk, with brass hinge made by W. H. Tingey, 1896. H. 5 ft. 6 in.
 W. 2 ft. 9 in. D. 2 ft. 10 in.
 Oak Chair made by Story and Co., 1899. H. 4 ft. 4 in. W. 1 ft. 5 in.
 Machine-woven Axminster carpet, 'Green Pastures', made by Tomkinson
 and Adam, Kidderminster, 1896. W. 3 ft. 9 in. L. 4 ft. 7 in.
 The furniture in the possession of Mrs. J. Bottard, the carpet in the
 possession of the makers.
24. Chair and Table, oak, designed by Charles Rennie Mackintosh (1868-1928)
 for the Glasgow School of Art, 1897. Chair, H. 4 ft. 6½ in. W. 1 ft. 7 in.
 Table, H. 2 ft. 6½ in. W. 2 ft. 2 in. In the possession of the School of Art.
25. Cushion Cover, linen appliqué on linen embroidered with coloured silks.
 Designed and worked by Jessie Newbery (b. 1864), about 1900. H. 1 ft.
 10½ in. W. 2 ft. 1½ in. In the possession of Mrs. M. N. Sturrock.
 Mirror frame, 'Honesty', in pure tin. Designed and made by Margaret
 and Frances Macdonald, 1896. H. 2 ft. 5 in. W. 2 ft. 4 in. In the possession
 of the Glasgow Art Gallery.

- 30
26. Hall Table, birchwood, inlaid with ebony, 1908. H. 2 ft. 4 in. L. 3 ft. D. 1 ft. 4 in., and Candlestick, steel, 1887. H. 1 ft. 6 in. Designed by George Walton (1867-1933). In the possession of Sir Ronald Davison.
27. Bed Curtain, appliqué of silk on felt, embroidered in coloured silks. Designed by M. H. Baillie-Scott (1865-1945). H. 2 ft. 11½ in. W. 1 ft. 3½ in. In the possession of Mrs. Lister Wallis.
 Child's Chair, oak with inlaid decoration and leather seat. Designed by M. H. Baillie-Scott and made by J. P. White, Bedford, about 1901. H. 3 ft. 4¼ in. W. 1 ft. 9½ in. In the possession of Sir Andrew MacTaggart.
28. Late Victorian and Edwardian Glass.
 Cameo vase, decorated by C. Northwood for Stevens & William, 1884. H. 8¼ in. Diam. 4¾ in. In the possession of the makers.
 Vase, made by James Powell & Sons; about 1900. H. 8¾ in. Diam. 4½ in. In the possession of P. G. Ledster, Esq.
 Decanter, decorated by William Fritsche at Thomas Webb & Sons; probably about 1905. H. 13¾ in. Diam. 4¾ in. In the possession of the makers.
 Vase, with trailed decoration. Made by A. Stanier for Stuart & Sons; about 1905. H. 15¼ in. Diam. 4½ in. In the possession of the makers.
29. Late Victorian and Edwardian Jewellery.
 Peacock brooch, gold, silver, chased and set with mother-of-pearl. Designed by C. R. Ashbee (1863-1942) and executed by the Guild of Handicrafts, about 1900. H. 5 in. W. 2¾ in. In the possession of Miss Jean Stewart.
 Pendant and buckle, silver with gold detail decorated with enamelling and set with semi-precious stones. Designed and executed by Henry Wilson (1864-1934), about 1905. Pendant, H. 6 in. Buckle, W. 7 in. In the possession of Miss Enid Morse.
 Pendant, silver decorated with enamelling and set with semi-precious stones and pearls. Designed and executed by Arthur Gaskin (1862-1929), 1906. H. 3½ in. In the possession of Mrs. J. V. Charlewood-Turner.
30. Teapot, electro-plate on brass with a cane handle. Designed by W. A. S. Benson (1854-1924) and executed by W. A. S. Benson and Co., about 1900. H. 5 in. Diam. 6½ in. In the possession of Capt. and Mrs. Michael Sumner.
 Chafing Dish, silver, hand raised with stamped and cast details. Designed by Henry Wilson; about 1906. H. 9¾ in. Diam. 11 in. In the possession of Guthlac Wilson, Esq.
31. Child's oak chair inlaid with ebony, mother-of-pearl and ivory. Designed by Ambrose Heal (b. 1872) and made by Heal and Son, 1901. H. 6 ft. 3 in. W. 3 ft. 9 in. D. 1 ft. 1 in. In the possession of Moray Angus, Esq.
32. Cabinet on stand, ebony inlaid with mother-of-pearl. Designed by Ernest Gimson (1864-1920), about 1910. H. 3 ft. 10½ in. W. 2 ft. 3 in. D. 1 ft. 2 in. In the possession of the City of Leicester Museums.



Biblioteka Główna UMK



300052090777

Copies of this book may be had from the Victoria & Albert Museum bookstall and from H.M. Stationery Office, York House, Kingsway, London, W.C.2; 423 Oxford St., London, W.1 (orders by post to be sent to P.O. Box 569, London, S.E.1); 13a Castle St., Edinburgh 2; 39 King St., Manchester 2; 2 Edmund St., Birmingham 3; Tower Lane, Bristol 1; 1 St. Andrew's Crescent, Cardiff; 80 Chichester St., Belfast, or through any bookseller. Obtainable in the United States of America from the British Information Services, 30 Rockefeller Plaza, New York 20, N.Y.

Price 2s. od. net By post 2s. 1½d. net.

Biblioteka Główna UMK



300052090777

Biblioteka

Główna

UMK Toruń

1461942

W. & EDWARDIAN DECORATIVE ARTS.